



**Cal-Van**  
TOOLS

2019 2020 2021 2022

**PRODUCT CATALOG**



A LEADER IN SPECIALTY TOOL  
DESIGN AND MANUFACTURING  
SINCE 1939

### **WHAT DOES CAL-VAN TOOLS REPRESENT?**

For nearly a century, Cal-Van Tools remains at the forefront of automotive specialty tool design and manufacturing. We continue to meet the needs of our customers, from professional technicians to the "do-it-yourself" individuals relying on our products to maintain pace as technology advances. We take pride in our ability to adapt and keep stride with every step the automotive industry takes while moving forward. Cal-Van Tools is continuously searching for the most effective methods to make jobs easy and save our customers money. Our innovations drive your profits.

### **WHAT IS THE WARRANTY?**

All products from Cal-Van Tools are engineered and manufactured to the highest standards of quality. Most of our tools are backed by a Limited Lifetime Warranty that guarantees tools from manufacturing and materials defects. Any product failing during intended use, while in the warrantable period, may be returned to the point of purchase for warranty. We have the option to repair or replace any tool found to be defective in workmanship or material.

Warranty does not apply to products worn beyond their serviceable life, have been abused, altered, or misused in any way. This warranty does not apply to wearable items, including but not limited to hone stones, razor blades, bulbs, files, snap rings, dies, rethreaders, drills, or cutting tools.

This warranty provides you specific legal rights, and you may also have other rights that can vary depending on your state laws.

### **WHAT ARE CAL-VAN'S CORE VALUES?**

Our integrity is based on four steadfast commitments in all we do:

**BE A SOLUTION PROVIDER** - Focus on the needs of our customers; today, tomorrow, and beyond.

**HONOR AND RESPECT** - Observe *The Golden Rule* by keeping commitments to our customers and partners. Keep in mind our success is measured by the success of our customers.

**ACT WITH INTEGRITY** - If it is wrong, do not do it. The easy way is not always the best path.

**CUSTOMER FOCUSED AND CUSTOMER DRIVEN** - We are accountable for the best interest of our customers, continually working to provide products meeting every want and need.



2019 2020 2021 2022

# PRODUCT CATALOG

# OUR CATALOG TABLE OF CONTENTS

2019 2020 2021

## 1 **ENGINE**

- Belt Tools
- Engine Cooling
- Subaru Specific Tools
- Cylinder and Piston Tools
- Installation Tools
- Thread Repair (Cylinder Head)

## 2 **FUEL, IGNITION, AND EMISSION SYSTEMS**

- Emission Tools
- Cylinder and Piston Tools

## 3 **ELECTRICAL AND DIAGNOSTIC**

- Diagnostic and Testing
- Radio and Antenna Tools
- Alternator Service
- Battery Maintenance

## 4 **PULLERS AND INSTALLERS**

- Bearing Pullers and Separators
- Driveline Tools
- Multi-Use Pullers
- Stud and Dowel Removal

## 5 **FILTERS, LUBRICATION, AND MAINTENANCE**

- Filter Pliers
- Strap Wrenches
- General Maintenance Tools
- Cup-Style Filter Wrenches
- Adjustable Filter Wrenches

## 6 **BRAKE TOOLS**

- Brake Caliper Tools
- Brake Bleeding
- Hones
- General Brake Tools

## 7 **TUBING FABRICATION**

- In-Line Flaring Tools
- Tubing Cutting and Fabrication
- Basic Flaring Tools

## 8 **SUSPENSION AND WHEEL**

- Suspension Tools
- Wheel and Hub
- Front End and Steering

## 9 **GENERAL HAND TOOLS**

- Ratcheting and Wrenches
- Pliers
- Damaged Fasteners
- General Use Tools
- Ratchet Accessories
- Torx Tools
- Inspection and Pick-Up Tools

## 10 **PAINT, BODY, SCRAPERS, AND KNIVES**

- Trim and Upholstery Tools
- Knives and Scrapers



Additional images and details can always be found on our website: [www.CAL-VANTOOLS.com](http://www.CAL-VANTOOLS.com)

# INNOVATION. DEPENDABILITY. QUALITY

**CHAPTER 1 - ENGINE****General Belt Tools**

|                                      | <i>Page</i> |
|--------------------------------------|-------------|
| 730 Magnetic Belt Holder             | 12          |
| 734 The Grabber Serpentine Belt Tool | 12          |
| 738 Serpentine Belt Tool             | 12          |
| 735 Euro Stretch Belt Tool           | 12          |
| 736 Stretch Belt Installation Tool   | 12          |
| 737 Subaru Stretch Belt Tool         | 12          |

**Cylinder and Piston Tools**

|  |    |
|--|----|
| 360 Engine Cylinder Hone 2" to 7" Capacity                 | 13 |
| 32300 Adjustable Cylinder Hone and Deglazer                | 13 |
| 641 Interchangeable, Ratcheting Piston Ring Compressor Set | 13 |

**Engine Cooling**

|   |    |
|---|----|
| 244TNZ 4-PC. Heater Hose Disconnect Set | 13 |
| 751 GM Thermostat Wrench                | 13 |
| 752 Variable Pin Spanner Wrench         | 14 |

**Installation Tools**

|  |    |
|--|----|
| 171 Ford 6.0L Diesel Head Bolt Adapter                                     | 14 |
| 195 Power Steering Pump Removal and Installation Kit                       | 14 |
| 386 Harmonic Balancer Puller   | 14 |
| 499 7.3 Ford Diesel Rear Main Seal and Sleeve Removal and Installation Kit | 14 |
| 980 Crankshaft Bolt Socket Set   | 15 |
| 38500 Master Harmonic Balancer and Puller Installer                        | 15 |
| 38700 Long Reach Harmonic Balancer and Pulley Installer                    | 15 |
| 38710 Ford EcoBoost Long Reach Harmonic Balancer Installer                 | 15 |
| 38800 Harmonic Balancer Kit  | 16 |
| 38000 Ratcheting Harmonic Balancer Puller                                  | 16 |
| 38100 Ford and Mazda Crankshaft Holder                                     | 16 |
| 38110 Ford Harmonic Balancer Holder  | 16 |

**Subaru Specific Tools**

|  |    |
|--|----|
| 754 3-in-1 Subaru Sprocket Tool          | 16 |
| 7541 Subaru Pulley and Sprocket Bolt Bit | 17 |
| 198 Subaru Crank Pulley Tool             | 17 |

**Thread Repair**

|  |    |
|--|----|
| 38900 Two Valve Ford Triton Spark Plug Thread Repair Kit | 17 |
| 39100 Ford Triton Spark Plug Extractor Kit               | 17 |
| 39200 Ford Triton Spark Plug Porcelain Extractor Kit     | 17 |
| 39300 Three Valve Ford Triton Insert Repair Kit          | 18 |
| 39500 Ford Triton Broken Spark Plug Extractor Kit        | 18 |

**CHAPTER 2 - FUEL, IGNITION, AND EMISSION SYSTEMS**

| <b>Emission Tools</b>                 |   | <i>Page</i> |
|---------------------------------------|---|-------------|
| 841                                   | 11-PC. Oxygen Sensor Socket Set                   | 18          |
| 841-11                                | Sensor Thread Chaser (M18 x 1.5)                  | 18          |
| 842                                   | 7-PC. Oxygen Sensor Socket Set                    | 19          |
| 843                                   | Oxygen Sensor Wrench                              | 19          |
| 844                                   | Combination 6-Pt. and 12-Pt. Oxygen Sensor Wrench | 19          |
| <b>Fuel and Ignition System Tools</b> |   |             |
| 64                                    | High Energy Ignition Tester                       | 19          |
| 65                                    | Noid Light Set                                    | 19          |
| 612                                   | Adjustable Spark Tester                           | 20          |
| 693                                   | Ignition Point Files                              | 20          |
| 253                                   | Fuel Tank Locking Ring Tool                       | 20          |
| 684                                   | Line Disconnect Tools                             | 20          |
| 683                                   | Master Line Disconnect Tool Set                   | 20          |
| 689                                   | Fuel Line Pliers                                  | 20          |

**CHAPTER 3 - ELECTRICAL AND DIAGNOSTIC**

| <b>Diagnostic and Testing</b> |                                     | <i>Page</i> |
|-------------------------------|-------------------------------------|-------------|
| 55000                         | 11-PC. Deutsch Terminal Service Kit | 21          |
| 55100                         | 6-PC. Deutsch Terminal Service Kit  | 21          |
| 55004                         | Open Barrel Crimping Pliers         | 21          |
| 55005                         | Terminal Crimping Pliers            | 21          |
| 611                           | 17-PC. Back Probe Kit               | 21          |
| 613                           | 20-PC. Back Probe Kit               | 21          |
| 69                            | Amp Alert                           | 22          |
| 70                            | Heavy Duty Circuit Tester           | 22          |
| 78                            | LCD Test Light                      | 22          |
| 81                            | Logic Light                         | 22          |
| 63                            | Window Tint Meter                   | 22          |
| 74                            | AmpHound                            | 22          |
| 72                            | AmpHound 2                          | 23          |
| 73                            | Ripple Quick Tester                 | 23          |
| 76                            | Relay Circuit Pro                   | 23          |
| 84                            | WiFi Borescope                      | 23          |

| <b>Alternator Service</b>      |   | <i>Page</i> |
|--------------------------------|---|-------------|
| 750                            | 22-PC. ADP (Alternator Coupler Pulley) Master Set | 24          |
| 756                            | 5-PC. ADP (Alternator Coupler Pulley) Bit Set     | 24          |
| <b>Radio and Antenna Tools</b> |   |             |
| 135                            | Ford Radio Removal Tool                           | 24          |
| 142                            | Antenna and Radio Tool Set                        | 24          |
| <b>Battery Maintenance</b>     |   |             |
| 549                            | Terminal Clamp Spreader                           | 24          |
| 553                            | Heavy Duty Battery Post and Terminal Cleaner      | 24          |

**CHAPTER 4 - PULLERS AND INSTALLERS**

| <b>Bearing Pullers and Separators</b> |  | <i>Page</i> |
|---------------------------------------|--|-------------|
| 503                                   | Bearing Splitter 4-¼" Capacity                           | 25          |
| 508                                   | Small Bearing Splitter                                   | 25          |
| 509                                   | Medium Bearing Splitter                                  | 25          |
| 511                                   | Large Bearing Splitter                                   | 25          |
| 501                                   | 7-ton Bar-Type Puller and Bearing Splitter               | 25          |
| 502                                   | 5-ton Bar-Type Puller and Bearing Splitter               | 25          |
| <b>Multi-Use Pullers</b>              |  |             |
| 956                                   | 9-Way Slide Hammer Pulley Set                            | 25          |
| 240                                   | 4" Adjustable Two-Jaw Puller with 4" Spread              | 25          |
| 941                                   | 3 ½" Adjustable Two-Jaw Puller with 6" Spread            | 25          |
| 942                                   | 5 ½" Adjustable Two-Jaw Puller with 7" Spread            | 25          |
| 134                                   | 3 ½" Two and Three-Jaw Combination Puller with 4" Spread | 26          |
| 951                                   | 3 ½" Two and Three-Jaw Combination Puller with 7" Spread | 26          |
| 952                                   | 5 ½" Two and Three-Jaw Combination Puller with 8" Spread | 26          |
| 187                                   | Steering Wheel Puller                                    | 26          |
| 192                                   | Pulley Puller  | 26          |
| 957                                   | Adjustable Three-Legged Puller with 5" Capacity          | 26          |
| 49700                                 | 14-PC. Light-Duty Slide Hammer                           | 26          |

| <b><i>Driveline Tools</i></b> |  | <i>Page</i> |
|-------------------------------|--|-------------|
| 905                           | Light Duty U-Joint Puller                    | 27          |
| 907                           | Intermediate U-Joint Puller                  | 27          |
| 199                           | Heavy Duty U-Joint Puller                    | 27          |
| 497                           | Heavy-Duty Yoke Puller                       | 27          |
| 18510                         | Bolt Retained Bearing Cup Installer          | 27          |
| 20200                         | Magnetic Bearing Cup Installer               | 27          |
| 20                            | Clutch Alignment Tool                        | 28          |
| 28                            | Pilot Bearing Puller with Slide Hammer       | 28          |
| 29                            | Blind Hole Bearing Puller                    | 28          |
| 31                            | Pilot Bearing Puller                         | 28          |
| 189                           | Harmonic Balancer Puller                     | 28          |
| 506                           | Adjustable Seal Driver                       | 28          |
| 49500                         | 13" Seal Puller with Slide Hammer            | 28          |
| 49600                         | 17" Heavy Duty Seal Puller with Slide Hammer | 29          |
| 91800                         | Rear Axle Bearing Puller Set                 | 29          |

***Stud and Dowel Removal***

|       |  |    |
|-------|--|----|
| 95200 | In-Line Dowel Pin Pullers                | 29 |
| 95300 | In-Line Dowel Pin Pullers                | 29 |
| 95400 | In-Line Dowel Pin Pullers                | 29 |
| 95500 | Stud Removal Sets                        | 29 |
| 95550 | Stud Removal Sets                        | 29 |
| 19    | Stud Remover                             | 30 |
| 95600 | SAE Stud Removal and Installation Set    | 30 |
| 95700 | Metric Stud Removal and Installation Set | 30 |

***CHAPTER 5 - FILTERS, LUBRICATION, AND MAINTENANCE***

| <b><i>Band Style Filter Wrenches</i></b> |  | <i>Page</i> |
|--|--|-------------|
| 967                                      | 4-in-1 Swivel Filter Wrench                    | 30          |
| 993                                      | Swivel Filter Wrench 2 3/8" to 2 7/8"          | 30          |
| 994                                      | Swivel Filter Wrench 2 7/8" to 3 1/4"          | 30          |
| 995                                      | Swivel Filter Wrench 3 7/16" to 3 3/4"         | 30          |
| 999                                      | Swivel Filter Wrench 4" to 4 3/8"              | 30          |
| 989                                      | Swivel Filter Wrench 4 15/16" to 4 3/4"        | 31          |
| 991                                      | XL Swivel Filter Wrench 4 15/16" to 4 3/4"     | 31          |
| 891                                      | Heavy Duty Filter Wrench 4 1/8" to 4 21/32"    | 31          |
| 892                                      | Heavy Duty Filter Wrenches 4 21/32" to 5 5/32" | 31          |
| 893                                      | Heavy Duty Filter Wrenches 5 5/32" to 5 21/32" | 31          |

|   | <i>Page</i> |
|---|-------------|
| <b><i>Oil Filter Pliers</i></b>                               |             |
| 291 Adjustable Truck and Tractor Filter Pliers                | 31          |
| 297 Filter Pliers 2 ¾" to 3 ¼"                                | 31          |
| 298 Filter Pliers 3 ⅜" to 3 ⅝"                                | 31          |
| 302 Adjustable Filter Pliers 2 ¼" to 5 ¾"                     | 31          |
| 29900 Adjustable Truck and Tractor Filter Pliers 3 ¾" to 7 ½" | 31          |
| 29200 Large and Small Filter Plier Set                        | 32          |
| <b><i>Cup-Style Filter Wrenches</i></b>                       |             |
| 785 Cup-Style Filter Wrench 65mm (2 9/16")                    | 32          |
| 788 Cup-Style Filter Wrench 74mm - 76mm (2 29/32" – 3")       | 32          |
| 789 Cup-Style Filter Wrench 76 mm (3")                        | 32          |
| 791 Cup-Style Filter Wrench 93mm (3 21/32")                   | 32          |
| <b><i>Strap-Style Filter Wrenches</i></b>                     |             |
| 803 Heavy-Duty Filter Strap Wrench                            | 32          |
| 814 All Size Filter Strap Wrench                              | 32          |
| <b><i>Adjustable Filter Wrenches and Sockets</i></b>          |             |
| 987 Heavy Duty Three-Legged Filter Wrench                     | 33          |
| 988 Three-Legged Filter Wrench                                | 33          |
| 996 Oil Filter Socket Set (27mm, 21mm, 36mm)                  | 33          |
| <b><i>General Maintenance Tools</i></b>                       |             |
| 610 Diesel Exhaust Fluid Tester                               | 33          |
| 38200 4-PC. Oil Pan Drain Plug Removal Kit                    | 33          |
| 38400 10-PC. Oil Pan Drain Plug Repair Kit                    | 33          |

**CHAPTER 6 - BRAKE TOOLS**

|  | <i>Page</i> |
|--|-------------|
| <b><i>Brake Caliper Tools</i></b>                          |             |
| 700 Universal Brake Pad Spreader                           | 34          |
| 702 Brake Pad Spreader                                     | 34          |
| 727 Universal Caliper Turn and Push Back Tool              | 34          |
| 722 Multi-Sided Caliper Piston Rewind Tool                 | 34          |
| 723 Combination 2-Pin and 3-Pin Caliper Piston Rewind Tool | 34          |
| 724 2-Pin and 3-Pin Caliper Piston Rewind Adapter Set      | 34          |
| 62 Brake Fluid Tester (DOT 4 Only)                         | 35          |
| 66 Brake Fluid Tester (DOT 3 / DOT 4 / DOT 5.1)            | 35          |



| <b>Hones</b> |  | <i>Page</i> |
|--------------|--|-------------|
| 762          | Sub-Compact Brake and Engine Hone ½" to 2 ¼"     | 35          |
| 357          | Brake and Engine Hone 1¼" to 3 ½"                | 35          |
| 358          | Brake and Engine Hone ¾" to 2 ½"                 | 35          |
| 362          | Adjustable Brake and Engine Hone ¾" to 2 ½"      | 36          |
| 33000        | Multi-Hone Set with Combined Capacity ¾" to 3 ½" | 36          |

**Brake Bleeding**

|       |                               |    |
|-------|-------------------------------|----|
| 855   | Brake Bleeder Tank            | 36 |
| 24700 | One Person Brake Bleeder Tool | 36 |
| 36700 | S-Cam Tool                    | 36 |
| 364   | Brake Spring Tool             | 37 |

**CHAPTER 7 - TUBING FABRICATION**

**In-Line Flaring Tools**

|     |                                 | <i>Page</i> |
|-----|---------------------------------|-------------|
| 165 | Master In-Line Flaring Tool Set | 37          |
| 166 | In Line Flaring Tool            | 37          |
| 154 | In-Line Flaring Tools           | 37          |
| 161 | In-Line Flaring Tools           | 37          |
| 164 | In-Line Flaring Tools           | 37          |
| 160 | Handheld Brake Flaring Tool     | 38          |

**Basic Flaring Tools**

|       |                                 |    |
|-------|---------------------------------|----|
| 153   | Metric Double Flaring Tool      | 38 |
| 163   | SAE Double Flaring Tool         | 38 |
| 82700 | Metric Bubble Flaring Tool Set  | 38 |
| 82800 | 12-PC. Metal Tubing Service Kit | 38 |
| 82900 | SAE and Metric Tube Flaring Kit | 39 |

**Tubing Cutting and Fabrication**

|       |   |    |
|-------|---|----|
| 151   | Mini Tube Cutter ⅛" to ⅝"                       | 39 |
| 159   | Mini-Mini Constant Pressure Tubing Cutter up ⅝" | 39 |
| 157   | Constant Pressure Tubing Cutter 3/16" to ⅞"     | 39 |
| 158   | Constant Pressure Tubing Cutter ⅛" to 1 ⅛"      | 39 |
| 169   | Double Deburr Tool                              | 39 |
| 758   | Heavy Duty Tubing Bender                        | 39 |
| 75902 | Tube Bend Mirror Adapters                       | 39 |

**CHAPTER 8 - SUSPENSION AND WHEEL****Suspension**

|   | <i>Page</i> |
|---|-------------|
| 91300 Floor Mounted Strut and Spring Compressor | 40          |
| 200 Torsion Bar Tool                            | 40          |
| 90200 Master Spring Compressor Set              | 41          |
| 513 Master MacPherson Strut Tool Set            | 41          |
| 512 MacPherson Strut Tool                       | 41          |
| 510 Coil Spring Compressor                      | 41          |
| 91000 Coil Spring Clamps                        | 41          |

**Front End and Steering**

|   |    |
|---|----|
| 197 Ball Joint Super Set                    | 41 |
| 196 Ball Joint Removal and Installation Kit | 42 |
| 185 Front End Service Kit                   | 42 |
| 182 Tie Rod End Tool                        | 42 |
| 184 Ball Joint Separator                    | 42 |
| 186 Pitman Arm Puller                       | 42 |
| 188 Outer Tie Rod Arm Puller                | 42 |
| 194 Tie Rod Arm Puller                      | 42 |
| 504 Bushing Driver Set                      | 43 |
| 946 Inner Tie Rod Removal Tool              | 43 |
| 947 Heavy-Duty Tie Rod Removal Tool         | 43 |

**Wheel and Hub**

|  |    |
|--|----|
| 839 6-PC. 4WD Locknut Socket Set                       | 43 |
| 966 8-PC. 6-Point Axle Nut Socket Set                  | 43 |
| 976 8-PC. 12-Point Axle Nut Socket Set                 | 44 |
| 90703 Dodge Hub Nut Socket                             | 44 |
| 977 Toyota Hub Nut Socket                              | 44 |
| 90700 Dodge and Ford Hub Removal Tool                  | 44 |
| 90701 Dodge Hub Removal Tool (Formerly 90300)          | 44 |
| 90702 Ford Hub Removal Tool Adapter for Use with 90701 | 45 |
| 904 Wheel Bearing Tool Set                             | 45 |
| 94800 Hub Puller                                       | 45 |
| 526 Flange-Type Axle and Hub Puller                    | 45 |
| 332 Wheel and Hub Resurfacing Kit                      | 45 |
| 75510 16-PC Master Wheel Locking Nut Key Set           | 45 |
| 16 Quick-Change Wheel Stud Cleaner Kit                 | 46 |

**CHAPTER 9 - GENERAL HAND TOOLS**

**Ratchet and Wrenches**

|   | <i>Page</i> |
|---|-------------|
| 906 Finger Bit Driver Variation                                     | 46          |
| 90620 Finger Bit Driver Merchandiser                                | 46          |
| 90630 Finger Bit Driver Merchandiser                                | 46          |
| 100 Master Finger Bit Driver Set                                    | 46          |
| 104-03 Finger Socket Driver 3-Pack                                  | 46          |
| 108-BLUE ¼" Mini Finger Ratchet                                     | 46          |
| 109-BLUE ⅜" Mini Finger Ratchet                                     | 46          |
| 450 Tight Access Drive Ratchets with ⅜" Drive Adapter               | 47          |
| 480 ½"-Drive Extendable Breaker Bar                                 | 47          |
| 668 Pistol-Grip, Multi-Angle, Ratcheting Screwdriver with LED Light | 47          |

**Ratchet Accessories**

|   |    |
|---|----|
| 482 90-Degree Gearless Angle Drive (¼")   | 47 |
| 483 90-Degree Gearless Angle Drive (⅜")   | 47 |
| 485 45-Degree Gearless Angle Drive (¼")   | 47 |
| 487 Driver Adapters                       | 47 |
| 488 Twin Spin Driver Converter (¼" to ⅜") | 48 |
| 489 Twin Spin Driver Converter (⅜" to ½") | 48 |
| 490 Versa-Drive 2-in-1 Adapters           | 48 |
| 48100 Master Ratchet Accessory Set        | 48 |

**Pliers**

|   |    |
|---|----|
| 47 Light Bulb Pliers                            | 48 |
| 52 Oetiker Clamp Pliers                         | 48 |
| 54 Indexing Push-Pin Pliers                     | 49 |
| 58 45-Degree Offset Universal Hose Clamp Pliers | 49 |
| 59 Universal Hose Clamp Pliers                  | 49 |
| 1016 12-PC. Snap Ring Plier Set                 | 49 |
| 48 Offset Snap Ring Pliers                      | 49 |
| 49 Snap Ring Pliers                             | 49 |
| 16000 Radiator Hose Pinch-Off Pliers            | 50 |
| 16500 Heavy Duty Pinch Off Pliers               | 50 |

**Torx Tools**

|   |    |
|---|----|
| 934 52-PC. Torx Bit Master Set                          | 50 |
| 933 36-PC. Torx Bit Set                                 | 50 |
| 932 12-PC. Torx Bit Set with Holder (T-10 through T-55) | 50 |
| 912 Extra-Long Torx Screwdriver Set                     | 51 |
| 917 Extra-Long Tamper-Proof Torx Screwdriver Set        | 51 |
| 935 5-PC. MorTorq Bits with Rail                        | 51 |

|  |   | <i>Page</i> |
|--|---|-------------|
| <b><i>Damaged Fasteners</i></b>            |   |             |
| 342  | Metric Stripped Hex Screw Removers                  | 51          |
| 343  | SAE Stripped Hex Screw Removers                     | 51          |
| 439  | 9-PC. Metric Stripped Hex Head Screw                | 51          |
| 440  | 8-PC. SAE Stripped Hex Head Screw                   | 52          |
| 438  | Spiral Screw Extractors                             | 52          |
| 441  | Tapered Screw Extractors                            | 52          |
| <b><i>Inspection and Pick Up Tools</i></b> |   |             |
| 21   | 9-3/4" 4-PC. Hook and Pick Set                      | 52          |
| 22   | 9-3/4" 6-PC. Hook and Pick Set                      | 52          |
| 23   | Telescoping Magnetic Pick-Up Tool, 16 lbs. Strength | 52          |
| 25   | Telescoping 2" Round Inspection Mirror              | 53          |
| 27   | Telescoping Inspection Mirror                       | 53          |
| 30   | Telescoping Magnetic Pick-Up Tool, 16 lbs. Strength | 53          |
| 32   | 2-3/8" Round Telescoping LED Inspection Mirror      | 53          |
| 33   | Magnetic Pick-Up Tool and LED Pen Light             | 53          |
| 35   | Rectangular LED Lighted Inspection Mirror           | 53          |
| 39   | O-Ring Hook and Seal Pick                           | 53          |
| 226  | Adjustable Magnetic Pick-Up Tool                    | 54          |
| 287  | Telescoping Magnetic Pick-Up Tool                   | 54          |
| 627  | Hook and Pick                                       | 54          |
| <b><i>General Tools</i></b>                |   |             |
| 119  | Magnetic Bit Rail                                   | 54          |
| 264  | Parts Cleaning Brush                                | 54          |
| 351  | All-Purpose Awl                                     | 54          |
| 353  | Denailer  | 54          |
| 764  | Exhaust Pipe Cutter                                 | 55          |
| 767  | Ratcheting Tubing and PVC Cutter                    | 55          |
| 878  | Ratcheting Chain Wrench                             | 55          |

**CHAPTER 10 - PAINT, BODY, SCRAPERS, AND KNIVES**

**Trim and Upholstery Tools**

|                                | <i>Page</i> |
|--------------------------------|-------------|
| 112 3-PC. Non-Marring Pick Set | 55          |
| 113 5-PC. Clip Lifters         | 55          |
| 114 3-PC. XL Clip Lifter Set   | 55          |
| 115 27-PC. Clip Lifters        | 56          |
| 116 Mini Pry Bar Set           | 56          |
| 117 5-PC. Trim Remover Set     | 56          |
| 118 11-PC. Trim Tool Kit       | 56          |
| 125 5-PC. Trim Tool Kit        | 56          |

**Clip Pliers**

|                              |    |
|------------------------------|----|
| 55 Body Clip Pliers          | 56 |
| 56 Recessed Body Clip Pliers | 56 |

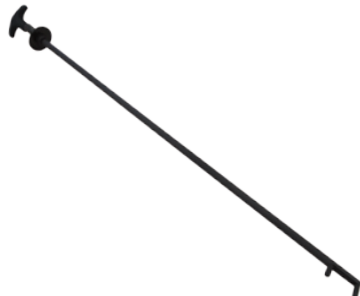
**Knives and Scrapers**

|                                       |    |
|---------------------------------------|----|
| 17 24" Urethane Cut Out Knife         | 57 |
| 26 18" Urethane Cut Out Knife         | 57 |
| 136 4-PC. Putty Knife Scraper Set     | 57 |
| 536 Monster Knife                     | 57 |
| 536-4 4-PC. Monster Knife Merchandise | 57 |
| 701 Mini Scraper                      | 57 |
| 701-30 Mini Scraper Merchandiser      | 58 |
| 701-50 Mini Scraper Merchandiser      | 58 |
| 536-700 Mini Razor Knife (Individual) | 58 |
| 717 Extended Razor Blade Scraper      | 58 |
| 747 Scraper-Mate Sticker Remover      | 58 |
| 709 Poly Guard Blades                 | 58 |
| 52600 4-PC. Scraper Set               | 58 |



### 730 Magnetic Belt Holder

- Provides an “extra hand” installing drive belts by keeping them from falling off pulleys
- Supplied with a magnet that firmly holds belt to pulley
- Multiple belt holders can be used during application



### 734 “The Grabber” Serpentine Belt Tool

- Clamping jaw allows user to position serpentine belt without the belt slipping out of the tool
- Tru-grip and long reach allows belt routing in tight access areas that would normally be difficult if not impossible
- Body made of light-weight alloy steel for durability and strength
- Ergonomic handle provides comfort and ease in use, acting as an extension of the user’s hand
- Patent Pending

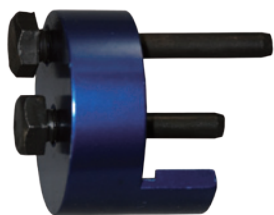


### 738 Serpentine Belt Tool

- Fits tensioner pulleys with 13mm-16mm, 18mm hex or 3/8” and 1/2” square drives
- For hard to access tensioners

**Includes:**

13mm and 15mm 12-point wrenches built into the handle, 13mm, 14mm and 15mm crows foot wrenches



### 735 Euro Stretch Belt Installation Tool

Stretch belts are extremely difficult to install and easily damaged if not using the right tool. This tool makes the job effortless, stretching the belt and guiding it into place.

- Quickly and easily installs stretch belts without damage to the belt or pulley
- Two pin configurations to accommodate multiple designs found on many European vehicles
- Stretch belts are being used more often in new vehicles making this tool more necessary
- Patented



### 736 Stretch Belt Installation Tool

- Quickly and easily installs stretch belts without damage to the belt or pulley
- Stretch belts are being used more often in new vehicles making this tool more necessary
- Patented



### 737 Subaru Stretch Belt Installer

All 2008 to current models of Subaru Impreza, Outback, and Forester models feature a stretch belt. When replacing these belts, traditional tools and even current “stretch belt tools” will not work due to access issues.

- Quickly and easily installs stretch belts without damage to the belt or pulley
- Stretch belts are being used more often in new vehicles making this tool more necessary

**360 Engine Cylinder Hone, 2"-7"**

Extremely versatile hone for 2" to 7" (56mm - 178mm) diameter cylinders found on cars, trucks, buses, tractors, industrial engines, and small air-cooled engines. Use with a high or low speed drill.

- Flexible shaft, controlled spring action; spread control limiters are features that contribute to faster changing from one cylinder to another
- Fast cutting action
- Includes with 4" (102mm) medium grit stones

**Replacement hones:**

**361**, 220-240 med. grit set (3), **361-01**, 400 fine grit set (3), **361-02**, and 100 coarse grit set (3)



**32300 Adjustable 2"-5" Cylinder Hone Deglazer**

An extremely versatile hone for 2" to 5" (56mm - 127mm) diameter cylinders for many applications.

- For use with a high or low speed drill
- Adjustable, knurled tension knob controls pressure for varying diameter cylinders
- Fast cutting action

**Replacement Stones:**

**32400**, 220-240 med. grit set (3)



**641 Piston Ring Compressor Set**

- 7-piece set installs piston rings from 2-7/8" to 4-3/8" (73mm to 111mm)
- Works both vertically and horizontally
- Set includes fine tooth ratcheting pliers for accurate compression and 6 interchangeable bands

**Interchangeable Bands:**

**641-1**, band sizes 2-7/8" to 3-1/8"

**641-2**, band sizes 3-1/8" to 3-3/8"

**641-3**, band sizes 3-3/8" to 3-5/8"

**641-4**, band sizes 3-5/8" to 3-7/8"

**641-5**, band sizes 3-7/8" to 4-1/8"

**641-6**, band sizes 4-1/8" to 4-3/8"



**ENGINE - Engine Cooling**

**244TNZ Heater Hose Disc 4-Piece Set**

- Thicker than most hose disconnect tools, so you will not get hung up or break the connector
- 40-degree offset designed for jobs up against the firewall or in tight spaces
- Similar tools may have handles that get in the way, our low-profile design does not
- Set of four will cover all your quick connect hose needs
- Patent Pending



**751 GM Thermostat Wrench**

Designed to work on GM 3.1L and 3.4L engines. In these applications, the bottom housing bolt is almost inaccessible without removing other parts - until now.

Our GM thermostat wrench, with its unique shape and design, will allow users to remove and install the housings in a fraction of the time, compared to using other methods.

- 13mm, 12-point with special bends specifically for GM's 3.1L and 3.4L engines
- Can be used for other applications



Category continued on the next page >>>



### **752 Variable Pin Spanner Wrench**

The universal design of this wrench ensures that it will fit on a wide variety of pulleys that feature holes or slots, including both crankshaft and camshaft pulleys.

- Adjustable from 1-1/4" up to 5". Use with a 1/2" drive ratchet or breaker bar

**Accommodates the most common metric dual-pin configurations:**

3.5mm, 4mm, 4.5mm, 5mm, 6mm, 7mm, and 10mm



### **171 Ford 6.0L Diesel Head Bolt Adapter**

- Designed to loosen and tighten diesel head bolts on 6.0L Powerstroke® diesel engines
- Offset of the adapter increases torque for loosening stubborn fasteners and creates better access
- The low-profile allows for easy access to head bolts without the need to remove the cab, A/C components, or multiple engine-related parts, saving time and money



### **195 Power Steering Pump Remover & Installer Kit**

This kit has nearly everything you need to remove and install power steering pump pulleys in Chrysler®, Ford®, and GM® vehicles with Saginaw®, Thompson®, and Ford C111 and C2 power steering pumps. Fits 1-1/8", 1-1/4", 1-5/16" and 1-3/8" pulley hub diameters.

**Applications:**

1988–newer GM cars equipped with Quad 4 engines, 1991–94 GM 3.1L V6; 1991–newer 3800 V6 engines; 1994–newer GM 3100 V6; 1999–newer GM 3400 V6, 1992–newer Ford Crown Victoria and Mercury Grand Marquis with 4.6 V8 engine, 1997–newer Ford truck with 4.2 & 4.6 V6, 5.4 V8, and 6.8 V10 engines



### **386 Harmonic Balancer Puller**

Designed for removing damper pulleys in tight engine compartments, without removing the radiator.

- Contains the 3-jaw puller, four lengths of forcing rods, and a forcing screw with a 3/8" square drive for ratchet use, and a 3/4" hex for wrench or socket use

**Applications:**

GM® 2000 Gen III (1997-2007) 4.8L, 5.3L, 5.7L 6.0L, and 8.1L V8s, Cadillac® 4.5, 4.6, and 4.9L V8s beginning in 1988, Chevrolet®/Isuzu® trucks and SUVs 2003–later 4.2L I6, 2004–current 3.5L I5 and 2005–current 2.8L I4, Chrysler® engines from 1990–later, including 2.0L, 2.4L-4s; plus 2.5L, 2.7L, 3.3L, 3.5L, and 3.8L V6s, Ford® 1995–later V8 engines with 3 spoke pressed on damper, and Mitsubishi® Eclipse with 1995–1999 2.0L DOHC non-turbo engines



### **499 Ford® 7.3L Diesel Rear Main Seal and Sleeve Removal and Installation Kit**

Safely and easily remove and install rear main seals and crankshaft wear rings for Ford® 7.3L Powerstroke™ engines.

- For 1994-2003 Ford 7.3L diesel engines of 3/4-ton and 1-Ton Trucks (not for Navistar engines)
- Contains all necessary to remove and install wear sleeve as well
- Eliminates the need for make-shift method that often lead to unwanted damage



**980 Crank-Bolt Socket Set**

- Deep counter-weighted sockets to add more torque to break loose stubborn crank bolts for Honda, Toyota, and other makes
- Includes 17mm, 19mm, and 21mm
- Comes in a blow-molded case

**Applications:**

Honda/Acura® models: Accord®, Civic®, Pilot®, CRV®, Odyssey®, CL, TL, Integra®, MDX® vehicles  
 Toyota/Lexus® models: Camry®, Corolla®, 4Runner®, Sequoia®, ES300, LS400 vehicles  
 Any vehicle with a 17, 19, or 21 mm crank bolt

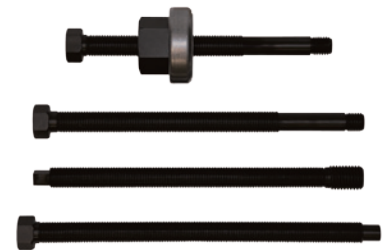
**38500 Master Harmonic Balancer & Pulley Installer**

Two of our best-selling harmonic balancer installation sets combined to create a true “Master Set”. A wide-ranging set applicable to nearly any domestic or foreign applications.

- Install harmonic balancers on many popular late model Ford®, GM®, Dodge®, and Chrysler® engines with recessed threads for the crankshaft bolt and/or traditional setups
- Can be used for the installing underdrive or oversized pulleys
- Features four high-quality, long-reach threaded adapters, twelve standard, threaded adapters, force nut, and pressure bearing(s) to install balancers and pulleys with ease
- Long reach installer utilizes a heavy-duty, friction-free nut and pressure bearing assembly
- Offers more applications than other sets on the market
- Comes in a blow-molded case

**38700 Long Reach Harmonic Balancer and Pulley Installer**

- Install harmonic balancers on many popular late model Ford®, GM®, Dodge®, and Chrysler® engines with recessed threads for the crankshaft bolt
- Can be used for the installing underdrive or oversized pulleys
- Traditional type balancer pulley installers will not provide the reach to work in many applications
- Features four high-quality, long-reach threaded adapters and force nut to enable technicians to install these balancers and pulleys with ease
- Comes in a blow-molded case

**38710 Ford® EcoBoost® Long Reach Harmonic Balancer Installer**

Achieve easy installation of harmonic balancers of Ford® EcoBoost® and various other Ford®/Lincoln® engines from 2011 to 2018. The highlight of this tool, besides the reach and ease of use, is the nut and bearing sleeve. Included spacer to fit into pulleys and limit interference.

- Can be used on 2.7L, 3.0L, 3.3L and even 5.0L engines in Ford®/Lincoln® cars, trucks, and SUV's
- Nut and bearing sleeve assembly reduces friction while ensuring a proper fit
- Accesses hard to reach areas

**Ford/Lincoln applications:**

Ford® car, Ford® F-150® and Lincoln® with EcoBoost® and various other engines: 2.7L, 3.0L, 3.3L, and 5.0L (32 valve) in the model years: 2011-2018 (applications vary by model year)

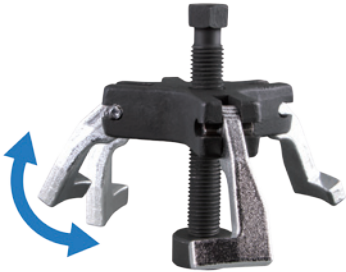


Category continued on the next page >>>



### **38800 Harmonic Balancer Installer**

- Ideal for installing harmonic balancers with pressed on single or multi-groove drive pulleys
- Contain twelve thread adapters to fit more applications than other brands
- Utilizes a heavy-duty, friction-free pressure bearing to create evenly applied force while tightened



### **38000 Ratcheting Harmonic Balancer Puller**

Remove harmonic balancers without the hassle of trying to start bolts or the frustration of positioning multi-jointed puller legs.

- Three ratcheting legs with puller feet eliminate the need for bolts
- Ratcheting legs adjust and hold their position to make one person use easier
- No need to remove radiator or other components with this compact design

#### **Applications:**

GM® 5.3L, 5.7L LS1, 6.0L LS2, 6.2L LS3, and 7.0L • Ford® 5.0L Coyote • Most three and six spoke harmonic balancers/pulleys



### **38100 Ford and Mazda Crankshaft Holder**

- Provides a secure fit to hold the harmonic balancer to allow easy removal or installation the crankshaft bolt
- A 1/2" drive tab allows for the use of a ratchet or breaker bar for additional leverage
- Heavy-duty construction and rust-resistant finish
- Fits multiple models of Ford, Mazda, and Volvo with 2.0L, 2.3L, and 2.5L engines
- Applications include popular models such as Escape®, Fusion®, and even Transit®



### **38110 Ford Harmonic Balancer Holder**

- Provides a secure fit to hold the harmonic balancer to allow easy removal or installation the crankshaft bolt
- A 1/2" drive knockout allows for the use of a ratchet or breaker bar.
- Heavy-duty construction and rust-resistant finish
- Fits multiple models Ford models and engines from 1992 to 2016



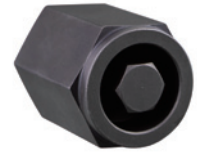
### **754 3-in-1 Subaru Sprocket Tool**

Specially designed to assist in removing multiple cam sprockets on multiple Subaru applications, holding the sprocket while removing the bolt without damaging the sprocket.

- Allows for removal of the intake, exhaust cam, and AVCS intake cam sprockets without damaging the cam or the sprocket
- Can be used during many jobs, including cam seal renewal, cylinder head removal, or motor tear downs
- Prevents damage to critical components
- 1/2" Drive connection for use with breaker bar
- Compact design makes for easy storage

**7541 Subaru Hex Bit**

- Specifically designed to fit Subaru crankshaft sprocket bolt
- Designed for use with a 1" socket or wrench
- Impact rated



**198 Subaru Crank Pulley Tool**

- Designed to hold harmonic balancer for removal and installation
- Combines the individual tools available into one tool, while also increasing applications
- Eliminates the need to remove the radiator to make space for an impact wrench. Time is saved by not having to refill and bleed the air out of the cooling system when changing a timing belt

**Applications:**

1.8L, 2.2L, 2.2L Turbo, and 2.5L Subaru engines



**ENGINE - Thread Repair**

**38900 Two Valve Ford Triton Spark Plug Thread Repair Kit**

Designed to aid in repairing Ford engines modular cylinders heads (1996-2003)

- A quality, fool-proof repair system that is cost effective and fast
- Oversized steel alloy insert will repair other inserts that fail and has no ill effects from heat transfer
- Average repair times as short as 25 minutes
- Patented

**Replacement inserts:** 389-100 (14mm x 1.25)



**39100 Ford Triton Spark Plug Extractor**

- Extracts frozen and broken off spark plug sleeves in 2004 to present Ford Triton Engines
- Machined guide works with extra-long tap and extractor to make sure the job is done right
- It is recommended to also purchase 39100 or 39500
- Saves time and money



**39200 Ford Triton Spark Plug Porcelain Extractor**

When extracting spark plugs in Ford Triton engines (2003 and up), fragments of porcelain and debris may need to be removed for the tool to work effectively and to prevent damage. Since Ford recommends not pushing this material down, technicians can utilize this tool to adhere to the broken pieces for easy extraction.

- Provides an effective method to thoroughly extract broken porcelain and other possible debris that occurs when removing spark plugs on these Ford engines, preventing damage or a failed repair
- Applicable to Ford Triton Engines (2003 and up)
- Uses a special perma-bond, allowing user to extract the broken porcelain and perhaps other debris from the sleeve
- Saves time and money



*Category continued on the next page >>>*



### **39300 Three Valve Ford Triton Insert Kit**

With Ford some gasoline engines, the spark plugs tend to break during routine maintenance. If not properly repaired, this may lead to damaged or even useable spark plug threads, potentially causing a misfire or spark plug blowout.

- Applicable in three-valve 5.4L and 6.8L gasoline engines built before 10/9/07 and three-valve 4.6L engines built before 11/30/07 found in many 2004–2008 Ford, Lincoln, and Mercury vehicles
- Provides an effective method to thoroughly extract broken porcelain and other possible debris that occurs when removing spark plugs on these Ford engines, preventing damage or a failed repair
- This kit will allow the user, with simple step-by-step instructions, to repair those damaged threads in 30 minutes or less per cylinder
- Saves time and money

**Replacement inserts:** 393-100 (16mm x 1.5)



### **39500 Ford Triton Broken Spark Plug and Electrode Removal Set**

This set is a collection of two our most popular Ford engine specific tool sets. Combining these sets gives users a everything to properly remove broken spark plugs, as well as handle any debris removal.

- Applicable to 4.6L and 5.4L Ford three-valve engines, including Triton series engines (2003 and up)
- Saves time and money

## FUEL, IGNITION, AND EMISSION SYSTEMS - Emission Tools



### **841 11-Piece Oxygen Sensor Socket Set**

- A versatile set is used for the installation and removal of oxygen sensors on most domestic and import vehicles, includes the most popular sizes of oxygen sensor sockets
- Provides a method for removal and installation without damage to sensor
- Comprised of SAE and metric sizes

#### **Includes:**

1/2" Dr x 29mm x 6pt x 90mm  
3/8" Dr x 7/8" x 6pt x 90mm  
1/2" Dr x 27mm x 12pt x 78mm  
3/8" Dr x 7/8" x 6pt x 80mm  
3/8" Dr x 1" & 1-1/16" x 74mm  
1/2" Dr x 7/8" x 50mm  
3/8" Dr x 7/8" x 50mm  
1/2" Dr x 1" x 7/8" 6pt  
1/2" Dr x 22 x 6pt x 88mm  
3/8" Dr x 22 x 6pt offset, deep  
Sensor Thread Chaser M18 x 1.5



### **841-11 Sensor Thread Chaser (M18 x 1.5)**

- Can be utilized with 3/8" drive tools or a 13/16" 6PT socket to restore or clean the threads of O2 sensor ports and other sensors

**842 7-Piece Oxygen Sensor Socket Set**

- A versatile set is used for the installation and removal of various sensors on most domestic and import vehicles, includes the most popular sizes for sensors
- Provides a method for removal and installation without damage to sensor
- Comprised of SAE and metric sizes

**Includes:**

- 7/8" - Vacuum Switch Socket
- 7/8" - Oxygen Sensor Socket (Short)
- 7/8" - Oxygen Sensor Socket (Long)
- 1" - Oil Pressure Sending Unit Socket
- 1-1/16" - Oil Pressure Sending Unit Socket
- 27 mm - Oil Pressure Sending Unit Socket
- 29 mm - Vacuum/Pressure Switch Socket



**843 Oxygen Sensor Wrench**

- Flex head offers essential clearance for removal or installation of oxygen sensors awkwardly positioned or when leverage is needed around an exhaust pipe
- Designed for all oxygen sensors with 7/8" hex
- For numerous applications including Ford 4.6L and 5.4L engines and knock sensors used on mid-sized trucks, SUV's, and vans
- Incorporates a harness pass-thru in socket



**844 6 and 12-Point Flex O2 Wrench**

- Designed for use with most oxygen sensors
- Double sided head provide two tools in one, for 6-point and 12-point sensors
- Offset, low-profile design gives technicians more access and leverage to remove sensors in hard to reach areas
- Incorporates a harness pass-thru in socket



**FUEL, IGNITION, AND EMISSION SYSTEMS - Fuel and Ignition System Tools**

**64 High-Energy Ignition Tester**

- Safely checks for spark on any ignition system or engine with 1 to 12 cylinders
- Sealed chamber reduces risk of fire around high-pressure fuel injection systems or marine use
- Attach spark plug wire to tester and clip tester to engine and turn over the engine and check for the presence of spark



**65 Noid Light Set**

- Provides a quick and easy method for detecting electrical signal at the fuel injector
- A comprehensive kit of eight Noid Lights applicable to many popular makes, including GM PFI, Bosch PFI, Ford TBI, Geo TBI, GM SCPI and GM TBI
- Includes a convenient harness extension design for remotely viewing from the driver's seat
- Comes in a durable blow-molded case



*Category continued on the next page >>>*



**612 Universal Ignition Spark Tester**

- Works on ignition systems from high energy electronic automotive systems to small engines
- Tests no start conditions and spark strength
- Tests high energy and distributor-less ignitions



**693 Ignition Point Files**

- Quality double cut ignition files guaranteed to file tungsten and platinum contact points
- Made of super hard, high quality steel



**253 Fuel Tank Locking Ring Tool**

- Unique design fits on multiple makes and models of fuel tank lock rings
- Easily removes and installs fuel tank lock rings when servicing fuel pump or fuel sending unit
- Allow for greater clearance on the top of fuel sending units than other versions

**Applications:** (not limited)

2004 and newer Ford® F-150® trucks, 2004 and newer Chevrolet® 1/2-ton and 3/4-ton trucks, FCA® mini vans, PT Cruisers®, Dakotas®, and Durangos®



**684 Line Quick Disconnect Tools**

- For spring lock coupling/ snap lock air conditioning lines, late model fuel lines and automatic transmission cooler lines found on GM, Ford, and Chrysler vehicles
- Six popular sizes fit the following tubing O.D. sizes: 5/16" (8mm), 3/8" (9mm), 1/2" (13mm), 5/8" (16mm), 3/4" (19mm), and 7/8" (22mm)
- Also works on some transmission and radiator cooler lines
- Color coded and stamped with tool size for quick identification



**683 Master Disconnect Set**

- The most complete disconnect set on the market
- No more random disconnect tools laying around to be lost
- Wide array of disconnect tools in one convenient set



**689 Fuel Line Plier**

- Designed for quick connect, slide, and lock couplers found on fuel lines found on European and domestic vehicles including Audi, GM, Mercedes, Toyota, and VW models
- Can be used to pull fuel lines, as well as vacuum hoses on some Mercedes models
- These pliers are designed for quick connect, slide and lock couplers found on European and domestic vehicle fuel lines

**55000 11-Piece Deutsch Terminal Service Kit**

- Designed to crimp and release the Deutsch terminals found throughout various industries
- For use on Deutsch open and closed barrel terminals, Weather Pack, Metri-Pack, and other terminals

**Contains:**

- 3 – Terminal crimping tools ranging from 12-22 gage wire
- 1 – Open barrel crimping tool for 14-24 gage wire and seals
- 1 – Weather Pack crimping tool
- 5 – Terminal release tools
- 1 – Weather Pack release tool



**55100 6-Piece Deutsch Terminal Service Kit**

- Designed to crimp and release the Deutsch terminals found throughout various industries
- For use on Deutsch open or closed barrel terminals and other open barrel terminals

**Contains:**

- 2 – Terminal crimping tools ranging from 14-22 gage wire
- 1 – Open barrel crimping tool for 14-24 gage wire and seals
- 3 – Terminal release tools



**55004 Open Barrel Crimping Pliers**

- Used to crimp Deutsch terminals, as well as Weather Pack and other types
- For use with wire gage 14-24
- Compact design for improved access
- Steel construction for strength and durability
- Dual element handles for superior grip and cushioning



**55005 Terminal Crimping Pliers**

- Used to crimp Weather Pack, Metri-Pack, and other terminals and seals with ease and accuracy
- Applicable for wire from 12 gage to 22 gage and two seal or Metri-Pack size from Ø3.45 to Ø4.25
- Crimps open barrel terminals with two-crimp process
- Compact design for improved access
- Steel construction for strength and durability
- Dual element handles for superior grip and cushioning



**611 17-Piece Electrical Back Probe Kit**

- Access electrical circuits from the back side of connectors
- Extended wires make testing connectors more convenient
- Access to check for voltage or amperage while connector is plugged in



**613 20-Piece Electrical Back Probe Kit**

- Access electrical circuits from the back side of connectors
- Extended wires make testing connectors more convenient
- Access to check for voltage or amperage while connector is plugged in



*Category continued on the next page >>>*



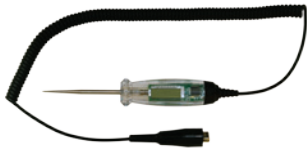
### 69 Amp Alert

- Use to instantly detect parasitic drain without the need to remove fuses
- Simply touch probes to the top of the fuse and tool gives off a distinct audible tone when parasitic drain (current) is detected
- A huge time saver for the technician. Cuts troubleshooting time by up to 90%
- Avoid blown multi-meter fuses
- Resolution down to 5 milliamps



### 70 Heavy-Duty Circuit Tester

- Tests 6V-12V-24V AC or DC systems for open, grounded, or short circuits
- 60", 16-gauge wire with heavy-duty ground clip
- Replacement indicator bulbs: 67-01



### 78 LCD Test Light for 6V, 12V, 24V Systems

- Test for voltage on both power and ground in DC circuits on 6v, 12v, 24v DC systems
- LCD test light can be used for testing both power and ground voltage on DC circuits
- Backlit LCD display
- Stainless steel probe
- Coiled cord with reach up to 12 feet
- For use with DC circuits only



### 81 Logic Light Circuit Tester

- Patented LED edge-lighting illuminates the handle red when power is detected and green when the probe is grounded
- Internal power source allows user to easily and safely test live and non-live 6V, 12V, and 24V DC systems without the need for an additional power source
- Save time by quickly and easily determining if a circuit is grounded
- Safe for use with sensitive modern onboard electrical systems



### 63 Window Tint Meter

- Measures the total amount of Visual Light Transmission (VLT) through a window treated with aftermarket window tint film



### 74 "The Original" Amp Hound

- Drastically reduces the time needed to find the current in fused circuits: ATM, ATO, and MAXI
- Audible beep instantly tells you if there is any current in any circuit
- Fuses do not need to be removed to read current, check entire fuse block quickly
- Easily find parasitic drain
- Battery operated with an automatic shut-off
- Includes standard test leads
- Patented



### **72 Amp Hound 2**

- Safe and convenient method to determine real time readings of current and amps in fused circuit without removing fuse
- Ideal for locating a parasitic drain
- Special Fuse Adapters lock on to fuse to give user hands free control
- Includes all features from original Amp Hound that allows easy component testing and Parasitic Drain location
- Takes amperage readings without having to access hard to reach components
- Audible tone when in contact with fuse, ensuring use has complete contact



### **73 Ripple Quick Tester**

- Allows the user to test an alternator for bad diodes, bad stators, and intermittent diodes or stators without ever lifting the hood
- Simply plug the tester into the vehicles DC port and the tester will give results in a series of LED flashes to pinpoint exact problem
- Many late model vehicles have access issues when it comes to the engine compartment, this tool will greatly decrease the time spent troubleshooting



### **76 Deluxe 12-Volt and 24-Volt Relay Tester**

- Tests an entire circuit from the battery to the component in question, as well as determining if the relay itself is functioning properly
- This tool gives the technician the ability to instantly determine the problem within a tested circuit
- Identifies at the push of a button if a wire, a part, or a relay is defective, without the use of a multi-meter. If the technician wishes to gain more information about the problem, the tool also features easily accessible ports for use with other diagnostic tools
- Other uses include jumping relays, remote-control starter when doing a compression test or adjusting timing, and running a freon compressor during A/C service
- Includes the tester, 6 popular relay leads, 1 universal relay lead
- Comes in a blow molded case with a high-density foam insert
- Works with both 12 and 24-volt systems
- Patented



### **84 WIFI Borescope**

A waterproof, hi-res camera and LED lighting give a real “inside look” when inspecting and diagnosing issues. With an independent WIFI signal, all that is needed to operate this borescope is a cell phone. The rigid, yet still flexible cable makes it easy to maneuver around obstacles.

- Hi-Res, multi-aspect camera (up to 1080) with adjustable LED lighting
- An independent WiFi signal (30 Ft. approx.) means no need to connect to a computer
- Mobile app for both Android (2.3 and up) and IOS (6.0 and up) devices gives users options: image capture, video recording and album storage
- Lens and 58-inch cable are IP67 certified dust-proof and waterproof, up 3 feet of water for up to 30 minutes. (Transmitter is not rated.)
- Long, bendable cable is flexible yet rigid enough to give users access into hard to view areas.
- Compact camera is only 6mm in diameter by 35mm in length, allowing user greater access, especially in glow plug holes
- Rechargeable lithium battery in the transmitter
- Attachments (hook, magnet, and mirror) included, unlike other brands

**Replacement accessories kit:** 84-1



## ELECTRICAL AND DIAGNOSTIC - Alternator Service



### 750 22-Piece ADP Kit

Used to service both OWC (One-Way Clutch) and OAD (Overrunning Alternator Decoupler) style pulleys. To remove these pulleys, the shaft coming from alternator needs to be locked in place while the pulley turned.

Since the OWC pulley in 1997, followed by the OAD in 1999, more manufacturers are utilizing these designs in their belt drive systems.

#### Service vehicles included but not limited to, the following list:

Audi, BMW, Buick, Cadillac, Chevrolet, Chrysler, Citroen, Dodge, Fiat, Ford, Honda, Lexus, Mercury, Mercedes-Benz, Opel, Pontiac, Peugeot, Porsche, Renault, Saturn, Seat, Scion, Toyota, and VW



### 756 5-Piece Alternator Service Bit Set

Removes and installs many alternator decoupler pulleys on many popular vehicles. When removing these pulleys, the shaft coming from the alternator needs to be locked in place while the pulley is either direction, depending on the manufacturer.

- For removing and installing de-coupler pullers found on numerous vehicles, domestic and foreign

**Set Includes:** H22 x 33T, H17 x H19, H10 x 70mm L, 12mm x 75mm L x T50, and Spline M10

## ELECTRICAL AND DIAGNOSTIC - Radio and Antenna Tools



### 135 Ford Radio Remover Tool

- Tool inserts into holes on radio face to release retaining clips.
- Fits Ford vehicles 1987 to current
- Makes removal fast and easy



### 142 Antenna & Radio Socket Set

- Eleven-piece kit in molded case
- Universal antenna wrench
- Ford radio removal tool
- Deep sockets to remove and install the tamper-proof radio nuts from many GM, Chrysler, and other aftermarket radios
- Antenna nut sockets that cover most import and domestic antenna nuts

## ELECTRICAL AND DIAGNOSTIC - Battery Maintenance



### 549 Battery Terminal Clamp Spreader

- Designed to both spread battery cable clamp and clean terminal in one swift operation
- Forged and heat-treated jaws
- 7-1/2" overall length



### 553 Heavy-Duty Battery Post & Terminal End Brush

- Heavy-duty, designed with tapered bristles to clean posts and terminal ends quickly and safely

**Bearing Splitter**

**503 Bearing Splitter - Capacity is 0" to 4-1/4"**

**508 Small Bearing Splitter - Capacity 1-1/4" to 2-1/4"**

**509 Medium Bearing Splitter - Capacity 3" to 4-1/2"**

**511 Large Bearing Splitter - Capacity 4" to 6"**

Designed to remove and pull bearings in tight areas such as removing generator gears, bearing cones, bearings, and similar instances where ordinary puller jaws cannot reach

- Removes thin faced & cone shape gears, with a beveled edge that can be easily placed behind the part to provide a secure grip of the component
- Split and separate bearings where puller jaws cannot be used
- Made from industrial strength components, including heat-treated threaded rod
- Threaded surface ports allow splitter to be used in conjunction with other flange-style pullers



**501 7-Ton Bar Type Puller Bearing Separator Set**

Includes a Bearing Splitter with 4" capacity, two sets of hex push puller legs, and 8" bar type puller head mated with a custom thread forcing screw.

- Capable of up to 7-tons capacity and a working range of 8" to 16"



**502 5-Ton Bar Type Bearing Separator Pusher and Puller Set**

- Set includes two popular bearing splitters (2" and 3"), four sets of hex push-puller legs and a bar-type puller head with a 9/16" forcing screw
- Separator tools are used with bar puller and legs for a wide variety of pulling jobs
- The 5" puller cross-bar with a 6-1/4" forcing screw or each of the bearing separators may also be used separately or in combination with other pullers or tools



**PULLERS AND INSTALLERS - Multi-Use Pullers**

**956 9-Way Slide Hammer Puller Set**

- Pulls flange-type rear axles and most front-wheel drive hubs
- Internal and external jaws provide a variety of combinations to pull bearings, gears, and seals
- Two and three-way cross blocks and cone provide the perfect jaw configuration for most jobs
- Includes a grip wrench adapter and a dent puller attachment for sheet metal or other unique pulling requirements



**237, 240, 941, 942, and 944 Two-Jaw Pullers**

- Designed with forged yokes, heat treated jaws, and plated for years of dependable use
- Center screws heat treated and finished in black oxide for long-lasting durability

**Available sizes:**

**237, 2-Ton, Two-Jaw Adjustable Puller**

2-1/8", 3-1/4" spread, 3/8" center screw - 24" x 4-3/4"

**240, 2-Ton, Two-Jaw Adjustable Puller**

3-1/2", 4" spread, 5/16" center screw - 24" x 3 7/8 in"

**941, 5-Ton, Two-Jaw Reversible Puller**

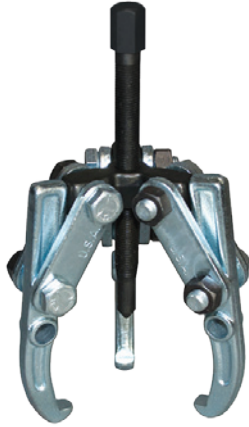
3-1/2", 6" spread, 9/16" center screw - 20" x 6 3/8"

**942, 5-Ton, Two-Jaw Adjustable Puller**

5-1/2", 7" spread, 9/16" center screw - 20" x 6 3/8"



*Category continued on the next page >>>*



**134, 951, 952, 953, and 954 Two & Three Jaw Combination Pullers**

- Pullers can be used as either a 2 or 3 jaw puller simply by changing the jaws on the yoke
- Pullers have standard threads, zinc, and black oxide finish
- Yoke and jaws are forged, and all components heat-treated

**Available sizes:**

**134, 2-Ton, Two & Three Jaw Combination Puller**

3 1/2", 4" spread, 3/8" center screw - 24" x 4-1/4"

**951 Two & Three Jaw Combination Reversible Puller**

3-1/2", 7" spread, 9/16" center screw - 20 x 6-3/8"

**952, 5-Ton, Two & Three Jaw Adjustable Combination Puller**

5-1/2", 8" spread, 9/16" center screw - 20 x 6-3/8"

**953 7-Ton, Two & Three Jaw Combination Reversible Puller**

5-1/2", 10" spread, 11/16" center screw - 18 x 8-3/8"

**954 7-Ton, Two & Three Jaw Combination Adjustable Puller**

9", 11" spread, 11/16" center screw - 18 x 8-3/8"



**187 Steering Wheel Puller**

- Designed to pull steering wheels on all major makes of automobile
- 5/8" x 4" center screw equipped with a floating swivel to prevent damage to horn wire connections
- Five sets of side screws provided



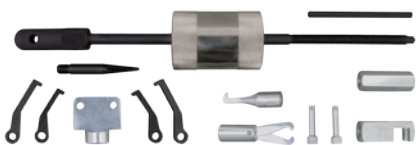
**192 Pulley Puller**

- Provides positive pulling power to remove pressed-on one or two groove pulleys on alternator, power steering pumps, and alternator bearings
- No loose parts to be lost or misplaced



**957 Adjustable Puller**

- A versatile puller designed to work in numerous scenarios, especially in tight areas
- Jaws stay put before applying tension for ease of use 3-jaw adjustable puller
- Adjustable from 2" to 5" diameter
- 2" depth



**49700 14-Piece Light-Duty Slide Hammer and Puller Set**

The slide hammer with its array of attachments can be utilized to pull seals, bearings, freeze plugs, and studs.

- 2 lbs. slide hammer and attachments can be used in various applications, automotive and beyond
- Multiple puller configurations can be used with inner spreads from 3/8" to 1-1/4", outer spreads up to 2-1/2", and depths of up to 2-1/2"
- All components are in a blow-molded case for storage and easy organization

**905 Light-Duty U-Joint Puller**

- The ideal solution for disassembling seized, stubborn U-joints quickly and easily of virtually all cars, light-duty trucks, and farm machinery
- Manufactured from high-grade materials for strength and durability
- Eliminates the need to employ dangerous and less-effective methods, like hammer-and-vice which have an inherent high potential of damaging components



**907 Intermediate U-Joint Puller**

- The ideal solution for disassembling seized, stubborn U-joints quickly and easily on most medium-duty trucks, school buses, as well as farm and light industrial vehicles
- Manufactured from high-grade materials for strength and durability
- Eliminates the need to employ dangerous and less-effective methods, like hammer-and-vice which have an inherent high potential of damaging components



**199 Heavy-Duty U-Joint Puller**

A heavy-duty solution for disassembling even the most seized stubborn U-joints in minutes on virtually all Class 7 and 8 trucks and machinery.

- Engineered for use with up to a 1" impact tool
- Eliminates dangerous vice-and-socket or hammering removal methods
- Does not damage the driveshaft, yokes, joints or bearing cups

**Applications**

U-Joints with bearing cups 1.5" to 2.2" O.D.  
 Spicer 1610, 1710, 1760, 1810, 1880 Series  
 Spicer SPL 140, 170, & 250 Life Series  
 Meritor (Rockwell) 16N, 17N, 18N, 1710 Series  
 Meritor RPL 20, 25 Permalube™ Series



**497 Heavy Duty Yoke Puller**

Simplifies and expedites the removal of heavy-duty yokes on drive shafts, transmissions, and drive axles without damage to yokes or other components. Also, the caps are designed with flexibility in mind to service an extensive range of class 6-8 trucks.

- Fits on multiple Spicer full and half round yokes
- Fits on Meritor (Rockwell) RPL 20 & 25 series
- Manufactured from high grade steel



**18510 Bolt Retained Bearing Cup Installer**

- For use with Spicer 1610-1880 series full-round, bolt retained bearing cups
- Presses in U-joint bearing cups with ease and proper alignment every time, without disturbing or possibly damaging the needle bearings
- A heavy-duty construction to be used with hand tools or impact tools
- Replaces inferior methods such as using a hammer to set the cups



**20200 Magnetic Bearing Cup Installer**

- Used to install bearing cups on light and medium-duty yokes and driveshafts up to 5-5/8" spread
- Internal magnet hold bearing
- Presses in U-joint bearing cups with ease and proper alignment every time, without disturbing or possibly damaging the needle bearings
- A heavy-duty construction to be used with hand tools or impact tools
- Replaces inferior methods such as using a hammer to set the cups



*Category continued on the next page >>>*



**20 Clutch Alignment Tool**

- Designed to align clutch plates and pilot bearings accurately
- Used to align single disc clutches on most domestic and imported vehicles
- Contains: 6 two-step SAE pilot bushings, 2 metric 2 step pilot bushings, center shaft and tapered alignment cone with an 1-1/8" maximum diameter taper



**28 Pilot Bearing Puller with Slide Hammer**

- Removes bearings or bushings on flywheels, pump, generators, etc. with 1/2" to 1-3/8" (13mm to 32mm) inner diameter capacity
  - 3 lb. slide hammer
- Replacement Jaws:** 917-400 (requires two)



**29 Blind Hole Puller Set**

- Designed for removing bearings from a recessed location.
- Set includes a 2-1/2 lbs. slide hammer with T-handle and four collets, for a range of applications with 3/8" – 1-1/4" (10mm to 32mm) inner diameter holes
- Ideal for removing pilot bearings



**31 Pilot Bearing Puller**

- When working space is limited, this puller is a great tool to remove flywheel pilot bearings from automobile, trucks, and tractors
- Can also be used to pull bushings or bearings from generators or starters
- Only 7-1/2" long
- 1/2" to 1-1/4" I.D. capacity jaws



**189 Harmonic Balancer Puller**

- Designed to pull balancers, vibration dampers, pulleys, and gears with tapped holes
- Four slots in yoke allows tool to be used in both two and three-hole applications
- Removable, floating swivel prevents damage to shaft
- Yoke is forged from high grade alloy steel and heat-treated



**506 Adjustable Bearing Pusher & Installer**

- 3-Stepped jaws quickly adjust to accommodate bearing races and seals from .708" – 3.543" (18mm – 90mm)
- All-in-one design eliminates the need for a driver and different size adapters
- Durable and sturdy aluminum construction, equipped with a steel capped striker shaft handle
- Locking screw holds the adjustable jaws in place for one hand use



**49500 Body Dent and Seal Puller**

- Used to remove seals, or it can be used to pull sheet metal
- Equipped with a 2.5 lbs. slide hammer and 13" long shaft for increased pulling force

**49600 Seal Puller**

- Heavy-duty seal puller for removing metal, rubber, or other full lip seals
- Adapter is recessed to keep hook and locks screw securely in place, while user rotates the handle to force the screw through the seal for removal
- 17" length shaft enables high pulling force



**91800 Rear Axle Bearing Puller Set**

Designed to remove flange type, semi-floating rear axle bearings in most late model, rear-wheel drive cars and light-trucks.

- Includes 3 bearing pullers with a range from 1" up to 2-7/8"
- For flange-type, semi-floating bearings
- Designed to capture rear axle bearings firmly
- Comes in a blow-molded case



**PULLERS AND INSTALLERS - Stud and Dowel Removal**

**95200, 95300, and 95400 In-Line Dowel Pin Puller Set**

Eliminate the need of a slide hammer when removing dowels. Fit the appropriately sized collet over the dowel, tighten the sleeve, and use outer sleeve and nut to extract the dowel.

- Simple and effective method for removing dowel pins
- Can be used with air ratchet, or traditional ratchets
- Elimination of the slide hammer saves time and money while eliminating the potential of injury
- Comes in a blow molded case
- Patent pending

**Contains:**

SAE Set includes: 3/16", 1/4", 5/16", 3/8", and 1/2"  
Metric Set Includes: 4mm, 5mm, 6mm, 8mm, 10mm, and 12mm  
Master Set includes both SAE and Metric Collets

**95200, In-Line Dowel Pin Puller Set, SAE**

**95300, In-Line Dowel Pin Puller Metric, Metric**

**95400, In-Line Dowel Pin Puller Master Set**



**95500 and 95550 Stud Extractor Sets**

- Removes studs even if only a few threads are exposed
- Easily installs new studs without damage to threads
- Comes in a blow-molded case

**95500, Stud Extractor Set, SAE**

Sizes: 1/4" x 20, 1/4" x 28, 5/16" x 18, 5/16" x 24, 3/8" x 16, 7/16" x 14, 7/16" x 20, 1/2" x 13, 1/2" x 20, 9/16" x 12, 9/16" x 18, 5/8" x 11 and 5/8" x 18

**95550, Stud Extractor Set, Metric**

Sizes: M6 x 1.00, M8 x 1.00, M8 x 1.25, M9 x 1.00, M9 x 1.25, M10 x 1.25, M10 x 1.50, M14 x 2.00, M16 x 1.5, M16 x 2.00



*Category continued on the next page >>>*



### 19 Stud Remover

- This powerful tool is designed to fit into hard-to-reach spots and remove hard-to-turn studs
- Will remove broken studs with threads with material above the surface
- Capacity from 1/4" to 3/4" (6 to 19mm) diameter
- Roller assembly grips like a pipe wrench
- Works with a 1/2" drive



### 95600 SAE Stud Removal and Installation Set

Quickly and easily remove or install standard studs without damage.

- Specifically designed to make stud removal and installation easy
- Contains multiple sizes, common in the automotive industry
- Eliminates the potential of damage to the stud other methods often cause

**Standard thread sizes:** 5/16" x 18, 5/16" x 24, 3/8" x 16, 3/8" x 24, 7/16" x 14



### 95700 Metric Stud Removal and Installation Set

Quickly and easily remove or install metric studs without damage.

- Specifically designed to make stud removal and installation easy
- Contains multiple sizes, common in the automotive industry
- Eliminates the potential of damage to the stud other methods often cause

**Metric thread sizes:** M6 x 1, M8 x 1.25, M10 x 1.25, M10 x 1.50, M12 x 1.50

## FILTERS, LUBRICATION, AND MAINTENANCE - Band Style Filter Wrenches



### 967 4-In-1 Swivel Oil Filter Wrench

- Wrench set features one swivel handle assembly with four interchangeable bands
- Designed with two detent pins for quickly and easily swap bands
- Fits oil filters 2-3/8" to 4-3/8" (61mm-111mm)



### 993, 994, 995, and 999 Swivel Oil Filter Wrenches

- Features a swivel handle which allows user to get to filters in hard-to-reach areas
- Wide dimpled band securely grips filters without crushing
- Easy-grip vinyl handle

#### 993, Swivel Oil Filter Wrench

Fits filter diameters 2-3/8" to 2-7/8" (60mm-73mm)

#### 994, Swivel Oil Filter Wrench

Fits filter diameters 2-7/8" to 3-1/4" (73mm-83mm)

#### 995, Swivel Oil Filter Wrench

Fits filter diameters 3-7/16" to 3-3/4" (87mm-95mm)

#### 999, Swivel Oil Filter Wrench

Fits filter diameters 4" to 4-3/8" (102mm-111mm)



**989, 991 Swivel Truck Filter Wrenches**

- Features a swivel handle which allows user to get to filters in hard-to-reach areas
- Wide, dimpled band securely grips filters without crushing
- Easy-grip vinyl handle

**989, Swivel Truck Oil Filter Wrench**

Fits filter diameters 4-5/16" to 4-3/4" (110mm-120mm)

**991, XL Swivel Truck Oil Filter Wrench**

Fits filter diameters 5-1/4" to 5-3/4" (134-146mm)



**891, 892, 893 Heavy-Duty Truck Oil Filter Wrenches**

Wide 1-1/2" steel band designed to withstand the high torque requirements of truck, bus, RV, and heavy-duty equipment filters.

- For use with 1/2" square drive

**891, Heavy-Duty Truck Oil Filter Wrench** fits filters 4-1/8" to 4-21/32" (105mm-118mm)

**892, Heavy-Duty Truck Oil Filter Wrench** fits filters 4-21/32" to 5-5/32" (118mm-130mm)

**893, Heavy-Duty Truck Oil Filter Wrench** fits filters 5-5/32" to 5-21/32" (130mm-143mm)



**FILTERS, LUBRICATION, AND MAINTENANCE - Oil Filter Pliers**

**291 Truck & Tractor Filter Pliers**

- Spring-loaded, adjustable pliers can easily adjust from 3-3/4" to 7"
- Heavy forged construction creates leverage for high torque applications
- Can be used in one hand applications



**297 and 298 Filter Pliers**

Pliers design features no-slip jaws with gripping teeth to easily remove stubborn spin-on oil filters

**297**, fits filters with diameter of 2-3/4" to 3-1/4" (70mm-83mm)

**298**, fits filters with diameter of 3-1/8" to 3-5/8" (79mm-92mm)



**302 Adjustable Filter Pliers**

- Self-adjusting, spring action (NOT a slip joint) oil filter plier allows for a full range of filter applications
- Heavy-duty forged construction with textured grip
- Fits filters from 2-1/4" to 6" (60mm-152mm)



**29900 Jumbo Filter Pliers**

- Spring loaded adjustable pliers can easily adjust from 3-3/4" to 7-1/2"
- Heavy-duty, forged construction creates leverage for high torque applications
- Can be used in one hand applications



*Category continued on the next page >>>*



### **29200 Large and Small Filter Pliers Set**

- Two heavy-duty filter pliers in one set
- For servicing and maintaining medium-duty and heavy-duty trucks (Class 7 and 8), as well as large generators, equipment, and machinery

#### **Contains:**

##### **(1) 302, Filter Pliers**

Fits filters from 2-1/4" to 6" (60mm - 152mm)

##### **(1) 29900, Jumbo Filter Pliers**

For filter from 3-3/4" to 7-1/2" (95mm - 190mm)

## FILTERS, LUBRICATION, AND MAINTENANCE - Cup-Style Filter Wrenches



### **785, 788, 789, 791 Cup-Type Oil Filter Wrenches**

These cup-type filters are made of 7 and 16-gauge construction and can withstand up to 85 ft. lbs. of torque. Cup-type design grips like a socket, minimizing the possibility of crushing filters.

- Used with 3/8" drive

#### **785, Cup-Type Oil Filter Wrench**

65mm (2-9/16") - 14 flutes - 1 step

Fits: Champ, Hastings, FM/AC, Wix, NAPA, Purolator, Diahatsu, and Toyota

#### **788, Cup-Type Oil Filter Wrench**

74mm to 76mm (2-29/32" to 3") 15 flutes - 2 step

Fits: Fram, AC, and Saturn.

#### **789, Cup-Type Oil Filter Wrench**

76mm (3") - 14 flutes - 1 step

Fits: Champion, Champ, Lee, Purolator, Mopar, VW, Porsche, Mercedes, and BMW

#### **791 Cup-Type Oil Filter Wrench**

93mm (3-21/32") - 15 flutes - 1 step

Fits Casite, Champ, Champion, GM, Fram, Hastings, Purolator, Wix, Nissan, VW, Porsche, and Renault

## FILTERS, LUBRICATION, AND MAINTENANCE - Strap-Style Filter Wrenches



### **803 Heavy-Duty Filter Strap Wrench**

- This deluxe wrench adjusts quickly to any spin-on filter up to 9" (228mm)
- Features 3/8" and 1/2" forged driver and heavy-duty strap for high torque requirements



### **814 All-Size Filter Strap Wrench**

This filter wrench adjusts quickly to any spin-on filter up to 6" in diameter.

- Strong nylon web belt will not slip
- Use with 1/2" square drive
- **814-02** Replacement Strap available

**987 Heavy-Duty Three-Legged Filter Wrench**

- This three-leg design is ideal for removing spin-on filters in tight access areas
- No handle to interfere with removal
- Long serrated legs driven by a 3/8-in extension and ratchet wrap around the filter
- Fits filters with diameter of 2-1/2-in. to 4-3/4-in. (64mm-121mm)



**988 Three-Legged Filter Wrench**

- Features gear driven legs to grip and turn even some the most difficult filters
- Designed for use with 3/8" square drive or 3/4" hex wrench
- Compact design allows for use in tight spaces
- Removes filters from 2-3/8" to 3-3/4" (60-95 mm)



**996 Oil Filter Socket Set**

- Covers a broad range of applications on both domestic vehicles and imports, such as Audi, BMW, GM and VW
- Durable, high-quality forged 3/8" drive sockets

**Set includes:**

27mm Socket for Mercedes-Benz 1.8L I4, Cadillac STS 3.2L V6

32mm Socket for Saabs, 2.2L GM Ecotec

36mm Socket for BMW M52, M60, M62, M70 and M73 engines; M-B OM604, 605 and 606 engines and Audi/VW VR6 engines



**FILTERS, LUBRICATION, AND MAINTENANCE - General Maintenance Tools**

**610 Diesel Exhaust Fluid Tester**

- Designed to work on Semi trucks, as well as some trucks and cars
- Easy to read discs provide indication DEF quality determined by water concentration levels
- Tests for DEF concentration levels within tank
- Works on petcock and capped type tanks



**38200 4-Piece Oil Plug Remover**

- Contain tools and adapters to remove plastic oil pan drain plugs found on many late model Ford, VW, Audi, and BMW engines
- Revised to include an adapter applicable to Ford/Lincoln plastic oil pan drain plugs of engines: 2.7L / 2.7L (2018) / 3.0L / 3.3L / 3.5L Turbo from 9-12-2018 / 5.0L (2018)
- Designed to slot in and easily release these plugs and not damage the drain plug, as often happens when using other less-effective methods
- When you need a longer reach, take advantage of the 3/8" square drive connection in conjunction with a standard extension
- Comes in a hard case for easy storage



**38400 Drain Plug Repair Kit**

Designed to repair aluminum oil pans with damaged drain plug threads size M12x1.75 commonly found in GM, Ford, and Mazda.

- Allows user to use original plug instead of an over-sized replacement
- Effective for repairing stripped drain plugs without leakage
- Can be used on many different makes, including GM, Ford, and Mazda aluminum oil pans

**Includes:**

Drill bit, counter bore tool, tap, tap guide, insert tool, and five inserts





### **700 Universal Brake Pad Spreader**

- Easily compress both pistons at once, facilitates both single and dual piston applications
- Usage for many vehicles including Ford F150 & F50, Ford & GM front wheel drive vehicles



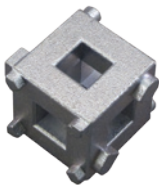
### **702 Disc Brake Pad Spreader**

- Facilitates the quick and easy changing of disc brake pads
- Spreader will compress inner pad and reset piston for easy pad replacement
- Heavy duty construction



### **727 Universal Caliper Turn and Push-Back Tool**

- Compresses any size brake caliper, from motorcycles, standard size cars, trucks, and SUVs, and even some heavy-duty applications
- A 3/8" ratchet can be inserted on the end of the tool for much easier use and increased leverage
- Can also perform front brake jobs by flipping the head around
- Eliminates need for sets with high piece counts



### **722 Disc Brake Piston Remover**

- Rotates the parking brake activated piston back into caliper cylinder when replacing worn pads
- Used on most import, Ford, Chrysler, and some GM vehicles equipped with four-wheel disc brakes
- Use with 3/8" drive ratchets



### **723 Two and Three-Pin Brake Caliper Turn-Back Tool**

- The tool is designed to rotate brake pistons back into the caliper on vehicles with self-adjusting parking brakes
- Replaces kits that contain up to 20 parts by having universally adjustable 2 and 3 pin configurations
- Fits on a standard 1/4" ratchet or breaker bar
- Works on both right and left-hand pistons, as well as most domestic and import vehicles that have self-adjusting parking brakes



### **724 Brake Caliper Turn Back Tool**

Allows you to rewind the pistons in brake calipers

- Works by allowing the rotation of the piston at the same time as pushing the piston back into the caliper
- Rotates brake pistons back into the caliper on vehicles with self-adjusting parking brakes
- Replaces larger kits containing up to 20 pieces
- Fits most domestic and import vehicles

#### **Fits many models including but not limited to:**

Alfa Romeo, Audi, Citroen, Ford, Honda, Jaguar, Land Rover, Mazda, Mercedes, Mini, Mitsubishi, Nissan, Lancer, Toyota, VW, Volvo

#### **725, 2-Pin Brake Rewind Tool** (Purchase individually)

Min 2 side: .830"

Max 2 side: 1.600"

#### **726, 3-Pin Brake Rewind Tool** (Purchase individually)

Min 3 side: .750"

Max 3 side: 1.600"

**62 Brake Fluid Tester (DOT 4 only)**

- Used to quickly and accurately gauge moisture content of DOT 4 brake fluid
- Fluid quality is indicated on an easy to read LED gauge
- For professional use in automotive repair and maintenance



**66 Universal Brake Fluid Tester (DOT 3/DOT 4/DOT 5.1)**

- Quick and easy method to accurately gauge moisture content in glycol-based brake fluids
- Easy to read LED gauge to indicate moisture level
- Ideal two-button use, one power button and another to change fluid types
- Self-test feature to ensure proper usage
- Battery auto-shut off feature
- Operates on 1-AAA Battery (included)



**BRAKE TOOLS - Hones**

**762 Sub-Compact Brake Cylinder Hone**

Recommended for cylinder bores 1/2" to 2-1/4" (13mm-57mm) diameters.

- Offers fast easy cutting with high or low speed drills
- Self-aligning and self-centering
- Flex joint drive with adjustable tension

**Includes:**

(2) 1-1/8" (29mm) medium, 220-240 grit stones

Replacement Stones:

**763, Replacement Stones**

1-1/8" (29mm), medium, 220-240 grit



**357 Disc Brake & Small Engine Hone**

- Adjustable tension flex shaft hone for 1-1/4" to 3-1/2" (32mm-89mm) diameter cylinders
- Use on most compact cars, as well as, cycles, lawnmowers, and outboard motors
- Includes three, 2" (51mm) Medium grit stones
- To hone disc brake cylinders larger than 1-1/4" (32mm), Order No, 358-1 Fine Grit Stones (Not included)

**Replacement Stones:**

**357-1**, medium, 220-240 grit (set of three)

**357-3**, 2-in. (51mm) fine, 400 grit (set of three)



**358 Disc Brake & Caliper Hone**

- Equipped with special size Fine Grit Stones to hone disc brake calipers providing that the diameter of the bore is not increased over .002"(.5mm)
- Adjustable tension, capacity 3/4" to 2 1/2"(19mm-64mm)
- Includes three 3/4"(19mm) Fine Grit Stones

**Replacement Stones:**

**358-1**, 3/4" (19mm) fine, 400 grit (set of three)



*Category continued on the next page >>>*



### **362 Adjustable Brake Cylinder Hone**

A full-range hone set covering sizes from 3/4" to 2-1/2" (19mm-64mm).

- Knurled nut controls tension for honing, deglazing throughout full range
- Hones clear to end in step-cut and blind end cylinders
- Flexible shaft for easy use right on car
- Includes three 1-1/8" (29mm) Medium Grit Stones

#### **Replacement hones:**

**363**, medium, 220-240 grit (set of three)

**363-01**, fine, 400 grit (set of three)

**363-02**, coarse, 100 grit (set of three)



### **33000 Multi-Hone Set**

A complete set of hones providing honing tools ranging from brake cylinders, to small engines, even automotive engine applications

#### **Set includes:**

Three complete hones with 1-1/8" stone length and a set of 2" long hones

- Hone for 3/4" - 2-1/2", for brake master cylinders wheel brake cylinders
- Hone for 1/2" - 1-3/4", for small auto brake wheel cylinders
- Hone for 1 1/4" - 3-1/2", for disc brake caliper and lawn and garden applications
- 2"-long medium grit stones for small engine cylinders



### **855 Brake Bleeder Tank**

- Safe, light weight and easy to use
- Portable tank fills and bleeds both standard and power brakes in a single operation
- Tank is easily pressurized with just a few strokes of the built-in hand pump, eliminating the need for a compressor

#### **Includes:**

One (1) gallon capacity tank, extra-long hose, quick-connect coupler, shut off valve, and pressure gauge



### **24700 One Person Brake Bleeder Tool**

- Simple design for ease of use
- No springs, no diaphragms, no moving parts, no connections to leak, and no way air can re-enter the system once the brake pedal is released
- Instructions included



### **36700 2-In-1 S-Cam Brake Tool**

This tool offers technicians a more efficient method for changing brake shoes on nearly medium or heavy-duty, drum-style air brake setups.

- An S-shape portion, on the opposite end, enables the user to position the brake shoes in a way that allows leverage for installation of the rollers
- The hooked end forces the brake shoes apart for the rollers to be installed faster and more safely

**364 Parking Brake Tool**

Application requires a lower profile brake spring tool with more a longer reach. The user can put the tip of this tool through the access hole and engage the spring cup on 2000 and current Tacoma, Tundra, FJ Cruiser, 4Runner, Land Cruiser, and Camry.

- Specially designed tip to engage the shoe hold down spring cup on Toyota vehicles
- For use on 2000 and current Tacoma, Tundra, FJ Cruiser, 4Runner, Land Cruiser, and Camry Models

**TUBING FABRICATION - In-Line Flaring Tools****165 Master Flaring Tool Kit**

- This design aligns the adapters, cone, and tube to make perfect factory flares every time
- Clamp and set screws apply pressure directly over the tube, greatly reducing the chance of the tube slipping, while also increasing the durability of the tool
- Low-profile and compact design allows the user to make flares on the vehicle in tight spaces, such as along frame rails or the engine compartment, saving the user time from having to remove components or complete lines to make repairs

**For tubing with outer diameters:**

3/16", 1/4", 5/16", and 3/8" double and single flares  
4.75mm, 6mm, and 8mm double and bubble flares

**166 Hydraulic In-Line Flaring Tool**

Integrates hydraulic assist to create an easy to use, versatile kit. This time saving tool enables technicians to make perfect flares every time, even in tight access areas for on-car applications. It handles single, double, and bubble flares with the option to expand into quick connect fitting.

**Tubing Sizes:**

SAE: 3/16", 1/4", 5/16", and 3/8"

Metric: 4.75mm, 6mm, and 8mm

- Creates single, double and bubble flares with the option to expand into quick connect fittings
- Includes Constant Tension Tube Cutter

**154, 161, and 164 In-Line Flaring Tools**

These patented, low-profile sets are designed to enable users to make single or double flares with soft, thin walled steel or copper tubing anywhere, including tight spaces on the vehicle. They also enable the technician to use a ratchet or wrench for added torque when needed. The double-clamp and hex body keep tube from slipping, keeping flares centered.

- Low-profile design allows for use on or off the vehicle
- Designed to be used with a ratchet to make flares easier
- In-line design makes a more accurate flare
- Double clamp and hex screw design keep the tubing locked tightly in position
- For use on thin walled steel and copper tubing
- Available in SAE (164), Metric (154) and Auto-Specific Set (161)
- Patent Pending

**Contains:**

**154**, In-Line Flaring Tool Metric (Contain 4.75mm, 5mm, and 6mm)

**161**, In-Line Flaring Tool Auto-Specific Set (Contains only 3/16" and 4.75mm)

**164**, In-Line Flaring Tool SAE (Contains 3/16", 1/4", and 5/16")



## TUBING FABRICATION - In-Line Flaring Tools



### 160 Brake Line Flaring Tool

- Convenient handle to make brake line flaring easier
- Flares 3/16" and 4.75mm tubing for double flares

## TUBING FABRICATION - Basic Flaring Tools



### 153 Metric Double Flaring Tool

- Designed to withstand high pressures necessary to double-flare soft steel tubing as well as single-flare soft copper, aluminum, and brass tubing
- Set includes drop forged compressor yoke, 5 double-flare adapters and threaded die holding bar with size capacity 4.15mm, 5mm, 6mm, 8mm and 10mm. Blow molded case



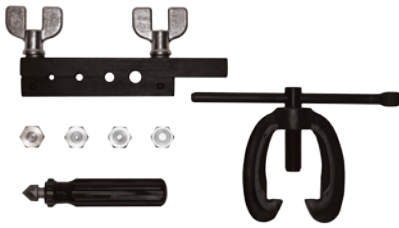
### 163 Double Flaring Tool

- This 45-degree double flaring tool set is designed to withstand the pressure necessary to double flare soft steel tubing, as well as single flare soft copper, aluminum, and brass tubing.

**Includes:**

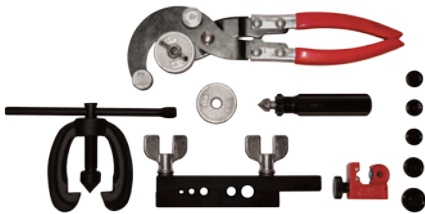
Five double flare adapters, drop forged compressor yoke, and bar assembly w/ size capacity- 3/16", 1/4", 5/16", 3/8", and 1/2"

## TUBING FABRICATION



### 82700 Metric Bubble Flaring Kit

- Forms Bubble Flares in soft steel and copper tubing
- Flares metric Hydraulic brake lines used foreign and domestic vehicles
- Works on 4.75mm, 6mm, 8mm, 10mm tubing
- Makes Bubble Flares in one operation
- Comes in a blow-molded case



### 82800 SAE Tube Flaring Kit

- Features all the tools a technician will need to properly fabricate SAE single and double flares on soft steel or copper tubing
- For 3/16", 1/4", 5/16", 3/8", and 1/2" outer diameter tubing
- Comes in a blow-molded case

**Contains:**

- (1) 163, Double Flaring Tool
- (1) 151, Mini Tube cutter
- (1) 758, Heavy Duty Tube Bender (plier-type)
- (1) Tubing reamer

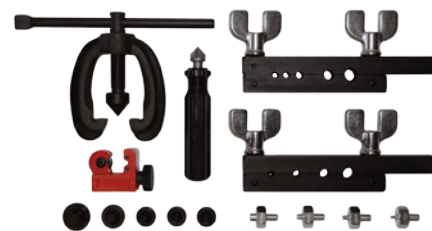


**82900 SAE and Metric Tube Flaring Kit**

- Features all the tools necessary to create single, double and bubble (metric only) flares on soft steel and copper tubing  
For SAE 3/16", 1/4", 5/16", 3/8", and 1/2"; metric sizes (bubble flares) 4.75mm, 6mm, 8mm, 10mm outer diameter tubing
- Comes in a blow-molded case

**Contains:**

- (1) **163**, Double Flaring Tool
- (1) **82700** Metric Bubble Flaring Tool
- (1) **151**, Mini Tube Cutter
- (1) Tubing Reamer



**TUBING FABRICATION - Tubing Cutting and Fabrication**

**151 Mini Tubing Cutter**

- Cuts soft and Copper tubing 1/8" to 5/8" in Diameter
- Alloy Steel cutting wheel



**159 Mini-Mini Constant Tube Cutter**

Utilizes springs to keep consistent compression on the cutting blade, allowing the user to cut through thin walled steel tubing without having to continually readjust the cutter and making the task of cutting through steel walled tubing faster and easier.

- 2" length allows tool to work effectively in tight spaces
- Handles the smallest tubing up to 5/8" tubing
- Same Length as the TC123C but with the added constant tension function
- Features a replaceable blade, **159-1** (order separately)



**157 Constant Pressure Tube Cutter (Tubing sizes from 3/16" to 7/8")**

Utilizes a spring to keep consistent compression on the cutting blade, allowing the user to cut through thin walled steel tubing without having to continually readjust the cutter.

Simply turn the adjustment handle until the alignment marks line up, then turn the cutter to until the tubing is cut. Makes the task of cutting through steel walled tubing faster and easier.

- Handles tubing sizes from 3/16" to 7/8" outer diameter
- Professional grade quality
- Features a replaceable blade, **157-600** (order separately)



**158 Large Constant Pressure Tube Cutter (Tubing sizes from 1/8" to 1-1/8")**

Utilizes a spring to keep consistent compression on the cutting blade, allowing the user to cut through thin walled steel tubing without having to continually readjust the cutter.

Simply turn the adjustment handle until the alignment marks line up, then turn the cutter to until the tubing is cut. Makes the task of cutting through steel walled tubing faster and easier.

- Handles tubing sizes from 1/8" to 1-1/8" outer diameter
- Professional grade quality
- Features a replaceable blade, **157-600** (order separately)



*Category continued on the next page >>>*

## TUBING FABRICATION - In-Line Flaring Tools



### 160 Brake Line Flaring Tool

- Convenient handle to make brake line flaring easier
- Flares 3/16" and 4.75mm tubing for double flares

## TUBING FABRICATION - Basic Flaring Tools



### 153 Metric Double Flaring Tool

- Designed to withstand high pressures necessary to double-flare soft steel tubing as well as single-flare soft copper, aluminum, and brass tubing
- Set includes drop forged compressor yoke, 5 double-flare adapters and threaded die holding bar with size capacity 4.15mm, 5mm, 6mm, 8mm and 10mm. Blow molded case



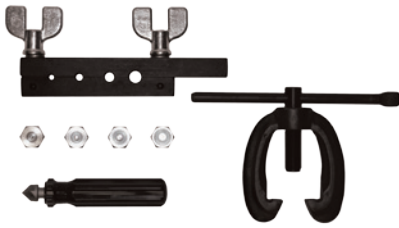
### 163 Double Flaring Tool

- This 45-degree double flaring tool set is designed to withstand the pressure necessary to double flare soft steel tubing, as well as single flare soft copper, aluminum, and brass tubing.

**Includes:**

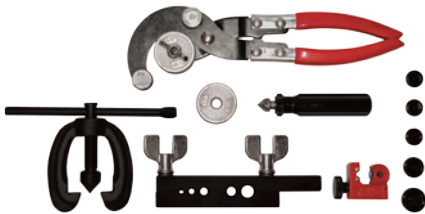
Five double flare adapters, drop forged compressor yoke, and bar assembly w/ size capacity- 3/16", 1/4", 5/16", 3/8", and 1/2"

## TUBING FABRICATION



### 82700 Metric Bubble Flaring Kit

- Forms Bubble Flares in soft steel and copper tubing
- Flares metric Hydraulic brake lines used foreign and domestic vehicles
- Works on 4.75mm, 6mm, 8mm, 10mm tubing
- Makes Bubble Flares in one operation
- Comes in a blow-molded case



### 82800 SAE Tube Flaring Kit

- Features all the tools a technician will need to properly fabricate SAE single and double flares on soft steel or copper tubing
- For 3/16", 1/4", 5/16", 3/8", and 1/2" outer diameter tubing
- Comes in a blow-molded case

**Contains:**

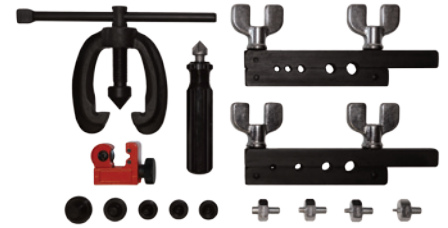
- (1) 163, Double Flaring Tool
- (1) 151, Mini Tube cutter
- (1) 758, Heavy Duty Tube Bender (plier-type)
- (1) Tubing reamer

**82900 SAE and Metric Tube Flaring Kit**

- Features all the tools necessary to create single, double and bubble (metric only) flares on soft steel and copper tubing  
For SAE 3/16", 1/4", 5/16", 3/8", and 1/4"; metric sizes (bubble flares) 4.75mm, 6mm, 8mm, 10mm outer diameter tubing
- Comes in a blow-molded case

**Contains:**

- (1) **163**, Double Flaring Tool
- (1) **82700** Metric Bubble Flaring Tool
- (1) **151**, Mini Tube Cutter
- (1) Tubing Reamer



**TUBING FABRICATION - Tubing Cutting and Fabrication**

**151 Mini Tubing Cutter**

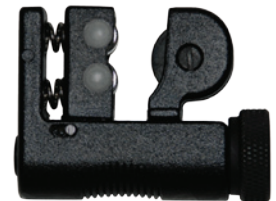
- Cuts soft and Copper tubing 1/8" to 5/8" in Diameter
- Alloy Steel cutting wheel



**159 Mini-Mini Constant Tube Cutter**

Utilizes springs to keep consistent compression on the cutting blade, allowing the user to cut through thin walled steel tubing without having to continually readjust the cutter and making the task of cutting through steel walled tubing faster and easier.

- 2" length allows tool to work effectively in tight spaces
- Handles the smallest tubing up to 5/8" tubing
- Same Length as the TC123C but with the added constant tension function
- Features a replaceable blade, **159-1** (order separately)



**157 Constant Pressure Tube Cutter (Tubing sizes from 3/16" to 7/8")**

Utilizes a spring to keep consistent compression on the cutting blade, allowing the user to cut through thin walled steel tubing without having to continually readjust the cutter.

Simply turn the adjustment handle until the alignment marks line up, then turn the cutter to until the tubing is cut. Makes the task of cutting through steel walled tubing faster and easier.

- Handles tubing sizes from 3/16" to 7/8" outer diameter
- Professional grade quality
- Features a replaceable blade, **157-600** (order separately)



**158 Large Constant Pressure Tube Cutter (Tubing sizes from 1/8" to 1-1/8")**

Utilizes a spring to keep consistent compression on the cutting blade, allowing the user to cut through thin walled steel tubing without having to continually readjust the cutter.

Simply turn the adjustment handle until the alignment marks line up, then turn the cutter to until the tubing is cut. Makes the task of cutting through steel walled tubing faster and easier.

- Handles tubing sizes from 1/8" to 1-1/8" outer diameter
- Professional grade quality
- Features a replaceable blade, **157-600** (order separately)



*Category continued on the next page >>>*



### 169 Double Deburr Tool

- Designed to work on both I.D. and O.D. of cut lines to remove burrs when performing secondary operations to tubes
- Constructed of an aluminum body and high-speed steel cutting edges to hold up in a shop environment
- Works on soft steel or copper tubing
- This two-in-one tool is easy to use and features a retractable blade for safe storage
- The tool has a working size range of 1/8" -1/2" (3mm-12mm)



### 758 Heavy-Duty Tubing Bender

- Bends 3/16", 1/4", 5/16", and 3/8" diameter copper and steel tubing
- Will not cause kinking or collapsing
- Includes two roller adapters



### 75902 Tube Bend Mirror Adaptors

- Adaptors are used to accurately recreate or make matched runs of brake lines often in complex configurations
- For steel, copper, and plastic-coated brake lines with diameters of 3/16" (4.75mm) or 1/4" (6.3mm)

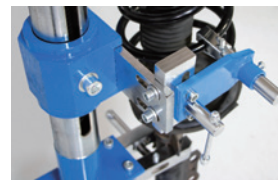
## SUSPENSION AND WHEEL - Suspension



### 91300 Floor-Mounted, 2,200 lbs. Spring Compressor

The heavy-duty construction and Adaptive Spring Bracket allow the user to single-handedly compress many of the strut assemblies found on passenger cars, light-trucks, vans, and SUV's.

- Adaptive Spring Bracket can be configured in multiple configurations
- For strut assemblies with spring coils 3.5" to 8.75" wide
- Accepts maximum spring height of 19"
- Can be used with varying coil diameters up to 5/8"
- Easy, one-person use
- Can be mounted to the floor (hardware not provided)



### 200 Torsion Bar Unload Tool

- For relieving tension from the torsion bar arm to remove the torsion bar
- Utilizes a larger C-frame design to increase the application range for more vehicles
- Includes an adapter for non-GM applications
- Heavy-duty construction
- Includes an adapter for using tool on non-GM applications

#### Applications:

1988 and up GMC and Chevrolet 1/2-ton, 3/4-ton and 1-ton trucks.  
2011 and up GM HD trucks, S-10 Blazers, S-15 Jimmys and 4WD trucks with 4.3L engines.  
GM K-3500 series with HD chassis, including GM 5-lug, 6-lug and 8-lug vehicles

**90200 Master Spring Compressor Set**

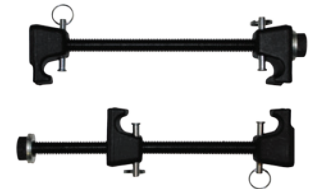
Featuring our two most popular spring compressors Master MacPherson Strut Tool and the Coil Spring Compressor, this set allows you to safely and easily compress nearly any automotive spring to replace shock absorbers, spring sets, repair bent struts or strut tubes and repair damaged spindles.

- Safely and easily compress many automotive strut/spring combinations
- Constructed of high-strength alloys for strength and durability
- MacPherson Strut Tool comes with safety hooks for added safety
- Comes in a blow-molded case



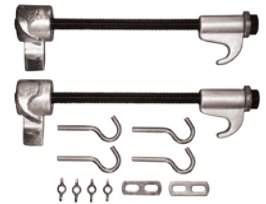
**513 Master Macpherson Strut Tool Set**

- The preferred tool of professionals when needing to quickly compress the coil spring to replace shock absorber, spring sets, repair bent strut or strut tube and repair damaged spindle
- Instructions and safety hooks included
- Not for use with impact tools



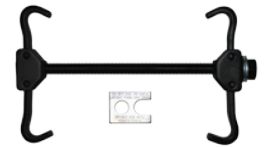
**512 Macpherson Strut Tool**

- Designed to be used on vehicles equipped with MacPherson Struts
- Allows user to quickly compress the coil spring to replace shock absorber, spring sets, repair bent strut or strut tube and repair damaged spindle
- Instructions and safety hooks included
- Not for use with impact tools



**510 Coil Spring Compressor**

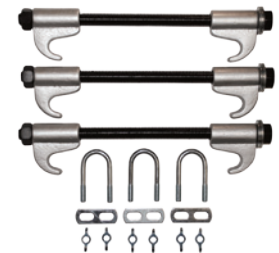
- Quickly and safely compress coil springs on many passenger cars and pick-up trucks
- Not for use with impact tools



**91000 Coil Spring Clamps**

This heavy-duty tool allows for easy removal or installation, where removal of spring through the center is not possible.

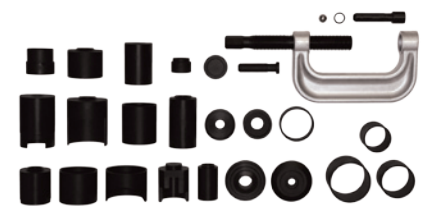
- Universal position clamps for a wide array of applications
- Tool comes with safety U-Bolts
- Not for use with impact tools



**SUSPENSION AND WHEEL - Front End and Steering**

**197 Ball Joint Super Set**

- Allows for the removal and installation of press-fit ball joints on many GM and Ford light-duty trucks, vans and SUVs through 2003; Dodge light trucks through 1998; Dodge vans, Durango and Dakota through 2003; and Honda Accord, Civic, del Sol, and Prelude through 2001
- C-frame tool can be used alone to remove and replace universal joints
- Comes complete in durable case



*Category continued on the next page >>>*



### 196 Ball Joint Removal and Installation Kit

- Removes and installs press-fit parts such as ball joints, universal joints, and truck brake anchor pins

#### Contains:

3 receiver tubes (2-3/4" I.D. x 3" O.D., 2-1/4" I.D. x 2-1/2" O.D., and 1-3/4" I.D. x 2" O.D.) Installation and removing adapters: 1 installing cup, and blow-molded case.



### 185 Front End-Service Kit

The Front-End Service Kit Includes five tools used in the servicing of ball joints, pitman arms, and tie rods on most vehicles.

- Large and small Pitman arm puller for ball Joint applications
- Three different tie rod pullers
- Two ball joint separators
- Comes in a durable blow-molded case



### 182 Tie Rod End Tool

- Use to force out tie rod ends from spindles and steering arms on virtually all domestic and import cars with tie rod screw diameter up to 3/4"
- Swivel head with a cup-style end removes the chance of damage and frustration caused by other less effective methods like hammering
- Opens to 1-5/8", for larger jobs use our 188 or 194 tie rod pullers



### 184 Ball Joint Separator

- Use to separate ball joints from the spindle
- Threaded force screw allows the tool to be used on different size ball joints
- For on virtually and domestic and import vehicles



### 186 Pitman Arm Puller

- Heavy-duty tool designed to remove pitman arms from late-model cars and light trucks
- Yoke is forged from high grade alloy steel and heat-treated
- 1-5/16" opening, 2-1/2" pull



### 188 Outer Tie Rod Puller

- Our most versatile puller can be used on a wide array of tie rod ends and ball joints, from cars to light trucks with various styles of steering knuckles
- Specially designed jaws and cup-style end on the force screw removes the chance of damage caused by other less effective methods like hammering
- This tool has a working range of 4" of spread and a reach of 3-5/8"



### 194 Tie Rod End Puller

- Can be used to remove both tie rod ends and pitman arms on many cars and light trucks
- Cap screw has a 5/8" square drive socket
- 2-1/4" of pull travel and over an inch of jaw opening

### 504 Bushing Driver Set

- Remove or install bushings from 3/8" to 1-3/8" in diameter found many in cars, trucks, tractors, construction equipment, electric motors, and many other components containing bushings
- Includes bushing adapters ranging from 3/8" to 1-3/8", large, medium, and small driver handles



### 946 Inner Tie Rod Removal Tool

- Turns smooth tie rods easily
- Simply slide tool over the end and tighten collar to allow access with an extension
- Can remove Inner tie rod without removing the outer tie rod
- No more bulky tools to store
- Inexpensive and effective way to turn these smooth tie rod ends



### 947 Heavy-Duty Inner Tie Rod Wrench

- Works to remove multiple inner tie rods of cars, light trucks, and SUV's, including the hex tubes, round tubes with flats, and round tubes with no flats, without having to completely remove the tie rod assembly
- Accepts larger tie rod tubes than most other similarly designed tools, ranging from 25mm-55mm
- Fixed position rings provide added strength and durability
- Designed to use in limited access areas
- Patented, force-multiplying cam design



## SUSPENSION AND WHEEL - Wheel and Hub

### 839 6-Piece 4WD Locknut Socket Set

This high-quality steel, six-piece socket set features 1/2" square drives that enable technicians to use ratchets, breaker bars and torque wrenches in their applications.

#### Includes:

- 4-lug socket
- 6-lug socket
- Toyota, 4-lug lock nut socket
- Ford, 4-lug lock nut socket
- FWD front spindle puller
- Comes in a durable blow-molded case



### 966 8-Piece, 6-Point Axle Nut Socket Set

- Features eight 1/2", 6-point, deep alloy sockets ideal for use in removing and installing axle nuts on a wide variety of domestic and import cars, trucks and SUV's
- The extra-long design ensures complete contact between the nut and socket and prevents slipping or distortion of the axle nuts during application
- Sizes: 29mm, 30mm, 32mm, 34mm, 35mm, 36mm, 38mm, and 39mm
- Comes in a durable blow-molded case



Category continued on the next page >>>



### 976 8-Piece, 12-Point Metric Axle Nut Socket Set

- Features eight heavy-duty metric sockets that fit axle nuts and automatic transmission tail output shafts on Toyota, Lexus, Chrysler, Dodge, Jeep, Audi, Volkswagen, and BMW, as well as many other makes
- Sizes: 29mm, 30mm, 32mm, 34mm, 35mm, 36mm, 38mm, and 39mm
- Comes in a durable blow-molded case



### 90703 Dodge Hub Nut Socket

Fits rear axle locknuts of 2006-2014 Dodge/Ram trucks with six holes. Use this tool when removing and installing rear hubs and eliminate the struggles and potential damage caused by other methods.

- 2006-2014 Dodge®/Ram® 1500-5500 models
- Reduces damage to components
- Great tool to use when torquing rear wheel bearings
- Heavy-duty one-piece construction with rust resistant finish
- Utilizes a 3/8" square drive
- Direct comparison to Mopar® P/N: 8954A



### 977 Toyota Front Hub Nut Socket

Designed to fit lock nuts on 2007 and up 2WD Toyota 4 Runners and Tundra (2008-2014 Sequoia) 8-Pin design with 3/4" female square drive

- Comparable to Toyota Factory tool #09318-12010-8Pin and 09602-60010
- Allows easy removal and installation on front hub locknut without damage to the nut
- Removal and installation of front hub locknuts for specific Toyota vehicles



### 90700 2-in-1 Dodge and Ford Hub Removal Tool

This 2-in-1 tool allows you to quickly and effortlessly free front wheel hubs of Dodge and Ford trucks with the force provided by vehicle's the power steering, without damage to expensive assemblies and other possible components. Put together, this tool is applicable to Ford F250 and F350 trucks. Remove the adapter, the tool is now ready for Dodge 2500 and 3500 trucks. No other hub removal tool provides multi-vehicle applications.

- Reduces the time it takes to complete front-end related jobs such as hub removal, replacing axle shafts, U-joint and axle seals
- Combination of the Dodge Hub Removal Tool and Ford Hub Removal Adapter
- Quickly adapts for Ford and Dodge applications
- Ford adapter has an integral ring for protection of the stud threads
- Uses the force of the power steering system to loosen the hub assembly, instead of having to use other methods which can possibly damage the hub assembly



### 90701 Dodge Hub Removal Tool

Uses the force from the vehicle's power steering system to easily free the front wheel hubs, without damaging the hub or other components.

- Designed to remove the front hubs of 3/4-ton (2500) and 1-ton (3500) Dodge trucks
- Reduces the time it takes to complete front-end related jobs such as hub removal, replacing axle shafts, U-joint and axle seals
- Replaces the 90300



**90702 Ford Hub Remover Adapter**

This adapter is used to convert our Dodge Hub Removal Tool for use on Ford truck applications, to easily free the front wheel hubs, and without damaging the hub or other components.

- Designed to remove the front hubs of 3/4-ton (F-250) and 1-ton (F-350) Ford trucks
- Reduces the time it takes to complete front-end related jobs such as hub removal, replacing axle shafts, U-joint and axle seals
- Cannot be used on its own



**904 Wheel Bearing Tool**

- Replace wheel bearings on front-wheel drive cars and light trucks, without having to remove the steering knuckle and strut assembly
- Eliminates the need for a front-end alignment once completed



**94800 Hub Puller**

- Removes wheel hubs mounted on tapered axles and press fit rear brake drums
- Can be adjusted by legs to an 8-in. diameter bolt circle
- Heavy-duty construction, made of alloy steel and drop forged
- Center screw 1-14" x 9" with a 1-1/8" hex head



**526 Flange Type Axle & Front Wheel Hub Puller**

- For use on domestic and import cars and light trucks
- Range is 3 3/4" to 4 1/2"
- For use on 4, 5, or 6 bolt stud design and all non-C Lock GM axles
- May be used with Cal-Van 498, Flange Type Puller



**332 Hub Resurfacing Kit**

Works with a power drill to quickly remove rust from studs, rotors, and hub surface on nearly any vehicle.

- Complete with a holder and five sanding discs
- Quick-connect sanding pads
- For best results, the device should be operated at speeds of 10,000 rpm or less



**75510 16-Piece Master Wheel Locking Nut Key Set**

Locking lug nuts are a great deterrent of wheel theft, but for mechanics, they can quickly make an easy job more difficult. This set makes removing wheel locks simple. This set consists of 8 internally splined bits along with 8 hex and star bits.

- Designed for removing many OEM and aftermarket specific locking wheel lug nuts
- Reduces chances of damaging lug nuts or wheels
- Chrome-vanadium construction and rust-resistant, black oxide finish
- Contains eight inner-splined keys and eight outer-splined keys
- All organized in a blow-molded case

**Inner-splined sizes:**

5-spline Short 5/8", 6-spline 41/64", 6-spline 45/64", 7-spline Medium 5/8", 7-spline Short 11/16", 7-spline Long 3/4", 12-spline 11/16", and 12-spline 13/16"

**Outer-splined sizes:**

8-pt Star 7/16", 8-pt Star Lug 5/8", 9-pt Star Lugs 1/2", 10-pt Star Lug 1/2", Fluted Hex 12mm Outer, Hex Lug 12mm, Hex Lug 15mm, and Hex Lug 9/16"



*Category continued on the next page >>>*



### 16 Quick-Change Wheel Stud Cleaner Kit

- Allows for quick and easy stud cleaning
- Snap-lock heads can easily be interchanged to fit the user's needs
- Includes hex bit to 1/2" drive adapter
- Designed to be used with a cordless drill

## GENERAL HAND TOOLS - Ratchet and Wrenches



### 906 Finger Bit Driver

- Convenient tool allows access into the tightest of areas
- Heavy-duty mini driver uses 1/4" square drive, 1/4" hex bits
- Generates substantial torque and comes in bright easy to identify colors
- Available in 20 (90620) & 30 (90630) Piece Merchandise



### 90620, 90630 Finger Bit Driver Merchandisers

- Allows access into tight areas using 1/4" and 3/8" sockets
- Diamond knurled design for grip

90620, Finger Bit Driver Merchandiser - 20 piece

90630, Finger Bit Driver Merchandiser - 30 piece



### 100 Master Finger Bit Driver Set

- Includes some of the most popular finger bit drivers available
- Low profile for access to tight areas
- Knurled bodies for sure grip



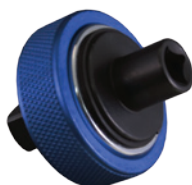
### 104-03 Finger Socket Driver 3-Pack

- Allows access into tight areas using 1/4" and 3/8" sockets
- Diamond knurl design for positive grip
- Includes: (1) 102, 3/8" male - 1/4" female, (1) 103, 1/4" male - 3/8" female, (1) 3/8" male - 3/8" female



### 108-BLUE 1/4" Mini Finger Ratchet

- Small size great for tight areas
- Reversible finger ratchet with aluminum knurled outer ring for sure grip
- 1/4" Drive on one side and 1/4" Hex Drive on other side



### 109-BLUE 3/8" Finger Mini Ratchet Drive

- Small size great for tight areas
- Reversible finger ratchet with aluminum knurled outer ring for sure grip
- 1/4" Drive on one side and 1/4" Hex Drive on other side

**450 Tight Access Drive Wrench**

A gear-driven metric wrench set solution for accessing difficult to reach areas, where a box type wrench would not be practical.

- Dramatically reduces the time needed to remove fasteners in awkward areas
- Comes in a set of 5 (10mm, 12mm, 13mm, 14mm, 15mm)
- Includes 3/8" drive socket adapter
- Patented



**480 1/2" Drive Breaker Bar**

- Removes wheel hubs mounted on tapered axles and press fit rear brake drums
- Can be adjusted by legs to an 8-in. diameter bolt circle
- Heavy-duty construction, made of alloy steel and drop forged
- Center screw 1-14" x 9" with a 1-1/8" hex head



**668 Pistol Grip LED Lighted Screwdriver**

- Screwdriver can either be a straight-grip or pistol-grip screwdriver
- Removable shank for use with other drivers
- LED light on handle for dark areas
- Bits stored in handle
- Professional quality, high-torque screwdriver



**GENERAL HAND TOOLS - Ratchet Accessories**

**482 90-Degree Gearless Angle Drive (1/4")**

- Allows access to hard to reach areas
- Replaces hard to use universal adapters
- Exceeds ANSI specs torque max for universal socket adapters
- Patented



**483 90 Degree Gearless Angle Drive (3/8")**

- Allows access to hard to reach areas
- Replaces hard to use universal adapters
- Exceeds ANSI specs torque max for universal socket adapters
- Patented



**485 45-Degree Gearless Angle Drive (1/4")**

- Allows access to hard to reach areas
- Replaces hard to use universal adapters
- Exceeds ANSI specs torque max for universal socket adapters



**487 Drive Adapter Set**

- Transform ratchets and other drive tools, like air ratchets, to use for multiple drive-size sockets
- Durable, impact-rated

**Set of drive adapters that step:**

1/4" to 3/8"

3/8" to 1/2"

1/2" to 3/4"



*Category continued on the next page >>>*



### **488 Twin Spin Converter (1/4"-3/8")**

- Allows use of a 1/4" drive socket with a 3/8" drive ratchet and vice versa
- Can withstand higher torque than traditional adapters
- Can be used as a small extension or hand drive for tight access
- Patented



### **489 Twin Spin Drive Converters (3/8"-1/2")**

- Allows use of a 3/8" drive socket with a 1/2" ratchet and vice versa
- Can withstand higher torque than traditional adapters
- Can be used as a small extension or hand drive for tight access
- Patented



### **490 Versa-Drive (2-in-1 Adapters)**

When used in conjunction with 1/4" hex drive tools like impact drivers or 1/4" drill chucks, the Versa-Drive is a real time saver in a variety of applications.

- 1/4" Hex shank adapters
- Enables users to easily switch between sockets and hex bits
- Impact rated for use in 1/4" cordless and pneumatic impact drivers
- For torques up to 167 ft/lbs. or 2,000 in/lbs.

#### **Contains:**

**491**, 3/8" Drive adapter with 1/4" hex for bits

**492**, 1/2" Drive adapter with 5/16" hex for bits



### **48100 Master Ratchet Accessory Set**

- Includes some of the most popular items available from Cal-Van
- Everything needed to get into tight access areas, around corners, and adapt sockets to step up and down

#### **Set Includes:**

Two Gearless Angle Drives, two Twin-Spin Converters and one Finger Bit Driver w/bits



### **47 Light Bulb Pliers**

- Remove and install small automotive bulbs with ease
- Gently yet firmly grips small bulbs with rubber coated tips
- Extended reach for recessed, corroded, and broken bulbs
- Scissor design with cushioned grip for easy handling



### **52 Oetiker Clamp Pliers**

- For use with Oetiker and other crimp-style clamps
- Two-step function allows user to properly position clamp before tightening
- Innovative head design requires less effort than other versions
- Integrated handle stop ensures proper clamping each time

**54 Adjustable Indexing Trim Clip Pliers**

- Removes plastic trim anchors with center pins without damage to the pin or anchor
- Adjustable head that can be angled when needing to access tight, hard to reach areas
- Allows for one-handed use and keeps the components intact by engaging two sides at once
- Steel construction for strength and durability and double-dipped cushioned and textured handles for increased grip



**58 45-Degree Hose Clamp Pliers**

- Special tip designed to grip almost any hose clamp from any direction
- Offset angle design for hard to reach applications and ease of use
- Locking, ratcheted jaws enable user to keep pliers locked on to clamps
- 11" Overall length, extra-long reach



**59 Hose Clamp Pliers**

- Special tip designed to grip almost any hose clamp from any direction
- Locking ratcheted jaws enable user to keep pliers locked onto clamps
- 11" overall length, extra-long reach



**1016 Snap Ring Pliers Set**

- Features fixed-tip pliers easily converted for external to internal use
- Comfortable, ergonomic handle grips
- Constructed of heat-treated steel for maximum strength and reliability
- Made up of straight and angled tips

**Set includes:**

- 1017, .038 straight pliers
- 1018, .038 45-degree pliers
- 1019, .038 90-degree pliers
- 1020, .047 straight pliers
- 1021, .047 45-degree pliers
- 1022, .047 90-degree pliers
- 1023, .070 straight pliers
- 1024, .070 45-degree pliers
- 1025, .070 90-degree pliers
- 1026, .090 straight pliers
- 1027, .090 45-degree pliers
- 1028, .090 90-degree pliers



**48 Offset Snap Ring Pliers**

- Strong enough to remove U-joint snap rings and still have the precision for delicate plastic clips on interior and body panels
- 75-degree offset configuration allows for greater access to narrow and hard to reach areas
- Ergonomic handle design



**49 Snap Ring Pliers**

- Strong enough to remove U-joint snap rings and still have the precision for delicate plastic clips on interior and body panels
- Ergonomic handle design



Category continued on the next page >>>



**16000 Radiator Hose Pinch Off Pliers**

- Service the coolant system without having to drain fluid from the cooling system
- Clamps heater or radiator hoses shut and jaws swivel for parallel force
- Automatic, locking ratchet
- May also be used to pinch off vacuum lines and fuel lines
- Not for use on wire reinforced radiator hoses (see 16500)



**16500 Heavy Duty Pinch Off Pliers**

- For use with wire reinforced radiator hoses
- Eliminates the need to drain systems when servicing cooling systems
- Clamps heater or radiator hoses shut and jaws swivel for parallel force
- Automatic, locking ratchet
- May also be used to pinch off vacuum lines and fuel lines



**934 52-Piece Torx Bit Set**

This ultimate Torx® collection includes Torx® bit sockets, Torx Plus® bits sockets, tamper-resistant Torx® bits, and Torx® socket for external bolts for use on most makes of cars and trucks, as well as many industrial, commercial and DIY applications

- Bits made from S2 steel to meet or exceed torque specifications
- Two-piece design more durable than a single piece for long life
- Torx® licensed

**Contains the following:**

Torx® sockets (E):

1/4" drive: E4, E5, E6, E7, E8 - 3/8" drive: E10, E12, E14, E16 - 1/2" drive: E18, E20, E22, E24

Torx® bits (T):

1/4" drive: T6, T8, T10, T15, T20, T25, T27, T30 - 3/8" drive: T40, T45, T47, T50, T55 - 1/2" drive: T60, T70.

Tamper-resistant Torx® bit (H):

1/4" drive: T8H, T10H, T15H, T20H, T25H, T27H, T30H - 3/8" drive: T40H, T45H, T50H, T55H - 1/2" drive: T60H

Torx Plus® Bit (TP):

1/4" drive: 8TP, 10TP, 15TP, 20TP, 25TP, 27TP, 30TP - 3/8" drive: 40TP, 45TP, 50TP, 55TP - 1/2" drive: 60TP



**933 Master Torx Bit Set**

- Complete set provides the most torque for all applications
- Bits composed of S2 Phosphate Manganese
- Comes in blow molded case for easy storage.
- Includes: Torx Bits: T-10, T-15, T-20, T-25, T-27, T-30, T-40, T-45, T-47, T-50, T-55. Tamper-Proof: T-10, T-15, T-20, T-25, T-27, T-30, T-40, T-45, T-50, T-55. Torx Sockets: E5, E6, E7, E8, E10, E12, E14, E16, E18, E20 (available separately)

**Also Includes:** 1/4" bit holder, 3/8" bit holder, 488 Twin Spin Drive Converter, and 906 Finger Bit Driver



**932 Torx Socket Set with Holder (Internal)**

- Twelve of the most popular Torx bits are conveniently assembled in a vinyl holder

**Includes (available separately):** T-10, T-15, T-20, T-25, T-27, T-30, T-40, T-45, T-47, T-50, T-60, and T-55

**912 Extra-Long Torx Screwdriver Set**

- Long shaft for hard to reach areas, 15-3/4" length
- Made of S-2 steel for strength

**Set Includes:** T-10, T-15, T-20, T-25, T-27, and T-30



**917 Tamper-Proof Extra-Long Torx Screwdriver Set**

- Long shaft for hard to reach areas, 15-3/4" length
- Made of S-2 steel for strength

**Set Includes:** T-10, T-15, T-20, T-25, T-27, and T-30



**935 4-Piece Mortorq Set with Storage Rail**

- Fits commonly used GM, Nissan and Mazda seat track and transmission bell housing bolts
- Used for differentials, door panels, suspension components and restraint systems

**Set includes:** #0, #1, #2, #3, #4



**GENERAL HAND TOOLS - Damaged Fasteners**

**342 Stripped Hex Bolt Removers, SAE**

- Perfect for removing stripped out hex screws
- Reverse twist of the hex key allows for easy removal of stripped hex screws
- Full range to remove most common SAE sizes
- Also available in metric



**343 Stripped Hex Bolt Removers, Metric**

- Perfect for removing stripped out hex screws
- Reverse twist of the hex key allows for easy removal of stripped hex screws
- Full range to remove most common metric sizes
- Also available in metric SAE



**439 Stripped Hex Screw Set (Metric)-9 Pc Set**

Used for removing rounded or stripped fasteners with internal drive heads.

- Can be used on new screws as well
- Reverse twist in the hex key bites into stripped out hex for easy removal

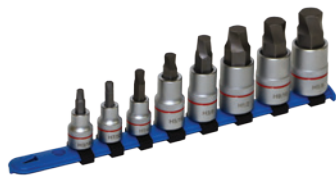
**Sizes:**

3/8" drive: 4mm, 5mm, 6mm, and 7mm

1/2" drive: 8mm, 10mm, 12mm, 14mm, 17mm



*Category continued on the next page >>>*



### 440 Stripped Hex Screw Set (SAE)-8 Pc Set

Used for removing rounded or stripped fasteners with internal drive heads.

- Can be used on new screws as well
- Reverse twist in the hex key bites into stripped out hex for easy removal

#### Sizes:

3/8" drive: 3/16", 7/32", 1/4"

1/2" drive: 5/16", 3/8", 1/2", 9/16", 5/8"



### 438 Spiral Screw Extractor Set

- Forged alloy steel, this spiral style extractor can be used to extract broken studs or screws
- Correct drill size for hole in part to be extracted is indicated on the tool

#### Available as individuals:

431, for removing screws shank 3/16"

432, for removing screws shank 1/4"

433, for removing screws shank 5/16"

434, for removing screws shank 7/16"



### 441 Fluted Screw Extractor Set

- Used to extract broken studs, screws, pipe, and pipe fittings
- Steel alloy with gradual taper and long flutes

#### Available as individuals:

441-1, screw/stud/bolt 1/4" and 5/16"

441-2, screw/stud/bolt 3/8"

441-3, screw/stud/bolt 7/16"

441-4, screw/stud/bolt 1/2" and 9/16"

441-5, screw/stud/bolt 5/8"

## GENERAL HAND TOOLS - Inspection and Pick Up Tools



### 21 4-Piece 9-3/4" Hook and Pick Set

- Use to remove O-rings, wadding, springs, gaskets, etc.
- Retrieve items from tight or hard to reach areas
- High carbon steel picks that are heat-treated and polished
- Cushioned and textured handle handles for comfort and increased grip
- Use to mark plastic or metal surfaces



### 22 6-Piece Hook and Pick Set

- Use to remove O-rings, wadding, springs, gaskets, etc.
- Retrieve items from tight or hard to reach areas
- High carbon steel picks that are heat-treated and polished
- Cushioned and textured handle handles for comfort and increased grip
- Use to mark plastic or metal surfaces



### 23 Telescoping Pick Up Tool with 16 lbs. Capacity

- Use to retrieve items from hard-to-reach areas
- Magnetic head with shield to keep from sticking to surfaces and debris
- Closed the unit is 6-1/2" and the stainless-steel handle extends up to 37"
- Features an ergonomic, textured grip



**25 Telescoping 2" Round Inspection Mirror**

- 2-1/4" (57mm) round mirror
- Double ball joint allows mirror to swivel freely 360-degrees yet hold a desired position
- 7" insulated handle extends to 12"
- 17" overall length.



**27 Telescoping Inspection Mirror**

- 2" x 3 1/2" (51mm-89mm) rectangular mirror
- Double ball joint allows mirror to swivel freely 360 degrees yet hold a desired position
- 7" insulated handle extends to 12"
- 17" overall length



**30 Magnetic Pick-Up Tool with 2-1/2 lbs. Capacity**

- Use to retrieve items from hard-to-reach areas
- Sliding cap shield to keep from sticking to surfaces and debris
- Closed the unit is 5-1/2" and the stainless-steel handle extends up to 25-1/2"
- Features an ergonomic, textured grip



**32 2-3/8" LED Lighted Inspection Mirror**

- Mirror head swivels to nearly 360° to inspect hidden and hard to reach areas
- LED lighted head illuminates dark recesses
- Ball-joint connection is sturdy enough to hold the head at any angle
- Closed the unit is 6-1/2" and the stainless-steel handle extends up to 37"
- Features an ergonomic, textured grip
- Batteries included (2 – CR2016)



**33 Magnetic Pick-Up Tool and LED Pen Light**

- Use to retrieve items from hard-to-reach areas
- Durable aluminum body and LED flashlight
- Closed the unit is 7-1/4" and the stainless-steel handle extends up to 27-1/4"
- Features a convenient pocket clip
- Batteries included (4 – LR41)



**35 Rectangular Inspection Mirror with Rotating LED Light**

- Mirror head swivels to nearly 360° to inspect hidden and hard to reach areas
- ABS plastic shroud with dual LED lights to illuminate dim or dark areas for improved visibility
- Ball-joint connection is sturdy enough to hold the head at any angle
- Closed the unit is 6-3/4" and the stainless-steel handle extends up to 30"
- Features an ergonomic, textured grip
- Batteries included (2 – CR2032)



**39 O-Ring Hook and Pick**

- Dual pick design is ideal to remove O-rings, small oil seals, etc.
- Retrieve items from tight or hard to reach areas
- Ideal for transmissions, hydraulic pumps, and A/C repairs
- Knurled handles for increased grip
- Use to etch or scribe soft metal or plastic surfaces



Category continued on the next page >>>



### 226 Adjustable Magnetic Pickup Tool

- Magnet tool telescopes to 16" and will open to a full 27-1/2"
- Designed with a hex rod to eliminate potential for head to rotate under pressure
- Will easily pick up 1.5 lbs



### 287 Telescoping Magnetic Pickup Tool

- Pocket size magnet tool extends from 5-1/4" to 17-1/2"
- Complete with pocket clip
- Lifting capacity over 2 lbs.



### 627 Hook Scribe

- Two-point scribing tool has one (1) straight and one (1) bent point.
- Hardened points screw into a knurled steel body
- 8-1/4" overall length

## GENERAL HAND TOOLS - General Tools



### 119 Magnetic Bit Rail

- 28-bit holder- holds 1/4" and 5/16" bits
- Magnetic backing attaches to toolbox or other surface for convenience
- Securely holds bits, bit sizes easily identified



### 264 Parts Cleaning Brush

- For heavy duty cleaning of metal and masonry surfaces
- 6-in. brush length with 14" overall length



### 351 All Purpose Awl

- Heavy duty tool for aligning work, scribing, and punching.
- Heat treated shank 1/4" x 4-3/4"



### 353 Denailer

The special recesses end allow user to force objects through and out of the tire, clearing the puncture for repair.

- Recessed end to engage the puncturing object
- 3" shaft, 6-1/2" overall length
- 5/16" point diameter

**764 Exhaust Tail Pipe Cutter**

- Comprised of thirteen large diameter (19mm) cutting wheels cut deep into exhaust pipes
- Cuts pipe from 3/4" to 3-1/4" (19mm-83mm) in diameter
- Will Not leave burrs
- Ideal for heavier gauge exhaust pipes
- Only 1/4 turn needed to cut
- Works well in hard to reach places



**767 Ratcheting Tubing PVC Cutter**

- Cuts industrial air hose, multi-purpose hose, heater and washer hose vacuum hose, non-metallic fuel line hose, PVC pipe, battery cables, and non-metallic air brake hose, up to 1 1/2" in diameter
- Features a quick release mechanism to quickly and easily open pliers for use
- Ratcheting action makes cutting easy
- Also features a locking mechanism for safe storage



**878 Ratcheting Chain Wrench**

- Chain wrench can be used on any object with a diameter from 5/8" to 5"



**PAINT, BODY, SCRAPERS, AND KNIVES - Trim and Upholstery Tools**

**112 3-Piece Non-Marring Pick Set**

- Access difficult to reach panels, remove O-rings, clips, small seals, and gaskets
- Diverse applications ranging from interiors to engines and transmissions
- Will not damage delicate, polished, or painted surfaces
- The ideal tool for intricate jobs



**113 5-PC. Trim and Panel Clip Tool Set**

- Ideal tool set for removing plastic fasteners, plastic clips for upholstery or panels
- Five different offsets with a range of three spreads (5mm, 7.5mm and 11mm)
- High-polish chrome finish and rubberized handles for additional grip
- Includes a foam storage tray

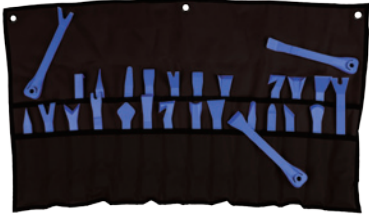


**114 3-Piece XL Clip Lifter Set**

- Designed for the most difficult to access clips and stubborn panels.
- Great for removing plastic fasteners, clips, and retainers often encountered when working with interiors and body panels
- Three different offsets and two spreads (5mm and 11mm)
- High-polish chrome finish and ergonomic rubber handles



*Category continued on the next page >>>*



**115 27-PC Trim Tool Set**

- For removing various trim fasteners, moldings, and wheel covers
- Removes adhesives from delicate surfaces
- Made from durable plastic to prevent unwanted damage
- Can be used to remove internal and external panels and fasteners
- Heavy-duty cloth roll-up case



**116 3-PC. Mini Pry Bar Set**

- Excellent, lightweight tool for small or delicate jobs
- Durable plastic construction eliminates unwanted damage to paint or trim
- Diverse applications, from interior to engine



**117 5-PC. Trim Fastener & Molding Remover Set**

- Five different sizes and styles of tools that allow easy removal of trim fasteners, moldings, and wheel covers
- Made of high strength, durable plastic to prevent damage to trim, moldings, alloy wheels or vehicle paint
- Can be used on trim fasteners and moldings inside, or outside, the vehicle



**118 11-PC. Trim Tool Kit**

- Eleven different sizes and styles of tools that allow easy removal of trim fasteners, moldings, and wheel covers
- Made of high strength, durable plastic to prevent damage to trim, moldings, alloy wheels or vehicle paint
- Can be used on trim fasteners and moldings inside, or outside, the vehicle



**125 Upholstery Tool Set**

- Features polished Stainless-steel Blades
- Includes 2 V-notch and U-notch tools and reverse-U door panel tool
- Made of high strength, durable plastic to prevent damage to trim, moldings, alloy wheels or vehicle paint



**55 Body Clip Pliers**

- Specially designed pliers will remove any clip found on trim, bumpers, etc.
- Steel levers enclosed in PMS plastic to prevent scratches
- The unique tip angle and size that make these the most versatile clip pliers on the market
- Patent pending



**56 Recessed Body Clip Pliers**

- Designed with the ability to remove push pins and body clips from bumpers and other areas of the vehicle that are recessed or have limited access
- Features a long reach with specially designed ends that help remove clip without damaging the clip with twisting or prying

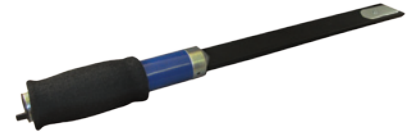
**17 24" Urethane Cut Out Knife**

- Windshield tool is made of rigid aluminum that will not flex
- Composed of a centered blade, so tool can be used from either side
- The securing screws are flush mounted prevent inadvertent dash and molding damage



**26 18" Urethane Cut Out Knife**

- This heavy-duty windshield knife gives that extra reach to cut hardened urethane down to the dash line
- Constructed of heavy-duty steel and aluminum, and has a padded ergonomic handle
- 18" overall length.
- Replacement blades: **536-1**



**136 4-PC. Putty Knife Scraper Set**

- Heavy-duty stainless steel, precision ground and polished
- Blades taper at tip to provide great flexibility and blade action
- Ergonomic, two-component plastic handles provide a non-slip grip
- Packaged in a storage tray. Professional quality set



**536 Monster Knife**

- Extra-large grip for added control
- Dual-material handle for a sure grip
- Equipped with a "Quick-Change Blade System"
- Available in 4-pack merchandisers.
- Replacement blades: **536-1**



**536-4 Monster Knife 4-Pack Merchandiser**

- Includes four Monster Knives
- Extra-large grip for added control
- Dual-material handle for a sure grip
- Equipped with a "Quick-Change Blade System"
- Replacement blades: **536-1**



**701 Mini Scraper**

Handy pocket-sized mini scraper is ideal for detail and body work, as well as scrapes stickers, labels, paint, and more Reversible blade is easily locked in place with thumbscrew for storage.

- Available in an assortment of colors

**Also available:**

**701-30 Merchandiser** - 30 piece

**701-50 Merchandiser** - 50 piece



*Category continued on the next page >>>*



**701-30 and 701-50 Mini-Scraper Merchandisers**

**701-30 Merchandiser** - 30 piece

**701-50 Merchandiser** - 50 piece

Handy pocket-sized mini scraper is ideal for detail and body work, as well as scrapes stickers, labels, paint, and more. Reversible blade is easily locked in place with thumbscrew for storage.

- Available in an assortment of colors
- Great for display on parts counters and check out areas



**536-700 Mini Razor Knife**

- Durable mini razor knife
- Available individually or 30-packs (**536-MERCH**)



**717 Extended Razor Blade Scraper**

- The 12" (305 mm), extra-long reach makes this the perfect tool for removing hard-to-reach inspection stickers from long, sloped windshields
- Blade clamp designed to prevent the blade from popping out

**Includes:**

One Poly guard blade and two standard single-edge blades inside storage handle



**747 Scraper Mate Sticker Remover**

- Economical, compact scraper is perfect for removing old stickers and paint blotches off windows
- Extends to 7-7/8" when fully opened and locked into position
- Holder tilts blade to give a better angle for getting into corners
- Blade folds into handle for safe storage



**709 Poly Guard Blades**

- Used to scrape in scratch risk areas
- Can be used many of our scraping tools
- Five (5) to a pack



**52600 Scraper Set**

- Includes our most popular scrapers in one complete set

**Contains:**

- (2) **701**, Mini Scrapers
- (1) **717**, Extended Scrapers
- (1) **747**, Folding Scraper

| <b>Part No.</b> | <b>Desc.</b>  | <b>Page</b> |
|-----------------|---|-------------|
| <b>16</b>       | Quick-Change Wheel Stud Cleaner Kit                   | 46          |
| <b>17</b>       | 24" Urethane Cut Out Knife                            | 57          |
| <b>19</b>       | Stud Remover  | 30          |
| <b>20</b>       | Clutch Alignment Tool                                 | 28          |
| <b>21</b>       | 4-Piece 9-3/4" Hook and Pick Set                      | 52          |
| <b>22</b>       | 6-Piece Hook and Pick Set                             | 52          |
| <b>23</b>       | Telescoping Pick Up Tool with 16 lbs. Capacity        | 52          |
| <b>25</b>       | Telescoping 2" Round Inspection Mirror                | 53          |
| <b>26</b>       | 18" Urethane Cut Out Knife                            | 57          |
| <b>27</b>       | Telescoping Inspection Mirror                         | 53          |
| <b>28</b>       | Pilot Bearing Puller with Slide Hammer                | 28          |
| <b>29</b>       | Blind Hole Puller Set                                 | 28          |
| <b>30</b>       | Magnetic Pick-Up Tool with 2-1/2 lbs. Capacity        | 53          |
| <b>31</b>       | Pilot Bearing Puller                                  | 28          |
| <b>32</b>       | 2-3/8" LED Lighted Inspection Mirror                  | 53          |
| <b>33</b>       | Magnetic Pick-Up Tool and LED Pen Light               | 53          |
| <b>35</b>       | Rectangular Inspection Mirror with Rotating LED Light | 53          |
| <b>39</b>       | O-Ring Hook and Pick                                  | 53          |
| <b>47</b>       | Light Bulb Pliers                                     | 48          |
| <b>48</b>       | Offset Snap Ring Pliers                               | 48          |
| <b>49</b>       | Snap Ring Pliers                                      | 48          |
| <b>52</b>       | Oetiker Clamp Pliers                                  | 48          |
| <b>54</b>       | Adjustable Indexing Trim Clip Pliers                  | 49          |
| <b>55</b>       | Body Clip Pliers                                      | 56          |
| <b>56</b>       | Recessed Body Clip Pliers                             | 56          |
| <b>58</b>       | 45-Degree Hose Clamp Pliers                           | 49          |
| <b>59</b>       | Hose Clamp Pliers                                     | 49          |
| <b>62</b>       | Brake Fluid Tester (DOT 4 only)                       | 35          |
| <b>63</b>       | Window Tint Meter                                     | 22          |
| <b>64</b>       | High-Energy Ignition Tester                           | 19          |
| <b>65</b>       | Noid Light Set  | 19          |
| <b>66</b>       | Universal Brake Fluid Tester (DOT 3/DOT 4/DOT 5.1)    | 35          |
| <b>69</b>       | Amp Alert   | 22          |
| <b>70</b>       | Heavy-Duty Circuit Tester                             | 22          |
| <b>72</b>       | Amp Hound 2   | 23          |
| <b>73</b>       | Ripple Quick Tester                                   | 23          |
| <b>74</b>       | "The Original" Amp Hound                              | 22          |
| <b>76</b>       | Deluxe 12-Volt and 24-Volt Relay Tester               | 23          |
| <b>78</b>       | LCD Test Light for 6V, 12V, 24V Systems               | 22          |
| <b>81</b>       | Logic Light Circuit Tester                            | 22          |

| <b>Part No.</b> | <b>Desc.</b>   | <b>Page</b> |
|-----------------|--|-------------|
| <b>84</b>       | WiFi Borescope   | 23          |
| <b>100</b>      | Master Finger Bit Driver Set   | 46          |
| <b>104-03</b>   | Finger Socket Driver 3-Pack  | 46          |
| <b>108-BLUE</b> | 1/4" Mini Finger Ratchet   | 46          |
| <b>109-BLUE</b> | 3/8" Finger Mini Ratchet Drive   | 46          |
| <b>112</b>      | 3-Piece Non-Marring Pick Set   | 55          |
| <b>113</b>      | 5-PC. Trim and Panel Clip Tool Set                                     | 55          |
| <b>114</b>      | 3-Piece XL Clip Lifter Set   | 55          |
| <b>115</b>      | 27-PC Trim Tool Set  | 56          |
| <b>116</b>      | 3-PC. Mini Pry Bar Set   | 56          |
| <b>117</b>      | 5-PC. Trim Fastener & Molding Remover Set                              | 56          |
| <b>118</b>      | 11-PC. Trim Tool Kit   | 56          |
| <b>119</b>      | Magnetic Bit Rail  | 54          |
| <b>125</b>      | Upholstery Tool Set  | 56          |
| <b>134</b>      | Two & Three Jaw Combination Pullers                                    | 26          |
| <b>135</b>      | Ford Radio Remover Tool  | 24          |
| <b>136</b>      | Putty Knife Scraper Set  | 57          |
| <b>142</b>      | Antenna & Radio Socket Set   | 24          |
| <b>151</b>      | Mini Tubing Cutter   | 39          |
| <b>153</b>      | Metric Double Flaring Tool   | 38          |
| <b>154</b>      | In-Line Flaring Tools  | 37          |
| <b>157</b>      | Constant Pressure Tube Cutter (Tubing sizes from 3/16" to 7/8")        | 39          |
| <b>158</b>      | Large Constant Pressure Tube Cutter (Tubing sizes from 1/8" to 1-1/8") | 39          |
| <b>159</b>      | Mini-Mini Constant Tube Cutter   | 39          |
| <b>160</b>      | Brake Line Flaring Tool  | 38          |
| <b>161</b>      | In-Line Flaring Tools  | 37          |
| <b>163</b>      | Double Flaring Tool  | 38          |
| <b>164</b>      | In-Line Flaring Tools  | 37          |
| <b>165</b>      | Master Flaring Tool Kit  | 37          |
| <b>166</b>      | Hydraulic In-Line Flaring Tool   | 37          |
| <b>169</b>      | Double Deburr Tool   | 40          |
| <b>171</b>      | Ford 6.0L Diesel Head Bolt Adapter                                     | 14          |
| <b>182</b>      | Tie Rod End Tool   | 42          |
| <b>184</b>      | Ball Joint Separator   | 42          |
| <b>185</b>      | Front End-Service Kit  | 42          |
| <b>186</b>      | Pitman Arm Puller  | 42          |
| <b>187</b>      | Steering Wheel Puller  | 26          |
| <b>188</b>      | Outer Tie Rod Puller   | 42          |
| <b>189</b>      | Harmonic Balancer Puller   | 28          |
| <b>192</b>      | Pulley Puller  | 26          |



| <b>Part No.</b> | <b>Desc.</b>  | <b>Page</b> |
|-----------------|---|-------------|
| <b>194</b>      | Tie Rod End Puller  | 42          |
| <b>195</b>      | Power Steering Pump Remover & Installer Kit               | 14          |
| <b>196</b>      | Ball Joint Removal and Installation Kit                   | 42          |
| <b>197</b>      | Ball Joint Super Set                                      | 41          |
| <b>198</b>      | Subaru Crank Pulley Tool                                  | 17          |
| <b>199</b>      | Heavy-Duty U-Joint Puller                                 | 27          |
| <b>200</b>      | Torsion Bar Unload Tool                                   | 40          |
| <b>226</b>      | Adjustable Magnetic Pickup Tool                           | 54          |
| <b>237</b>      | Two-Jaw Pullers   | 25          |
| <b>240</b>      | Two-Jaw Pullers   | 25          |
| <b>244TNZ</b>   | 4-Piece Heater Hose Disconnect Set                        | 13          |
| <b>253</b>      | Fuel Tank Locking Ring Tool                               | 20          |
| <b>264</b>      | Parts Cleaning Brush                                      | 54          |
| <b>287</b>      | Telescoping Magnetic Pickup Tool                          | 54          |
| <b>291</b>      | Truck & Tractor Filter Pliers                             | 31          |
| <b>297</b>      | Filter Pliers   | 31          |
| <b>298</b>      | Filter Pliers   | 31          |
| <b>302</b>      | Adjustable Filter Pliers                                  | 31          |
| <b>332</b>      | Hub Resurfacing Kit                                       | 45          |
| <b>342</b>      | Stripped Hex Bolt Removers, SAE                           | 51          |
| <b>343</b>      | Stripped Hex Bolt Removers, Metric                        | 51          |
| <b>351</b>      | All Purpose Awl   | 54          |
| <b>353</b>      | Denailer  | 54          |
| <b>357</b>      | Disc Brake & Small Engine Hone                            | 35          |
| <b>358</b>      | Disc Brake & Caliper Hone                                 | 35          |
| <b>360</b>      | Engine Cylinder Hone, 2"-7"                               | 13          |
| <b>361</b>      | Replacement Stone Medium Grit, 220-240 Grit, Set of Three | 13          |
| <b>361-01</b>   | Replacement Stone Fine Grit, 400 Grit, Set of Three       | 13          |
| <b>361-02</b>   | Replacement Stone Coarse Grit, 100 Grit, Set of Three     | 13          |
| <b>362</b>      | Adjustable Brake Cylinder Hone                            | 36          |
| <b>364</b>      | Parking Brake Tool  | 37          |
| <b>386</b>      | Harmonic Balancer Puller                                  | 14          |
| <b>438</b>      | Spiral Screw Extractor Set                                | 52          |
| <b>439</b>      | Stripped Hex Screw Set (Metric)-9 Pc Set                  | 51          |
| <b>440</b>      | Stripped Hex Screw Set (SAE)-8 Pc Set                     | 52          |
| <b>441</b>      | Fluted Screw Extractor Set                                | 52          |
| <b>450</b>      | Tight Access Drive Wrench                                 | 47          |
| <b>480</b>      | Extendable 1/2" Drive Breaker Bar                         | 47          |
| <b>482</b>      | 90-Degree Gearless Angle Drive (1/4")                     | 47          |
| <b>483</b>      | 90 Degree Gearless Angle Drive (3/8")                     | 47          |

| <b>Part No.</b> | <b>Desc.</b>  | <b>Page</b> |
|-----------------|---|-------------|
| <b>485</b>      | 45-Degree Gearless Angle Drive (1/4")                                   | 47          |
| <b>487</b>      | Drive Adapter Set   | 47          |
| <b>488</b>      | Twin Spin Converter (1/4"-3/8")   | 48          |
| <b>489</b>      | Twin Spin Drive Converters (3/8"-1/2")                                  | 48          |
| <b>490</b>      | Versa-Drive (2-in-1 Adapters)   | 48          |
| <b>497</b>      | Heavy Duty Yoke Puller  | 27          |
| <b>499</b>      | Ford 7.3L Diesel Rear Main Seal and Sleeve Removal and Installation Kit | 14          |
| <b>501</b>      | 7-Ton Bar Type Puller Bearing Separator Set                             | 25          |
| <b>502</b>      | 5-Ton Bar Type Bearing Separator Pusher and Puller Set                  | 25          |
| <b>503</b>      | Bearing Splitter  | 25          |
| <b>504</b>      | Bushing Driver Set  | 43          |
| <b>506</b>      | Adjustable Bearing Pusher & Installer                                   | 28          |
| <b>508</b>      | Small Bearing Splitter  | 25          |
| <b>509</b>      | Medium Bearing Splitter   | 25          |
| <b>510</b>      | Coil Spring Compressor  | 41          |
| <b>511</b>      | Large Bearing Splitter  | 25          |
| <b>512</b>      | Macpherson Strut Tool   | 41          |
| <b>513</b>      | Master Macpherson Strut Tool Set  | 41          |
| <b>526</b>      | Flange Type Axle & Front Wheel Hub Puller                               | 45          |
| <b>536</b>      | Monster Knife   | 57          |
| <b>536-4</b>    | Monster Knife 4-Pack Merchandiser                                       | 57          |
| <b>536-700</b>  | Mini Razor Knife  | 58          |
| <b>549</b>      | Battery Terminal Clamp Spreader   | 24          |
| <b>553</b>      | Heavy-Duty Battery Post & Terminal End Brush                            | 24          |
| <b>610</b>      | Diesel Exhaust Fluid Tester   | 33          |
| <b>611</b>      | 17-Piece Electrical Back Probe Kit                                      | 21          |
| <b>612</b>      | Universal Ignition Spark Tester   | 20          |
| <b>613</b>      | 20-Piece Electrical Back Probe Kit                                      | 21          |
| <b>627</b>      | Hook Scribe   | 53          |
| <b>641</b>      | Piston Ring Compressor Set  | 13          |
| <b>668</b>      | Pistol Grip LED Lighted Screwdriver                                     | 47          |
| <b>683</b>      | Master Disconnect Set   | 20          |
| <b>684</b>      | Line Quick Disconnect Tools   | 20          |
| <b>689</b>      | Fuel Line Plier   | 20          |
| <b>693</b>      | Ignition Point Files  | 20          |
| <b>700</b>      | Universal Brake Pad Spreader  | 34          |
| <b>701</b>      | Mini Scraper  | 57          |
| <b>701-30</b>   | Mini-Scraper Merchandisers  | 58          |
| <b>701-50</b>   | Mini-Scraper Merchandisers  | 58          |
| <b>702</b>      | Disc Brake Pad Spreader   | 34          |

| <b>Part No.</b> | <b>Desc.</b>   | <b>Page</b> |
|-----------------|--|-------------|
| <b>709</b>      | Poly Guard Blades                                      | 58          |
| <b>717</b>      | Extended Razor Blade Scraper                           | 58          |
| <b>722</b>      | Disc Brake Piston Remover                              | 34          |
| <b>723</b>      | Combination 2-Pin and 3-Pin Caliper Piston Rewind Tool | 34          |
| <b>724</b>      | Brake Caliper Turn Back Tool Set                       | 34          |
| <b>725</b>      | 2-Pin Brake Rewind Tool                                | 34          |
| <b>726</b>      | 3-Pin Brake Rewind Tool                                | 34          |
| <b>727</b>      | Universal Caliper Turn and Push-Back Tool              | 34          |
| <b>730</b>      | Magnetic Belt Holder                                   | 12          |
| <b>734</b>      | “The Grabber” Serpentine Belt Tool                     | 12          |
| <b>735</b>      | Euro Stretch Belt Installation Tool                    | 12          |
| <b>736</b>      | Stretch Belt Installation Tool                         | 12          |
| <b>737</b>      | Subaru Stretch Belt Installer                          | 12          |
| <b>738</b>      | Serpentine Belt Tool                                   | 12          |
| <b>747</b>      | Scraper Mate Sticker Remover                           | 58          |
| <b>750</b>      | 22-Piece ADP Kit                                       | 24          |
| <b>751</b>      | GM Thermostat Wrench                                   | 13          |
| <b>752</b>      | Variable Pin Spanner Wrench                            | 14          |
| <b>754</b>      | 3-in-1 Subaru Sprocket Tool                            | 16          |
| <b>756</b>      | 5-Piece Alternator Service Bit Set                     | 24          |
| <b>758</b>      | Heavy-Duty Tubing Bender                               | 40          |
| <b>762</b>      | Sub-Compact Brake Cylinder Hone                        | 35          |
| <b>763</b>      | Replacement Stones                                     | 35          |
| <b>764</b>      | Exhaust Tail Pipe Cutter                               | 55          |
| <b>767</b>      | Ratcheting Tubing PVC Cutter                           | 55          |
| <b>785</b>      | Cup-Type Oil Filter Wrenches                           | 32          |
| <b>788</b>      | Cup-Type Oil Filter Wrenches                           | 32          |
| <b>789</b>      | Cup-Type Oil Filter Wrenches                           | 32          |
| <b>791</b>      | Cup-Type Oil Filter Wrenches                           | 32          |
| <b>803</b>      | Heavy-Duty Filter Strap Wrench                         | 32          |
| <b>814</b>      | All-Size Filter Strap Wrench                           | 32          |
| <b>839</b>      | 6-Piece 4WD Locknut Socket Set                         | 43          |
| <b>841</b>      | 11-Piece Oxygen Sensor Socket Set                      | 18          |
| <b>841-11</b>   | Sensor Thread Chaser (M18 x 1.5)                       | 18          |
| <b>842</b>      | 7-Piece Oxygen Sensor Socket Set                       | 19          |
| <b>843</b>      | Oxygen Sensor Wrench                                   | 19          |
| <b>844</b>      | 6 and 12-Point Flex O2 Wrench                          | 19          |
| <b>855</b>      | Brake Bleeder Tank                                     | 36          |
| <b>878</b>      | Ratcheting Chain Wrench                                | 55          |
| <b>891</b>      | Heavy-Duty Truck Oil Filter Wrenches                   | 31          |

| <b>Part No.</b> | <b>Desc.</b>                                 | <b>Page</b> |
|-----------------|--|-------------|
| <b>892</b>      | Heavy-Duty Truck Oil Filter Wrenches         | 31          |
| <b>893</b>      | Heavy-Duty Truck Oil Filter Wrenches         | 31          |
| <b>904</b>      | Wheel Bearing Tool                           | 45          |
| <b>905</b>      | Light-Duty U-Joint Puller                    | 27          |
| <b>906</b>      | Finger Bit Driver                            | 46          |
| <b>907</b>      | Intermediate U-Joint Puller                  | 27          |
| <b>912</b>      | Extra-Long Torx Screwdriver Set              | 51          |
| <b>917</b>      | Tamper-Proof Extra-Long Torx Screwdriver Set | 51          |
| <b>932</b>      | Torx Socket Set with Holder (Internal)       | 50          |
| <b>933</b>      | Master Torx Bit Set                          | 50          |
| <b>934</b>      | 52-Piece Torx Bit Set                        | 50          |
| <b>935</b>      | 4-Piece Mortorq Set with Storage Rail        | 51          |
| <b>941</b>      | Two-Jaw Pullers                              | 25          |
| <b>942</b>      | Two-Jaw Pullers                              | 25          |
| <b>944</b>      | Two-Jaw Pullers                              | 25          |
| <b>946</b>      | Inner Tie Rod Removal Tool                   | 43          |
| <b>947</b>      | Heavy-Duty Inner Tie Rod Wrench              | 43          |
| <b>951</b>      | Two & Three Jaw Combination Pullers          | 26          |
| <b>952</b>      | Two & Three Jaw Combination Pullers          | 26          |
| <b>953</b>      | Two & Three Jaw Combination Pullers          | 26          |
| <b>954</b>      | Two & Three Jaw Combination Pullers          | 26          |
| <b>956</b>      | 9-Way Slide Hammer Puller Set                | 25          |
| <b>957</b>      | Adjustable Puller                            | 26          |
| <b>966</b>      | 8-Piece, 6-Point Axle Nut Socket Set         | 43          |
| <b>967</b>      | 4-In-1 Swivel Oil Filter Wrench              | 30          |
| <b>976</b>      | 8-Piece, 12-Point Metric Axle Nut Socket Set | 44          |
| <b>977</b>      | Toyota Front Hub Nut Socket                  | 44          |
| <b>980</b>      | Crank-Bolt Socket Set                        | 15          |
| <b>987</b>      | Heavy-Duty Three-Legged Filter Wrench        | 33          |
| <b>988</b>      | Three-Legged Filter Wrench                   | 33          |
| <b>989</b>      | Swivel Truck Filter Wrenches                 | 31          |
| <b>991</b>      | Swivel Truck Filter Wrenches                 | 31          |
| <b>993</b>      | Swivel Oil Filter Wrenches                   | 30          |
| <b>994</b>      | Swivel Oil Filter Wrenches                   | 30          |
| <b>995</b>      | Swivel Oil Filter Wrenches                   | 30          |
| <b>996</b>      | Oil Filter Socket Set                        | 33          |
| <b>999</b>      | Swivel Oil Filter Wrenches                   | 30          |
| <b>1016</b>     | Snap Ring Pliers Set                         | 49          |
| <b>7541</b>     | Subaru Hex Bit                               | 17          |
| <b>16000</b>    | Radiator Hose Pinch Off Pliers               | 50          |

| <b>Part No.</b> | <b>Desc.</b>  | <b>Page</b> |
|-----------------|---|-------------|
| <b>16500</b>    | Heavy Duty Pinch Off Pliers                             | 50          |
| <b>18510</b>    | Bolt Retained Bearing Cup Installer                     | 27          |
| <b>20200</b>    | Magnetic Bearing Cup Installer                          | 27          |
| <b>24700</b>    | One Person Brake Bleeder Tool                           | 36          |
| <b>29200</b>    | Large and Small Filter Pliers Set                       | 32          |
| <b>29900</b>    | Jumbo Filter Pliers                                     | 31          |
| <b>32300</b>    | Adjustable 2"-5" Cylinder Hone Deglazer                 | 13          |
| <b>33000</b>    | Multi-Hone Set  | 36          |
| <b>36700</b>    | 2-In-1 S-Cam Brake Tool                                 | 36          |
| <b>38000</b>    | Ratcheting Harmonic Balancer Puller                     | 16          |
| <b>38100</b>    | Ford and Mazda Crankshaft Holder                        | 16          |
| <b>38110</b>    | Ford Harmonic Balancer Holder                           | 16          |
| <b>38200</b>    | 4-Piece Oil Plug Remover                                | 33          |
| <b>38400</b>    | Drain Plug Repair Kit                                   | 33          |
| <b>38500</b>    | Master Harmonic Balancer & Pulley Installer             | 15          |
| <b>38700</b>    | Long Reach Harmonic Balancer and Pulley Installer       | 15          |
| <b>38710</b>    | Ford® EcoBoost® Long Reach Harmonic Balancer Installer  | 15          |
| <b>38800</b>    | Harmonic Balancer Installer                             | 16          |
| <b>38100</b>    | Ford and Mazda Crankshaft Holder                        | 16          |
| <b>38110</b>    | Ford Harmonic Balancer Holder                           | 16          |
| <b>38900</b>    | Two Valve Ford Triton Spark Plug Thread Repair Kit      | 17          |
| <b>39100</b>    | Ford Triton Spark Plug Extractor                        | 17          |
| <b>39200</b>    | Ford Triton Spark Plug Porcelain Extractor              | 17          |
| <b>39300</b>    | Three Valve Ford Triton Insert Kit                      | 18          |
| <b>39500</b>    | Ford Triton Broken Spark Plug and Electrode Removal Set | 18          |
| <b>48100</b>    | Master Ratchet Accessory Set                            | 48          |
| <b>49500</b>    | Body Dent & Seal Puller                                 | 28          |
| <b>49600</b>    | Seal Puller   | 29          |
| <b>49700</b>    | 14-Piece Light-Duty Slide Hammer and Puller Set         | 26          |
| <b>52600</b>    | Scraper Set   | 58          |
| <b>55000</b>    | 11-Piece Deutsch Terminal Service Kit                   | 21          |
| <b>55004</b>    | Open Barrel Crimping Pliers                             | 21          |
| <b>55005</b>    | Terminal Crimping Pliers                                | 21          |
| <b>55100</b>    | 6-Piece Deutsch Terminal Service Kit                    | 21          |
| <b>75510</b>    | 16-Piece Master Wheel Locking Nut Key Set               | 45          |
| <b>75902</b>    | Tube Bend Mirror Adaptors                               | 40          |
| <b>82700</b>    | Metric Bubble Flaring Kit                               | 38          |
| <b>82800</b>    | SAE Tube Flaring Kit                                    | 38          |
| <b>82900</b>    | SAE and Metric Tube Flaring Kit                         | 39          |
| <b>90200</b>    | Master Spring Compressor Set                            | 41          |

|              |   |    |
|--------------|---|----|
| <b>90620</b> | Finger Bit Driver Merchandisers             | 46 |
| <b>90630</b> | Finger Bit Driver Merchandisers             | 46 |
| <b>90700</b> | 2-in-1 Dodge and Ford Hub Removal Tool      | 44 |
| <b>90701</b> | Dodge Hub Removal Tool                      | 44 |
| <b>90702</b> | Ford Hub Remover Adapter                    | 45 |
| <b>90703</b> | Dodge Hub Nut Socket                        | 44 |
| <b>91000</b> | Coil Spring Clamps                          | 41 |
| <b>91300</b> | Floor-Mounted, 2,200 lbs. Spring Compressor | 40 |
| <b>91800</b> | Rear Axle Bearing Puller Set                | 29 |
| <b>94800</b> | Hub Puller                                  | 45 |
| <b>95200</b> | In-Line Dowel Pin Puller Set                | 29 |
| <b>95300</b> | In-Line Dowel Pin Puller Set                | 29 |
| <b>95400</b> | In-Line Dowel Pin Puller Set                | 29 |
| <b>95500</b> | SAE Stud Extractor Set                      | 29 |
| <b>95550</b> | SAE Stud Extractor Set                      | 29 |
| <b>95600</b> | SAE Stud Removal and Installation Set       | 30 |
| <b>95700</b> | Metric Stud Removal and Installation Set    | 30 |

# OUR FAMILY OF BRANDS

## HORIZON TOOL, INC.

**WE ARE FIVE UNIQUE COMPANIES WORKING TOGETHER AS ONE** to offer diverse product lines and be a reliable source for our customers, capable of providing innovation, dependability, and quality throughout all of our brands.

### **ALLSTART** - Portable Power

Allstart offers safe and dependable portable power products with jump starters, power banks, and other charging solutions. From charging a mobile device while on-the-go to starting a heavy-duty truck in the cold of winter, Allstart has the power you need.



### **MIGHTY-SEVEN** - Air Tools

A full line of powerful, high-quality air tools you can rely on for years. Each built for everyone and any scenario. Whether you are at home in your garage, a professional technician in a shop, or running a production line, we provide the tools to keep you going.



[www.m7-us.com](http://www.m7-us.com)

### **KT PRO** - Professional Hand Tools

These professional-grade tools exceed more than expectations, including sockets, wrenches, ratchets, screwdrivers, pliers, and so many more. All products are ISO certified, exceed ANSI and DIN standards, and backed by a lifetime warranty.



[www.ktpros.com](http://www.ktpros.com)

### **ALLSHIELD** - Health Care Products

A brand created for one purpose; protect what matters most. The health and safety of our families, customers, and employees have become our foremost concern. AllShield offers a complete line of protection with sanitizers, dispensers, thermal imaging, and more.



[www.allshieldusa.com](http://www.allshieldusa.com)

**DON'T HAVE A HORIZON TOOLS REPRESENTATIVE? CALL 1.800.537.1077 TODAY!**

INNOVATION. DEPENDABILITY. QUALITY

## HOURS OF OPERATION:

MON 8:00 - 4:30  
TUE 8:00 - 4:30  
WED 8:00 - 4:30  
THU 8:00 - 4:30  
FRI 8:00 - 4:30

## ADDRESS:

7918 INDUSTRIAL VILLAGE ROAD  
GREENSBORO, NC 27409

## CONTACT INFO:

TF: 800.537.1077  
FX: 800.537.1717  
EMAIL: [info@calvantools.net](mailto:info@calvantools.net)



# INNOVATION. DEPENDABILITY. QUALITY

[www.cal-vantools.com](http://www.cal-vantools.com)