

## 72' Stainless Steel Square Windshield Wire

**AES-358**

This square wire will roll over when pulled allowing one of four sharp corners to cut through windshield sealant. Provides the best cutting ability when compared to any other style windshield wire.

HANG-UP CARD



URETHANE

## 11" Wire Starter Tool

**AES-757**

Designed for easy insertion of windshield wire through windshield sealant.

HANG-UP CARD



## 7-3/4" Wire Starter Tool

**AES-759**

Designed for easy insertion of windshield wire through windshield sealant.

HANG-UP CARD



## Universal Molding Release Tool

**AES-8501**

Slide tool under molding until a clip is contacted. Rock tool to spring clip and release the molding. The tool works in either direction. Use on rear or cemented windshields.

HANG-UP CARD



## "The Jiggler" Window Clip Removal Tools

Removes all adhesive and rear window reveal moldings in automobiles. Made of spring steel.

HANG-UP CARD



**AES-8503** For GM Vehicles

**AES-8504** For Ford Vehicles

## Double-Sided Molding Release Tool

**AES-8512**

Assists in releasing windshield and rear window molding clips on both GM and Ford vehicles without damage to the molding. Work either side of the blade under the molding and roll to release the retaining clip.

HANG-UP CARD



## 24" Heavy Duty Windshield Urethane Cutting Knife

**AES-12-K-281**

Uses standard utility knife blades.

HANG-UP CARD



## Windshield Urethane Cutting Knives

Made of lightweight aluminum. Uses a standard utility knife blade. One blade is included.

INDIVIDUALLY BAGGED

<b>AES-771</b>	9" Length
<b>AES-773</b>	18" Length
<b>AES-775</b>	24" Length

## Windshield Locking Strip Tool

**AES-772**

Includes two double-ended tips to fit most vehicles. Designed to swivel 90° in either direction. Select the tip with the opening that most closely fits the locking strip and feed the locking strip into the eyelet while working the tool around the windshield.

HANG-UP CARD

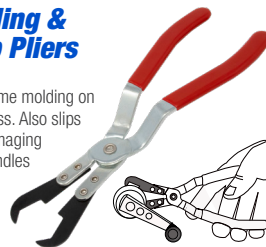


## Windshield Molding & Door Handle Clip Pliers

**AES-8509**

Releases clips to remove chrome molding on most windshields and rear glass. Also slips under door handle without damaging door panel material. Offset handles allow easy access.

HANG-UP CARD

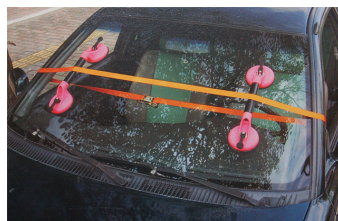


## Windshield Wiper Arm Remover

**AES-8525**

Tool removes wiper arms from most vehicles. Protective pad on bottom jaw will not scratch painted surfaces. Place jaws between wiper arm and shaft and squeeze handles to remove.

HANG-UP CARD



## Windshield Suction Cup Kit

**AES-77139**

Each suction cup moves up and down permitting use on contoured surfaces as well as flat. 4-5/8" suction cups. Kit includes: 2x double suction cups and 1x ratcheting tie down.

INDIVIDUALLY BOXED



## 2pc Door Holder Set

**AES-33850**

2pc Set designed to hold doors, trunks and hoods open during body work. Supporters adjust to fit 90% of all vehicles both foreign and domestic. Short arm extends from 9" up to 12". Long arm extends from 20" to 32". Easily installed in seconds.

HANG-UP CARD

## GM Door Spring Compressor Tool

**AES-2190**

Safely removes and installs door springs on General Motors cars and trucks. Center tightening screw can be adjusted with a 1/2" open end or ratcheting box wrench.

HANG-UP CARD

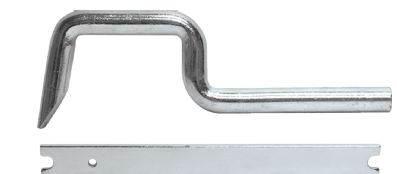
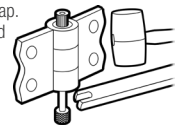


## Door Hinge Pin Extractor

**AES-6011**

For easy removal and replacement of door hinge pins. Choose the correct punch size for the door hinge and remove its threaded end cap; slide the punch upward through the hinge and reattach end cap. Next, fit the slotted end of the cranked handle onto the punch and tap gently with a mallet to extract hinge pin.

HANG-UP CARD



## Door Hinge Popper

**AES-6014**

Drives out stubborn hinge pins. Provides clearance for door panels. Works on all GM cars with removable hinge pins. Includes pin puller to remove loosened pins.

HANG-UP CARD



## 8pc Door Hinge Remover Set

**AES-6028**

Set includes one each: M8, M10, M12 spline bits and T-30, T-40, T-45, T-50 star bits. Internal ratchet with 45° head.

INDIVIDUALLY BOXED