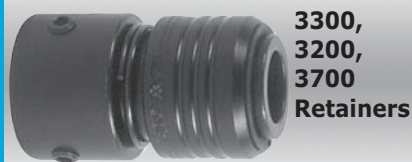
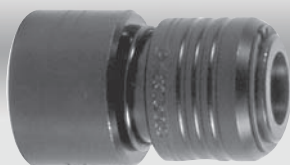


Retainers / Attachments



**3300,
3200,
3700
Retainers**

These Ajax Kwik Change Retainers are threaded exactly to the manufacturer's specifications. The 3300 retainer is for use with .401 standard turn-type or non-turn type tools. 3200 retainer is for .498 standard turn-type tools and 3700 retainer is for .498 non-turn type tools. See chart to find the right retainer for your hammer or specify make and model of hammer when ordering. *** See chart below.**



**3300-U
Retainer**

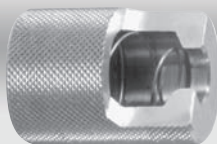
This Kwik Change Retainer may be used with .401 standard turn-type or non-turn type tools. It features a pliable insert that adapts to most models of hammer.

*** See chart below.**

Retainer Replacement Parts

Description	3200	3300	3300-U	3700
Lock Screw	3304	3304	—	3304
Body*	3204	3301	3301-U	3701
Balls (4)	3013	3013	3013	3013
Spring	3206	3014	3014	3014
Sleeve	3205	3302	3302	3010
Front Snap	3207	3016	3016	3705
Washer				
Back Snap	3208	3306	—	3208
Washer				
Nylon Insert*	3210	3310	3310-U	3710

***Specify Make and Model of Hammer**



**893
Chisel
Holder
Retainer
Chuck**

Replaces conventional spring retainer. Fits most .401 hammers. Weight .20 lbs.

Retaining Springs

- 895 .401 Std. Beehive Spring (CPA 046096)
- 895-IR .401 Std. Beehive Spring (AVC-183)
- 895-SX .401 Std. Beehive Spring (SX# 2207)
- 898 .498 Beehive (CPA 047096)



- 896 .498 Mech Aid (CPA 047095)
- 897 .401 Mech Aid (CPA 046095)
- 897-IR .401 Mech Aid (AVC-183A)



- 899 .401 Beehive Spring & Washer (Sioux 2208)



- 900 .401 Mech Aid (B&D 58616)



3500 Needle Scaler Attachment



Replacement Parts

- 3501* Body with Insert
- 3505 Front Snap Washer
- 3502 Driver
- 375 Needle Holder
- 3503 Spring
- 1376 Set of 19 Needles (5")
- 3504 Front Bushing
- 3304 Set Screws (3)

Threads onto .401 hammers to make an instant needle scaler. Ideal for paint, rust, weld flux removal and more.

**Specify Make and Model Hammer*

Manufacturer	Model	3300	3300-U	3200	3500	3700
		.401 Turn or Non-Turn Type Tools	.401 Turn or Non-Turn Type Tools	.498 Turn Type Tools	.401 Type Needle Scaler	.498 Non-Turn Type Tools
American Pneumatic	All models	3300-1			3500-1	
Bosch	All models	3300-43				
Chicago Pneumatic	4447-717			3200-3		3700-3
Chicago Pneumatic	9311-9315, 711-715	3300-9	3300-U		3500-9	
Cleco	E3-E4-E15-E16	3300-9	3300-U		3500-9	
Craftsman	18800	3300-9	3300-U		3500-9	
Dayton	All models	3300-9	3300-U		3500-9	
Desouter	All models	3300-1			3500-1	
Florida Pneumatic	All models	3300-10	3300-U		3500-10	
Ingersoll-Rand	AVC-26			3200-1		3700-1
Ingersoll-Rand	115, 116, 117	3300-9	3300-U		3500-9	
Ingersoll-Rand	121, 132, 772	3300-1			3500-1	
Ingersoll-Rand	AV10-12-13	3300-1			3500-1	
Sioux	270-272	3300-1			3500-1	
Snap-On	PH45-PH50	3300-10	3300-U		3500-10	
Superior	All models	3300-1			3500-1	

NOTE: Retainers for other models available on request.

