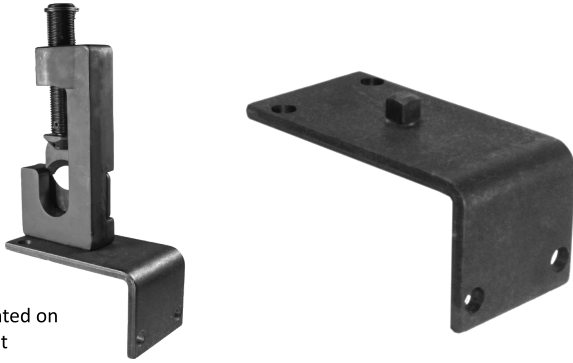


## B1218-BM



B1218 mounted on bench mount

## BCK18-022



Breaker bar for holding the bottom, side or top of the crimper or cutter. Also can turn the head for cutting and crimping.



## BCK18 Instructions

### CAUTION:

- Always wear eye protection when using this product.
- Keep hands and fingers well away from the cutting blade while this tool is operated.

## B1218 Wire Shear

This tool is designed to cut stranded copper wire only. It will cut up to 4 AWG.

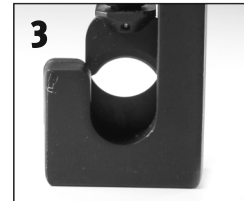
For bench work, use the Bench Mount Adapter (B1218-BM) attach the B1218 to the adapter via the 3/8" stud on the adapter plate.



For use away from a work bench, use a 3/8" ratchet or included breaker bar to hold the Shear



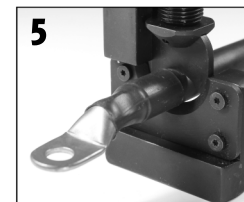
Using a 3/8" ratchet open the Shear to accommodate the size wire being cut



Hold the tool with a 3/8" ratchet at the base of the tool.



Using a 3/8" drive ratchet (manual or cordless driven), drive the cutting head through the wire.



Reverse the ratchet and back off the cutting blades



E-Z RED COMPANY,  
8 LEONARD WAY, DEPOSIT, NY  
INSIDE THE US 1-800-522-7947  
INTERNATIONAL 1-607-467-2866  
SALES@EZRED.COM

### Replacement parts:

Lower blade: B1218-LB  
Upper blade: B1218-UB  
Bench Mount: B1218-BM