



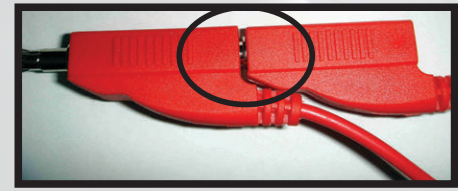
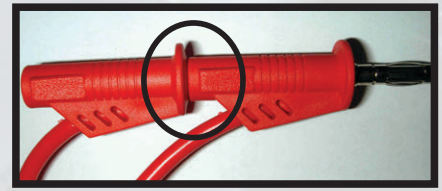
92 PC. MASTER LINE KIT

#7662

CTA vs The Other Guys

1 to 1 connector (1 to 1 Male/Female connection of banana sockets)

NO GAP -
no leakage &
THICKER, more
durable wires
handle 24V+

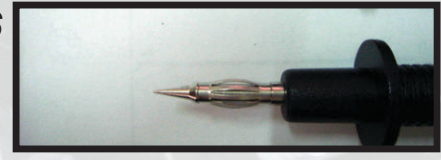


Gap may lead to
leakage/danger
Thin cable - may melt
during testing, won't
work on (24V or over)

Stainless
Steel tips



Probes



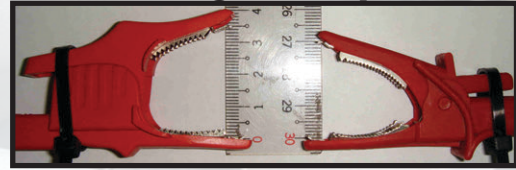
Electroplated
Copper tips

PP(Polypropylene) body - superior strength

PVC(Polyvinyl Chloride) body - too soft

1000V & 30 Amps
CE certificated
Larger opening
range

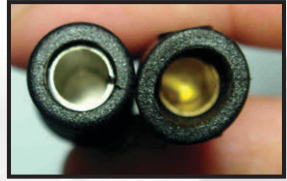
Alligator Clips



600V & 10 Amps
NO CE certification
Smaller opening
range

Electro-plated

Banana Sockets



NOT Electro-plated

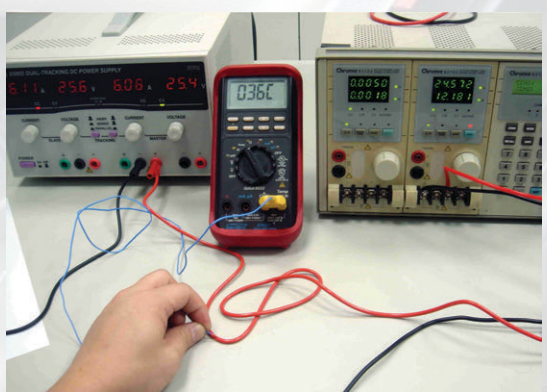
1 to 2 Connector (1 to 2 Male/Female connection of banana sockets)

Covered female
connector - protects
user and vehicle

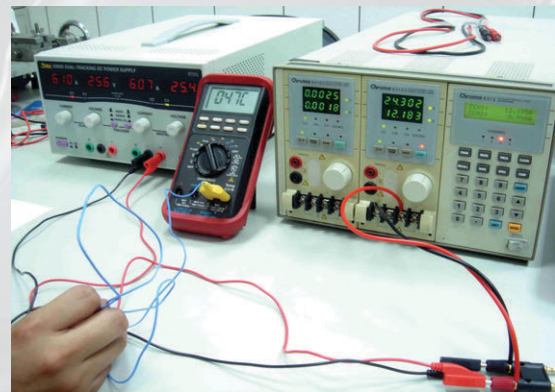


Female connector
exposed - Not electroplated
Potentially dangerous for
both user and vehicle

The highest
temperature
during
5 minutes
@ 24V
testing:
36 C



The highest
temperature
during
5 minutes
@ 24V
testing:
47 C



92 PC. MASTER LINE KIT

#7662



Name	Q'TY	Photo	Parts No.	Description	Name	Q'TY	Photo	Parts No.	Description
5KΩ potentiometer (variable resister)	2		S01	Many parts in vehicle are applied to the variable resister (engine coolant temp.sensor, air temp. sensor,oil temp.sensor). You can adjust the resister to meet your demand.	1 to 1 extension cable	4		S12 (Red) S13 (Black)	1 to 1 Male / Female connector of banana sockets.
Alligator clips	2		S10 (Red) S11 (Black)	Clip the testing part,can be used together with the probe & extension cable.	Probe	2		S18 (Red) S19 (Black)	Probe the testing part, can be used together with the alligator clip and extension cable.
Acicular probe	4		S04 (Red) S05 (Black)	To avoid the damage, please notice the operating angle.(Good strength with standless steel)	Round Male terminals with Female banana socket	12		F041 F042 F043 F044	4.0mm Male terminal (3pcs / each) 3.5mm Male terminal (3pcs / each) 2.0mm Male terminal (3pcs / each) 1.5mm Male terminal (3pcs / each)
LED stroboscope	2		S03	2-color and 2-way LED. The LED changes the color when shifting the positive (+) / Negative (-).	Flat Male terminals with Female banana socket	24		F050 F051 F052 F053 F055 F056 F057 F058	0.7mm Male terminal (3pcs / each) 0.8mm Male terminal (3pcs / each) 1.2mm Male terminal (3pcs / each) 2.0mm Male terminal (3pcs / each) 2.5mm Male terminal (3pcs / each) 3.0mm Male terminal (3pcs / each) 5.0mm Male terminal (3pcs / each) 6.0mm Male terminal (3pcs / each)
SRS Connector	2		S07	After accident, the airbag needs to set up a new SRS airbag. The SRS connector is used to replace the SRS airbag to connect with the system first. The connector will be burned if the current is over 0.25A.	Flat Female terminals with Female banana socket	24		F061 F062 F063 F064 F065 F066 F067 F068	6.0mm Female terminal (3pcs / each) 5.0mm Female terminal (3pcs / each) 3.0mm Female terminal (3pcs / each) 2.5mm Female terminal (3pcs / each) 2.0mm Female terminal (3pcs / each) 1.2mm Female terminal (3pcs / each) 0.8mm Female terminal (3pcs / each) 0.7mm Female terminal (3pcs / each)
1 to 2 connector	2		S06	1 to 2 Male / Female connector of banana sockets.	Round Female terminals with Female banana socket	12		F071 F072 F073 F074	1.5mm Female terminal (3pcs / each) 2.0mm Female terminal (3pcs / each) 3.5mm Female terminal (3pcs / each) 4.0mm Female terminal (3pcs / each)