

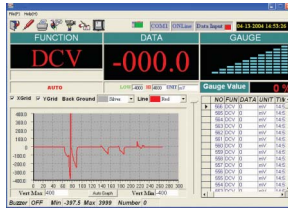


#595 PRO AUTOMOTIVE METER W/PC INTERFACE

HYBRID SAFE!

#595 features a **huge LCD display with bargraph** for easy viewing. It can be **interfaced to your PC or notebook** computer for data usage.

- Features:**
- CAT III 1000 Volt rated - safe to use w/Hybrids
 - 58 Test Ranges, 16 Test Functions
 - Huge Backlit LCD display w/analog bargraph
 - Ms Pulse Width for fuel injector on-time
 - Max/Min better diagnostic capability
 - 4 Step adjustable trigger levels
 - USB PC Interface - cord included
 - Desirable 20 Amp fused test range
 - **Hard Storage Case for safe storage**



595 PC Interface test screen



SEE WEB PAGE FOR FULL SPECIFICATIONS AND TEST RANGES!

MODEL #597IR PREMIUM AUTOMOTIVE METER (#597 No IR Thermometer)

Our premium automotive DMM. Two models available - #597IR includes IR Thermometer and #597 is without IR thermometer. #597 is equipped for advanced automotive diagnostics. #597 is **CAT III 1000 Volt safety rated** & **waterproof to IP67 standards**. #597IR includes EST-100 IR Thermometer Adapter.

SEE WEB PAGE FOR FULL SPECIFICATIONS AND TEST RANGES!

HYBRID SAFE!

- Features:**
- CAT III 1000 Volt rated - safe to use w/Hybrids
 - Waterproof to IP67 standards
 - 48 Test Ranges, 18 Test Functions
 - EST-100 IR Thermometer w/8:1 distance ratio
 - Backlit LCD display with analog bargraph
 - 1 Ms Peak Min/Max function for glitch capture
 - Ms Pulse Width for fuel injector on-time
 - Desirable 20 Amp Fused Test Range
 - Also measures temp via K-type probe

Peak Min/Max function measures transient voltages as fast as 1 Millisecond. #597 features a **desirable 20 Amp test range.**

Blow Mold Storage Case Included



#590 PROFESSIONAL AUTOMOTIVE DMM

Another good choice for the professional automotive technician, #590 puts the right capabilities in your hands. For example, #590 tests the **on-time of fuel injectors using the Ms pulse width test function.** This DMM is completely **auto-ranging**, making it an easy and efficient tool to use.

- Features:**
- 48 Test Ranges, 15 Test Functions
 - Auto-ranging
 - Modern design, protective rubber boot and case are all one piece
 - Huge 2 inch high LCD display with backlighting, easy to see digits!
 - Ms Pulse Width for fuel injector on-time
 - Desirable 20 Amp fused test range
 - Auto Power-Off, saves batteries
 - Relative change function, Data Hold
 - Built-in Temperature readings
 - **Includes zippered storage case**

Zippered Storage Case Included

SEE WEB PAGE FOR FULL SPECIFICATIONS AND TEST RANGES!

#582 DELUXE DMM WITH AMP SHUTTERS - new!

- Features:**
- 33 Test Ranges, 11 Test Functions
 - Huge 2 Inch LCD - great visibility
 - Amp shutters prevent blown fuses
 - Backlit display for use in dark areas
 - Measures Temp in both F and C, temp probe included
 - 10 Meg/Ohm Input Impedance
 - Desirable 20 Amp test range
 - Dual fuse protection
 - Safety leads & jacks
 - Built-in tilt stand, 9V battery installed

Professional grade DMM - manual ranging style. Features innovative amp shutters **which prevent mistaken operation**, ensuring safer useage and **less blown fuses**. A dangerous condition can exist if a DMM is left on Amps test function, then grabbed some time later and used to measure high voltage. The amp shutters on #582 prevent this from happening. All around great DMM with **desired 20 Amp test range.** Kit includes zippered carrying case, test leads, **temp probe** instructions and 9 volt battery.

SEE WEB PAGE FOR FULL SPECIFICATIONS AND TEST RANGES!

Zippered Storage Case Included

