



# 1/4" Drive Impact Socket Set



1/4"

6s

No. 9772

1/4" Drive Master Set



This set contains the most popular sockets in our 1/4" surface drive line, plus 3 extensions, universal joint, 1/4" to 3/8" adapter and 1/4" Hex to 1/4" Square Adapter. Packaged in an all new compact, low profile molded storage case. This set is great for use on impact wrenches, air ratchets as well as hand ratchets.



### 72 piece set contents:

**10 Pieces Standard Length:**

3/16", 7/32", 1/4", 9/32", 5/16", 11/32", 3/8", 7/16", 1/2", 9/16"

**10 Pieces Deep Length:**

3/16", 7/32", 1/4", 9/32", 5/16", 11/32", 3/8", 7/16", 1/2", 9/16"

**14 Pieces Metric Standard Length:**

4mm, 4.5mm, 5mm, 5.5mm, 6mm, 7mm, 8mm, 9mm, 10mm, 11mm, 12mm, 13mm, 14mm, 15mm

**14 Pieces Metric Deep Length:**

4mm, 4.5mm, 5mm, 5.5mm, 6mm, 7mm, 8mm, 9mm, 10mm, 11mm, 12mm, 13mm, 14mm, 15mm

**6 Pieces Standard Universal:**

1/4", 5/16", 3/8", 7/16", 1/2", 9/16"

**12 Pieces Metric Standard Universal:**

5mm, 5.5mm, 6mm, 7mm, 8mm, 9mm, 10mm, 11mm, 12mm, 13mm, 14mm, 15mm

**1 Piece Each:**

2", 4", & 6" Extensions  
1/4" Universal Joint  
1/4" F. x 3/8" M. Adapter  
1/4" Hex x 1/4" Square Adapter

Molded Storage Case

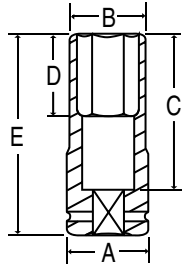




# 1" Drive Special Application Impact Sockets



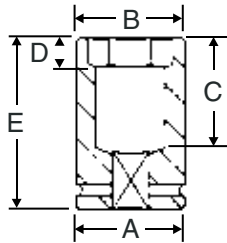
## 6 1" Drive Extra Deep Thin Wall Sockets SAE MM



Designed for truck wheel service when removing lug nuts that are deeply recessed and where space is very limited.

Item Number	Hex Size	Dimensions (Inches/Millimeters)				
		A	B	C	D	E
<b>4034DT</b>	<b>1-1/16"</b>	2.01	1.67	3.07	1.69	4.25
<b>4036DT</b>	<b>1-1/8"</b>	2.01	1.69	3.07	1.69	4.25
<b>4040DT</b>	<b>1-1/4"</b>	2.01	1.85	3.07	1.69	4.25
<b>4042DT</b>	<b>1-5/16"</b>	2.01	1.93	3.07	1.69	4.25
<b>4048DT</b>	<b>1-1/2"</b>	2.13	2.13	3.07	1.69	4.25
<b>4056DT</b>	<b>1-3/4"</b>	2.13	2.44	3.07	1.69	4.25
<b>4035MDT</b>	<b>35mm</b>	54	52	78	43	108
<b>4041MDT</b>	<b>41mm</b>	54	57	78	43	108

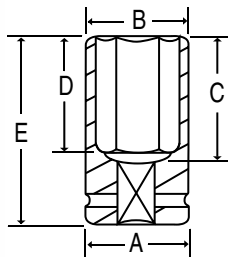
## 6 1" Drive Budd Wheel Socket - 1-1/2" Limited Hex SAE



Special 1-1/2" hex deep heavy duty impact socket designed for outer cap nuts on budd-style truck wheels. The 1-1/2" hex depth is limited to help prevent socket contact with the wheel. The socket is deep style to eliminate contact with the inner cap nut.

Item Number	Hex Size	Dimensions (Inches)				
		A	B	C	D	E
<b>4048DB</b>	<b>1-1/2"</b>	2.13	2.24	2.36	.55	3.54

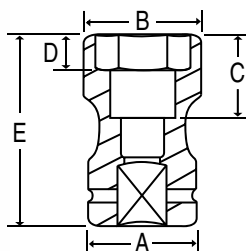
## 6 1" Drive Budd Wheel Socket - 1-1/2" Deep Hex SAE



Special 1-1/2" hex deep heavy duty impact socket designed for outer cap nuts on budd-style truck wheels. The 1-1/2" hex depth is deep in length. The socket is a deep style to eliminate contact with the inner cap nut.

Item Number	Hex Size	Dimensions (Inches)				
		A	B	C	D	E
<b>4048DS</b>	<b>1-1/2"</b>	2.36	2.36	2.83	2.60	4.02

## 6 1" Drive Combination Budd Wheel Sockets SAE MM



Removes and installs budd-type wheel fasteners. Sockets have two openings, eliminating the need for two separate sockets. Fractional and metric sizes.

Item Number	Hex Size	Square Size	Dimensions (Inches/Millimeters)				
			A	B	C	D	E
<b>4223C</b>	<b>1-1/2"</b>	<b>13/16"</b>	2.24	2.24	2.56	.55	3.98
<b>4235MC</b>	<b>35mm</b>	<b>17mm</b>	52	54	59	13	94
<b>4238MC</b>	<b>38mm</b>	<b>20mm</b>	54	58	59	14	101
<b>4241MC</b>	<b>41mm</b>	<b>21mm</b>	54	56	60	14	96