

# Air Filters

## Contamination Elimination



### Model F88 Air Filter

Model F88 Air Filter is highly effective at removing water, oil & contamination. It protects air cylinders and air tools and features a reusable edge-type filter element.

PN	Description
8130	Air filter, 75 cfm
U32719	Replacement filter element

- 5 micron filtration
- Air Inlet Size: 1/2 in NPT
- Air Outlet Size: 3/8 in NPT and 1/4 in NPT plugged
- Max. Operating Pressure: 160 psi (11.0 bar)
- Filter Capacity: 75 cfm
- Instruction Manual: PN 310603
- Reference p. 57



### Model F88M Mechanic's Air Filter

Model F88M Mechanic's Air Filter is designed for the mechanic who wants to protect their investment in air tools. This unit is portable and easily mounts anywhere. It is designed for use with quick couplers.

PN	Description
8135	Air filter with quick connect, 75 cfm
U32719	Replacement filter element

- 5 micron filtration
- Air Inlet Size: 1/4 in NPT
- Air Outlet Size: 1/4 in NPT and 1/4 in NPT plugged
- Max. Operating Pressure: 160 psi (11.0 bar)
- Filter Capacity: 75 cfm
- Instruction Manual: PN 310603
- Reference p. 57



### Model 606 Air Filter

The Model 606 Air Filter is most effective at removing water, oil & contamination. Its features include a large, reusable, edge-type filter element.

PN	Description
U06710	Air filter, 120 cfm
19930	Replacement filter element

- 5 micron filtration
- Air Inlet Size: 1/4 in NPT
- Air Outlet Size: 1/4 in NPT and 1/4 in NPT plugged
- Max. Operating Pressure: 160 psi (11.0 bar)
- Filter Capacity: 120 cfm
- Instruction Manual: PN 310601
- Reference p. 59

# Air Control Units

## Protection for Air Cylinders & Air Tools



### 880A Air Control Unit

Highly effective at removing water, oil and contamination to protect air cylinders and air tools. Contains 18C-3R Regulator with a 160 lb inverted gauge and air cock. Regulated outlet and filtered main line outlet included.

PN	Description
6950	Air Control Unit, 75 cfm
U32719	Replacement filter element

- 5 micron filtration
- Air Inlet Size: 1/2 in NPT (f)
- Air Outlet Size: 3/8 in NPT (f) and 1/4 in NPT (f) plugged
- Max. Operating Pressure: 200 psi (13.6 bar)
- Filter Capacity: 75 cfm
- Regulator Capacity: 50 cfm
- Instruction Manual: PN 310603
- Reference p. 58



### 606A Air Control Unit

Effective at removing water, oil and contamination to protect air cylinders and air tools. Contains 18C-3R Regulator with a 160 lb inverted gauge and air cock. Regulated outlet and filtered main line outlet included.

PN	Description
U06720	Air Control Unit, 120 cfm
19930	Replacement filter element

- 5 micron filtration
- Air Inlet Size: 1/2 in NPT
- Air Outlet Size: 1/4 in NPT
- Max. Operating Pressure: 200 psi (13.6 bar)
- Filter Capacity: 120 cfm
- Regulator Capacity: 50 cfm
- Instruction Manual: PN 310601
- Reference p. 60



### 606B Air Control Unit

Effective at removing water, oil and contamination to protect air cylinders and air tools. Contains 18C-3R Regulator with a 160 lb inverted gauge and air cock. Regulated outlet and filtered main line outlet with 200 lb gauge included.

PN	Description
6730	Air Control Unit, 120 cfm
19930	Replacement filter element

- 5 micron filtration
- Air Inlet Size: 1/2 in NPT
- Air Outlet Size: 1/4 in NPT
- Max. Operating Pressure: 200 psi (13.6 bar)
- Filter Capacity: 120 cfm
- Regulator Capacity: 50 cfm
- Instruction Manual: PN 310601
- Reference p. 60



### 606C Air Control Unit

Effective at removing water, oil and contamination to protect air cylinders and air tools. Contains two 18C-3R Regulators with a 160 lb inverted gauge and air cock. Two regulated outlets and a filtered main line outlet with 200 lb gauge included.

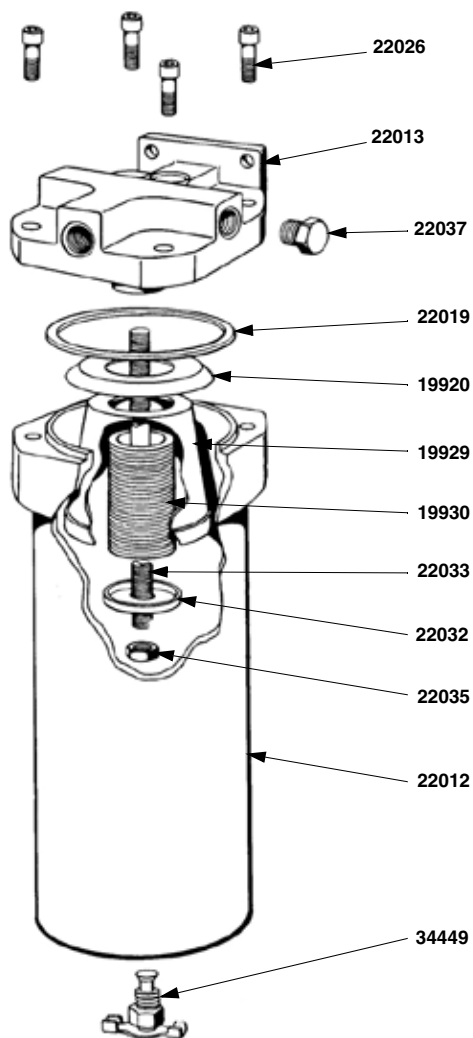
PN	Description
6740	Model 606C Air Control Unit
19930	Replacement Filter Element

- 5 micron filtration
- Air Inlet Size: 1/2 in NPT
- Air Outlet Size: 1/4 in NPT
- Max. Operating Pressure: 160 psi (13.6 bar)
- Filter Capacity: 120 cfm
- Regulator Capacity: 50 cfm
- Instruction Manual: PN 310601
- Reference p. 60

# REFERENCE

## REPLACEMENT PARTS DRAWINGS INDEX

### Model 606 Air Filter Part No. U06710



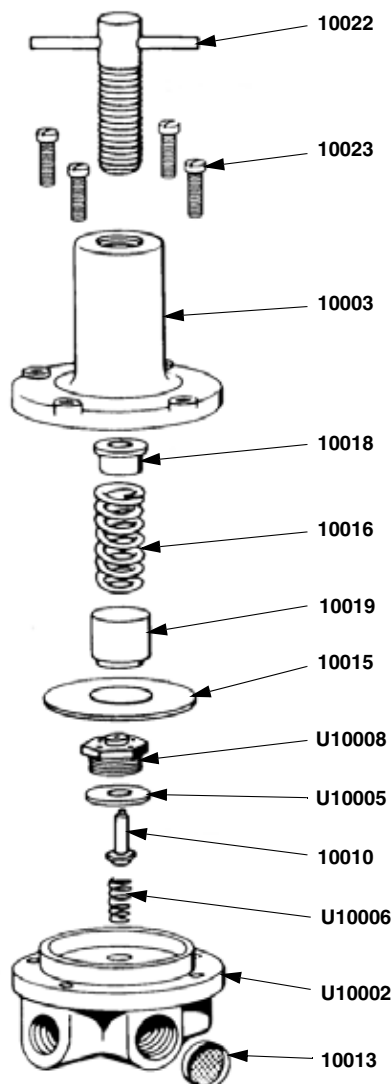
#### Part No.

#### Description

22026	Screw
22013	Bottle Lid
22037	Plug
22019	Gasket
19920	Washer
19929	Shield
19930	Filter Element
22033	Rod Assembly
22032	Retainer
22035	Nut
22012	Mach Filter Bottle
34449	Air Cock Regulator Valve

Maximum Working  
Pressure: 160 psi  
(1.1 MPa, 11 bar)

### 18C-3R Air Regulator Part No. 1630



#### Part No.

#### Description

10022	Adjusting Screw
10023	Screw
10003	Bonnet
10018	Washer Spring
10016	Pressure Spring
10019	Vibration Dampener
10015	Diaphragm
10008	Valve Body
10005	Valve Seat
10010	Valve
10006	Valve Spring
10002	Body
10013	Brass Screen

Maximum Working  
Pressure: 160 psi  
(1.1 MPa, 11 bar)