

Professional Ratchets

Made in the U.S.A.

You can count on the quality workmanship and value of these American made sockets.



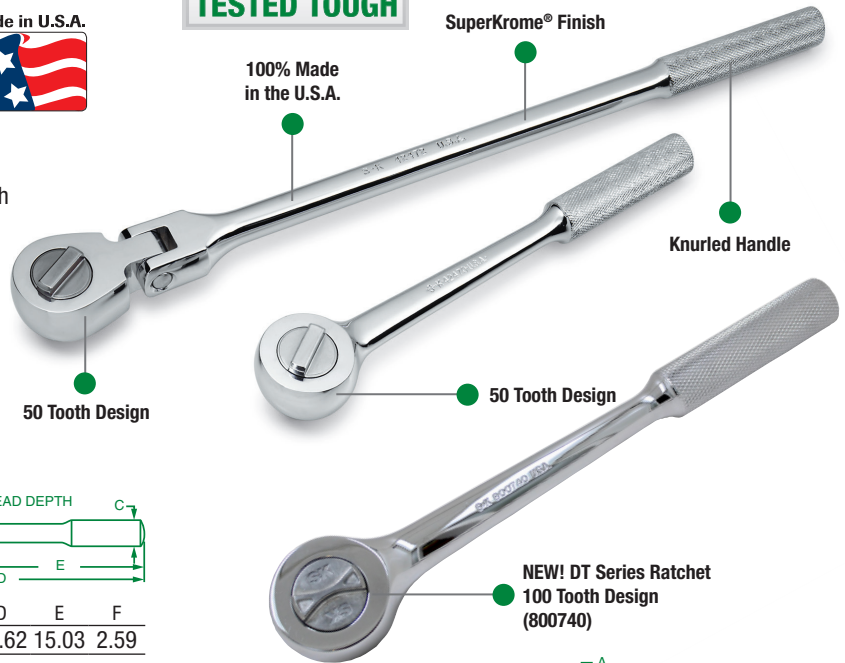
Smooth Ratcheting Action

Completely enclosed ratchet mechanism with triple tooth contact for smooth ratcheting action with little back movement. Diamond knurled grip for sure handling.

SuperKrome® Finish

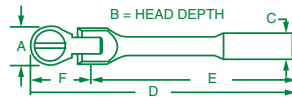
High polish SuperKrome® plating results in a jewelry-like finish, providing long life and maximum corrosion resistance.

**SUPERKROME
TESTED TOUGH**



SOCKETS, RATCHETS, AND BITS

1/2" Drive Professional Flex Head Ratchet



PART NO.	SIZE	A	B	C	D	E	F
42472	17.6"	1.86	0.80	0.75	17.62	15.03	2.59

Rebuild and Repair Kits for 42472

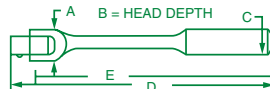
REBUILD KIT* PART NO.	REPAIR KIT** PART NO.
42470-2	42470-9

*Kit Includes: Cap, Inner Body, Clip Spring and Grease

**Kit Includes: Pawl, Stem Pin, Clip Spring and Grease



1/2" Drive Flex Head Handles



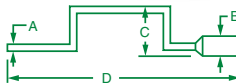
PART NO.	REPAIR KIT* PART NO.	REPAIR KIT** PART NO.	SIZE	A	B	C	D	E
41650	—	—	9"	1.10	0.87	0.75	9.00	7.95
41652	41653-9	41654-9A	16"	1.10	0.87	0.75	16.00	15.03
41654	41653-9	41654-9A	24"	1.10	0.87	1.00	23.50	22.50
41656	—	41654-9A	30"	1.10	0.87	1.02	30.62	30.00

*Kit Includes: Pin, Lockwasher, and Square Drive Head

**Kit Includes: Screw, Lockwasher, and Square Drive Head

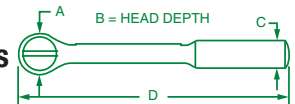


1/2" Drive Speeder Handle



PART NO.	SIZE	A	B	C	D
40181	18.1"	0.50	0.78	4.53	18.12

1/2" Drive Reversible Ratchets



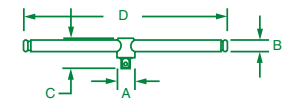
PART NO.	REBUILD KIT* PART NO.	REPAIR KIT** PART NO.	SIZE	A	B	C	D
42470	42470-2	42470-9	10.3"	1.85	0.80	0.84	10.25
40170	42470-2	42470-9	15"	1.94	0.80	0.81	15.06
800740	800740-2	—	10.3"	1.85	0.80	0.84	10.25

*Kit Includes: Cap, Inner Body, Clip Spring and Grease

**Kit Includes: Pawl, Stem Pin, Clip Spring and Grease



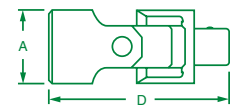
1/2" Drive Sliding T-Handle



PART NO.	SIZE	A	B	C	D
40150	10.8"	0.91	0.55	1.61	10.83



1/2" Drive Universal Joint



PART NO.	A	D
40190	1.00	2.61