

## No. 86850A-1

### 850 Pc. Senior Mechanics Tool Set

MASTER SETS

PART NO.	SET COUNT	DESCRIPTION
40972	1	¼" Drive Pro Flex Head Ratchet
49270	1	¼" Drive Thumbwheel Ratchet
4916T	6	¼" Drive Extension Set
40990	1	¼" Drive Universal Joint
4506	5	¼", ⅜" and ½" Drive Adapter Set
91844	44	¼" Drive 6 Point Standard and Deep Fract./Met. Socket Set
4934	7	¼" Drive 6 Point Flex Fractional Socket Set
1337	12	¼" Drive 6 Point Flex Metric Socket Set
89039	33	¼" and ⅜" Drive Master Bit Socket Set
19763	35	¼", ⅜", and ½" Drive TORX® Bit Socket SuperSet®
45183	1	⅜" Drive Pro Flex Head Ratchet
45178	1	⅜" Drive Pro Stubby Ratchet
4514	4	⅜" Drive Extension Set
4524	4	⅜" Drive Wobble Extension Set
45190	1	⅜" Drive Universal Joint
94549	49	⅜" Drive 6 Point Fractional/Metric Socket Set with Universal Joint
4607	7	⅜" Drive 6 Point Flex Fractional Socket Set
3910	10	⅜" Drive 6 Point Flex Metric Socket Set
19704	4	⅜" and ½" Drive Triple Square Bit Socket Set
19781	11	⅜" Drive Male and Female Pipe Plug Socket Set
42470	1	½" Drive 10.3" Pro Ratchet
40170	1	½" Drive 15" Pro Ratchet
42472	1	½" Drive Pro Flex Head Ratchet
41652	1	½" Drive Pro Stubby Ratchet
4114	3	½" Drive Extension Set
4121	19	½" Drive 12 Point Standard Fractional Socket Set
4819	19	½" Drive 12 Point Deep Fractional Socket Set
1959	19	½" Drive 6 Point Standard Metric Socket Set
1947	21	½" Drive 6 Point Deep Metric Socket Set
19798	8	½" Drive Male Pipe Plug Socket Set
4725	25	¾" Drive 12 Point Standard Fractional Socket Set
19766	6	¾" Drive Fractional Ball Hex Bit Socket Set
19752	8	¾" Drive Metric Ball Hex Bit Socket Set
19726	6	¾" Drive Metric Long Ball Hex Bit Socket Set
45674	3	¾" Drive Impact Extension Set
33990	1	¾" Drive Impact Universal Joint
4058	8	¾" Drive 6 Point Standard Fractional Impact Socket Set
4062	12	¾" Drive 6 Point Standard Metric Impact Socket Set
4078	8	¾" Drive 6 Point Deep Fractional Impact Socket Set
4082	12	¾" Drive 6 Point Deep Metric Impact Socket Set
33300	8	¾" Drive 6 Point Standard Fractional Swivel Impact Socket Set
33350	15	¾" Drive 6 Point Standard Metric Swivel Impact Socket Set
46170	1	½" Drive 3" Impact Extension with Ball Retainer
46171	1	½" Drive 5" Impact Extension with Ball Retainer
34990	1	½" Drive Impact Universal Joint
4039	19	½" Drive 6 Point Standard Fractional Impact Socket Set
4049	19	½" Drive 6 Point Deep Fractional Impact Socket Set
4037	25	½" Drive 6 Point Standard Metric Impact Socket Set
4047	26	½" Drive 6 Point Deep Metric Impact Socket Set
34300	13	½" Drive 6 Point Standard Fractional Swivel Impact Socket Set

PART NO.	SET COUNT	DESCRIPTION
34350	15	½" Drive 6 Point Standard Metric Swivel Impact Socket Set
46125	1	½" Drive Fractional Flip Impact Socket
46119	1	½" Drive Metric Flip Impact Socket
756	16	½" Drive TurboSocket® Set
803	13	⅜" Drive TurboSocket® Set
4498	8	Spark Plug Socket Set
86043	23	6 and 12 Point SuperKrome® Fractional Combination Wrench Set
86225	23	12 Point SuperKrome® Metric Combination Wrench Set
86017	13	12 Point SuperKrome® Fractional Long Pattern Combination Wrench Set
86037	19	12 Point SuperKrome® Metric Long Pattern Combination Wrench Set
86231	11	12 Point SuperKrome® Fractional Short Pattern Combination Wrench Set
86240	10	12 Point SuperKrome® Metric Short Pattern Combination Wrench Set
86241	5	12 Point SuperKrome® Metric Short Pattern Combination Wrench Set
386	5	SuperKrome® Fractional 15° Offset Flare Nut Wrench Set
378	6	SuperKrome® Fractional 15° Offset Flare Nut Wrench Set
4508	10	Fractional Flare Nut Crowfoot Wrench Set
4511	11	Metric Flare Nut Crowfoot Wrench Set
8008	1	8" Adjustable Wrench
8012	1	12" Adjustable Wrench
8015	1	15" Adjustable Wrench
77250	9	Adjustable Micrometer Torque Wrench 25–250 ft. lb.
86320	6	SureGrip® Screwdriver Set
86321	5	SureGrip® Long Reach Screwdriver Set
86322	5	SureGrip® Heavy Duty Screwdriver Set
86323	7	SureGrip® TORX® Screwdriver Set
86325	4	SureGrip® Stubby Screwdriver Set
19613	13	Fractional Ball Hex Key Set
19609	9	Metric Ball Hex Key Set
7509	1	9½" V-Jaw Tongue and Groove Pliers
7511	1	10½" V-Jaw Tongue and Groove Pliers
7516	1	16" Tongue and Groove Pliers
7210	1	10" Slip Joint Pliers
16315	1	6" Curved Chain Nose Pliers without Cutter
17835	5	General Purpose Pliers Set
17832	2	Extra Long Needle Nose Pliers Set
7612	12	Convertible Retaining Ring Pliers Set
7695	1	Wire Cutter/Stripper
8616	1	12" 16 oz Soft Face Hammer
8516	1	12" 12 oz Ball Peen Hammer
8542	1	13.5" Cross Peen Hammer with Hickory Handle
6020	20	Punch and Chisel Set
6069	9	Roll Pin Punch Set
6093	3	Pry Bar Set

## No. 86650A-1

### 650 Pc. Senior Mechanics Tool Set

MASTER SETS

PART NO.	SET COUNT	DESCRIPTION
40972	1	¼" Drive Pro Flex Head Ratchet
49270	1	¼" Drive Thumbwheel Ratchet
4916T	6	¼" Drive Extension Set
40990	1	¼" Drive Universal Joint
4506	5	¼", ⅜" and ½" Drive Adapter Set
91844	44	¼" Drive 6 Point Standard and Deep Fractional/Metric Socket Set
4934	7	¼" Drive 6 Point Flex Fractional Socket Set
1337	12	¼" Drive 6 Point Flex Metric Socket Set
84213	13	¼", ⅜" and ½" Drive Female TORX® Socket Set
19769	9	¼" and ⅜" Tamper-Proof TORX® Bit Socket Set
19760	10	¼", ⅜" and ½" Drive Female TORX® Socket Set
45183	1	⅜" Drive Pro Flex Head Ratchet
45178	1	⅜" Drive Pro Stubby Ratchet
4514	4	⅜" Drive Extension Set
4524	4	⅜" Drive Wobble Extension Set
45190	1	⅜" Drive Universal Joint
94549	49	⅜" Drive 6 Point Fractional/Metric Socket Set with Universal Joint
4607	7	⅜" Drive 6 Point Flex Fractional Socket Set
3910	10	⅜" Drive 6 Point Flex Metric Socket Set
19733	9	⅜" and ½" Drive Fractional Hex Bit Socket Set
41255	5	½" Drive Fractional Hex Bit Socket Set
19734	9	⅜" and ½" Drive Metric Hex Bit Socket Set
19704	4	⅜" and ½" Drive Triple Square Bit Socket Set
19781	11	⅜" Drive Male and Female Pipe Plug Socket Set
42470	1	½" Drive 10.3" Pro Ratchet
40170	1	½" Drive 15" Pro Ratchet
42472	1	½" Drive Pro Flex Head Ratchet
41652	1	½" Drive Pro Stubby Ratchet
4114	3	½" Drive Extension Set
4122	15	½" Drive 12 Point Standard Fractional Socket Set
4815	15	½" Drive 12 Point Deep Fractional Socket Set
1959	19	½" Drive 6 Point Standard Metric Socket Set
1945	15	½" Drive 6 Point Deep Metric Socket Set
33990	1	⅝" Drive Impact Universal Joint
4058	8	⅝" Drive 6 Point Standard Fractional Swivel Impact Socket Set
4062	12	⅝" Drive 6 Point Standard Metric Impact Socket Set
4078	8	⅝" Drive 6 Point Deep Fractional Impact Socket Set
4082	12	⅝" Drive 6 Point Deep Metric Impact Socket Set
33300	8	⅝" Drive 6 Point Standard Fractional Swivel Impact Socket Set
33351	10	⅝" Drive 6 Point Standard Metric Swivel Impact Socket Set
46170	1	½" Drive 3" Impact Extension with Ball Retainer
46171	1	½" Drive 5" Impact Extension with Ball Retainer
34990	1	½" Drive Impact Universal Joint
4035	15	½" Drive 6 Point Standard Fractional Impact Socket Set
4045	15	½" Drive 6 Point Deep Fractional Impact Socket Set

PART NO.	SET COUNT	DESCRIPTION
4037	25	½" Drive 6 Point Standard Metric Impact Socket Set
4048	15	½" Drive 6 Point Deep Metric Impact Socket Set
46125	1	½" Drive Fractional Flip Impact Socket
46119	1	½" Drive Metric Flip Impact Socket
756	16	½" Drive TurboSocket® Set
86013	13	6 and 12 Point SuperKrome® Fractional Combination Wrench Set
86223	16	12 Point SuperKrome® Metric Combination Wrench Set
86016	9	12 Point SuperKrome® Fractional Long Pattern Combination Wrench Set
86040	12	12 Point SuperKrome® Metric Long Pattern Combination Wrench Set
86231	11	12 Point SuperKrome® Fractional Short Pattern Combination Wrench Set
86240	10	12 Point SuperKrome® Metric Short Pattern Combination Wrench Set
386	5	SuperKrome® Fractional 15° Offset Flare Nut Wrench Set
378	6	SuperKrome® Fractional 15° Offset Flare Nut Wrench Set
4508	10	Fractional Flare Nut Crowfoot Wrench Set
4511	11	Metric Flare Nut Crowfoot Wrench Set
8008	1	8" Adjustable Wrench
8012	1	12" Adjustable Wrench
8015	1	15" Adjustable Wrench
77250	1	Adjustable Micrometer Torque Wrench, 20–250 ft. lb.
86320	6	SureGrip® Screwdriver Set
86321	5	SureGrip® Long Reach Screwdriver Set
86322	5	SureGrip® Heavy Duty Screwdriver Set
19613	13	Fractional Ball Hex Key Set
19609	9	Metric Ball Hex Key Set
16315	1	6" Curved Chain Nose Pliers without Cutter
17835	5	General Purpose Pliers Set
17832	2	Extra Long Needle Nose Pliers Set
7509	1	9½" Tongue and Groove Pliers V-Jaw
7511	1	10½" Tongue and Groove Pliers V-Jaw
7516	1	16" Tongue and Groove Pliers
7210	1	10" Slip Joint Pliers
7612	12	Convertible Retaining Ring Pliers Set
7695	1	Wire Cutter/Stripper
15032	1	8" Battery Cable Cutter
8616	1	12" 16 oz. Soft Face Hammer
8516	1	12" 12 oz. Ball Peen Hammer
6020	20	Punch and Chisel Set
6069	9	Roll Pin Punch Set
6093	3	Pry Bar Set



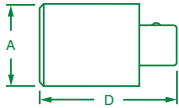
## Adapters

### Added Versatility

Extend the performance capabilities of your S•K tool set with our line of adapters.

### SuperKrome® Finish

High polish SuperKrome® plating results in a jewelry-like finish, providing long life and maximum corrosion resistance.



### Adapters

PART NO.	SIZE	A	D
385	1/4"F-3/8"M Drive	0.50	0.94
384	3/8"F-1/4"M Drive	0.68	1.12
451	3/8"F-1/2"M Drive	0.68	1.31
401	1/2"F-3/8"M Drive	0.87	1.36
407	1/2"F-3/4"M Drive	1.00	1.87
409	3/4"F-1/2"M Drive	1.38	2.00
40995	1/4"F-1/4"M Drive, Locking	0.50	1.78
45195	3/8" Drive, Chrome, Locking	0.50	1.78



SuperKrome® Finish

**SUPERKROME  
TESTED TOUGH**

Added Versatility



### No. 4506

#### 5 Piece, Chrome Adapter Set Includes:

PART NO.	SIZE	PART NO.	SIZE
385	1/4"F-3/8"M Drive	407	1/2"F-3/4"M Drive
384	3/8"F-1/4"M Drive	451	3/8"F-1/2"M Drive
401	1/2"F-3/8"M Drive		

Packaged on a rail.



### No. 4010

#### 9 Piece, Universal/Adapter Set Includes:

PART NO.	DESCRIPTION	PART NO.	DESCRIPTION
33990	3/8" Impact Universal	384	3/8"F-1/4"M Drive, Adapter
34990	1/2" Impact Universal	451	3/8"F-1/2"M Drive, Adapter
40990	1/4" Chrome Universal	401	1/2"F-3/8"M Drive, Adapter
45190	3/8" Chrome Universal	407	1/2"F-3/4"M Drive Adapter
385	1/4"F-3/8"M Drive Adapter		

Packaged in a molded plastic case.



### No. 4518

#### 8 Piece, Chrome Universal/Adapter Set Includes:

PART NO.	DESCRIPTION	PART	DESCRIPTION
385	1/4"F-3/8"M Drive, Adapter	451	3/8"F-1/2"M Drive, Adapter
384	3/8"F-1/4"M Drive, Adapter	40990	1/4" Drive Universal Joint
401	1/2"F-3/8"M Drive, Adapter	45190	3/8" Drive Universal Joint
407	1/2"F-3/4"M Drive, Adapter	40190	1/2" Drive Universal Joint

Packaged on a rail

SOCKETS, RATCHETS, AND BITS

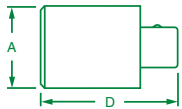
## Adapters

### Added Versatility

Extend the performance capabilities of your S•K tool set with our line of adapters.

### SuperKrome® Finish

High polish SuperKrome® plating results in a jewelry-like finish, providing long life and maximum corrosion resistance.



**SUPERKROME  
TESTED TOUGH**

### Adapters

PART NO.	SIZE	A	D
385	1/4"F-3/8"M Drive	0.50	0.94
384	3/8"F-1/4"M Drive	0.68	1.12
451	3/8"F-1/2"M Drive	0.68	1.31
401	1/2"F-3/8"M Drive	0.87	1.36
407	1/2"F-3/4"M Drive	1.00	1.87
409	3/4"F-1/2"M Drive	1.38	2.00
40995	1/4"F-1/4"M Drive, Locking	0.50	1.78
45195	3/8" Drive, Chrome, Locking	0.50	1.78

\*Kit Includes: One Replacement Screw

### No. 4506

#### 5 Piece, Chrome Adapter Set Includes:

PART NO.	SIZE	PART NO.	SIZE
385	1/4"F-3/8"M Drive	407	1/2"F-3/4"M Drive
384	3/8"F-1/4"M Drive	451	3/8"F-1/2"M Drive
401	1/2"F-3/8"M Drive		

Packaged on a rail.



### No. 4518

#### 8 Piece, Chrome Universal/Adapter Set Includes:

PART NO.	DESCRIPTION	PART	DESCRIPTION
385	1/4"F-3/8"M Drive, Adapter	451	3/8"F-1/2"M Drive, Adapter
384	3/8"F-1/4"M Drive, Adapter	40990	1/4" Drive Universal Joint
401	1/2"F-3/8"M Drive, Adapter	45190	3/8" Drive Universal Joint
407	1/2"F-3/4"M Drive, Adapter	40190	1/2" Drive Universal Joint

Packaged on a rail.



### No. 4010

#### 9 Piece, Universal/Adapter Set Includes:

PART NO.	DESCRIPTION	PART	DESCRIPTION
33990	3/8" Impact Universal	384	3/8"F-1/4"M Drive, Adapter
34990	1/2" Impact Universal	451	3/8"F-1/2"M Drive, Adapter
40990	1/4" Chrome Universal	401	1/2"F-3/8"M Drive, Adapter
45190	3/8" Chrome Universal	407	1/2"F-3/4"M Drive Adapter
385	1/4"F-3/8"M Drive Adapter		

Packaged in a molded plastic case.



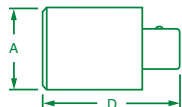
## Adapters

### Added Versatility

Extend the performance capabilities of your S•K tool set with our line of adapters.

### SuperKrome® Finish

High polish SuperKrome® plating results in a jewelry-like finish, providing long life and maximum corrosion resistance.



### No. 4506

#### 5 Piece, Chrome Adapter Set Includes:

PART NO.	SIZE	PART NO.	SIZE
<b>385</b>	1/4"F-3/8"M Drive	<b>407</b>	1/2"F-3/4"M Drive
<b>384</b>	3/8"F-1/4"M Drive	<b>451</b>	3/8"F-1/2"M Drive
<b>401</b>	1/2"F-3/8"M Drive		

Packaged on a rail.

### Adapters

PART NO.	SIZE	A	D
<b>385</b>	1/4"F-3/8"M Drive	0.50	0.94
<b>384</b>	3/8"F-1/4"M Drive	0.68	1.12
<b>451</b>	3/8"F-1/2"M Drive	0.68	1.31
<b>401</b>	1/2"F-3/8"M Drive	0.87	1.36
<b>407</b>	1/2"F-3/4"M Drive	1.00	1.87
<b>409</b>	3/4"F-1/2"M Drive	1.38	2.00
<b>40995</b>	1/4"F-1/4"M Drive, Locking	0.50	1.78
<b>45195</b>	3/8" Drive, Chrome, Locking	0.50	1.78



### No. 4518

#### 8 Piece, Chrome Universal/Adapter Set Includes:

PART NO.	DESCRIPTION	PART	DESCRIPTION
<b>385</b>	1/4"F-3/8"M Drive, Adapter	<b>451</b>	3/8"F-1/2"M Drive, Adapter
<b>384</b>	3/8"F-1/4"M Drive, Adapter	<b>40990</b>	1/4" Drive Universal Joint
<b>401</b>	1/2"F-3/8"M Drive, Adapter	<b>45190</b>	3/8" Drive Universal Joint
<b>407</b>	1/2"F-3/4"M Drive, Adapter	<b>40190</b>	1/2" Drive Universal Joint

Packaged on a rail.

### No. 4010

#### 9 Piece, Universal/Adapter Set Includes:

PART NO.	DESCRIPTION	PART NO.	SIZE
<b>33990</b>	3/8" Impact Universal	<b>384</b>	3/8"F-1/4"M Drive, Adapter
<b>34990</b>	1/2" Impact Universal	<b>451</b>	3/8"F-1/2"M Drive, Adapter
<b>40990</b>	1/4" Chrome Universal	<b>401</b>	1/2"F-3/8"M Drive, Adapter
<b>45190</b>	3/8" Chrome Universal	<b>407</b>	1/2"F-3/4"M Drive Adapter
<b>385</b>	1/4"F-3/8"M Drive Adapter		

Plastic molded plastic case.

## Adapters

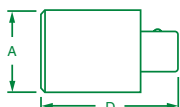
### Added Versatility

Extend the performance capabilities of your S•K tool set with our line of adapters.

### SuperKrome® Finish

High polish SuperKrome® plating results in a jewelry-like finish, providing long life and maximum corrosion resistance.

**SUPERKROME  
TESTED TOUGH**



**SOCKETS, RATCHETS, AND BITS**

### Adapters

PART NO.	SIZE	A	D
385	1/4"F-3/8"M Drive	0.50	0.94
384	3/8"F-1/4"M Drive	0.68	1.12
451	3/8"F-1/2"M Drive	0.68	1.31
401	1/2"F-3/8"M Drive	0.87	1.36
407	1/2"F-3/4"M Drive	1.00	1.87
409	3/4"F-1/2"M Drive	1.38	2.00
40995	1/4"F-1/4"M Drive, Locking	0.50	1.78
45195	3/8" Drive, Chrome, Locking	0.50	1.78

### No. 4506

#### 5 Piece, Chrome Adapter Set Includes:

PART NO.	SIZE	PART NO.	SIZE
385	1/4"F-3/8"M Drive	407	1/2"F-3/4"M Drive
384	3/8"F-1/4"M Drive	451	3/8"F-1/2"M Drive
401	1/2"F-3/8"M Drive		

Packaged on a rail.



### No. 4518

#### 8 Piece, Chrome Universal/Adapter Set Includes:

PART NO.	DESCRIPTION	PART	DESCRIPTION
385	1/4"F-3/8"M Drive, Adapter	451	3/8"F-1/2"M Drive, Adapter
384	3/8"F-1/4"M Drive, Adapter	40990	1/4" Drive Universal Joint
401	1/2"F-3/8"M Drive, Adapter	45190	3/8" Drive Universal Joint
407	1/2"F-3/4"M Drive, Adapter	40190	1/2" Drive Universal Joint

Packaged on a rail.



### No. 4010

#### 9 Piece, Universal/Adapter Set Includes:

PART NO.	DESCRIPTION	PART NO.	SIZE
33990	3/8" Impact Universal	384	3/8"F-1/4"M Drive, Adapter
34990	1/2" Impact Universal	451	3/8"F-1/2"M Drive, Adapter
40990	1/4" Chrome Universal	401	1/2"F-3/8"M Drive, Adapter
45190	3/8" Chrome Universal	407	1/2"F-3/4"M Drive Adapter
385	1/4"F-3/8"M Drive Adapter		

Plastic molded plastic case.



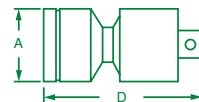
## Impact Universal Joints

### Ball or Pin Retainer

Choose the style you prefer.

### Improved Access

Much easier to work with hard-to-reach fasteners.



### Impact Universal Joints

PART NO.	DRIVE	DESCRIPTION	RING	PIN	A	D
32990	1/4"	With Ball Retainer	—	—	0.72	1.52
45690	3/8"	For Use With Pin Retainer	—	—	0.91	1.92
33990	3/8"	With Ball Retainer	—	—	0.91	1.92
46990	1/2"	For Use With Pin Retainer	—	—	1.13	2.61
34990	1/2"	With Ball Retainer	—	—	1.13	2.61
84690	3/4"	Retaining Ring/Pin	84346	84540	1.78	4.21
85690	1"	Retaining Ring/Pin	84354	85540	2.28	4.65

Rings and pins sold separately.

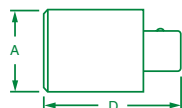
## Impact Adapters

### Ball or Pin Retainer

S•K impact adapters are available in both ball and pin styles.

### Added Versatility

Gives your tool set the power to handle a wider range of jobs.



### Impact Adapters For Use With Pin Retainer

PART NO.	SIZE	RING	PIN	A	D
45686	1/2"F-3/8"M	—	—	1.00	1.63
46184	1/2"F-3/4"M	—	—	1.00	1.97
84607	3/4"F-1"M	84346	84540	1.50	2.50
85609	1"F-3/4"M	84352	84540	2.00	2.75

\*Rings and Pins Sold Separately

### Impact Adapters with Ball Retainer

PART NO.	DESCRIPTION	RING	PIN	A	D
45684	3/8"F-1/2"M Drive, Adapter	—	—	0.87	1.61
45685	1/2"F-3/8"M Drive, Adapter	—	—	1.00	1.63
46186	1/2"F-3/4"M Drive, Adapter	—	—	1.00	1.97
84609A	3/4"F-1/2"M Drive, Adapter	84326	84540	1.40	2.09
84609-9	Repair kit for 84609A*	—	—	—	—

\*Repair kit comes with 1/2" Square Drive Head



## No. 4519

### 6 Piece Impact Universal/Adapter Set Includes:

PART NO.	SIZE	PART NO.	SIZE	PART NO.	SIZE
33990	3/8" Drive Universal	45684	3/8"F-1/2"M Drive Adapter	46186	1/2"F-3/4"M Drive Adapter
34990	1/2" Drive Universal	45686	1/2"F-3/8"M Drive Adapter	84690A	3/4"F-1/2"M Drive Adapter

Packaged on a rail.



## No. 4010

### 9 Piece, Impact Universal/Adapter Set Includes:

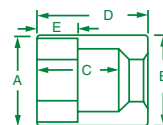
PART NO.	DESCRIPTION	PART NO.	DESCRIPTION
33990	3/8" Impact Universal	384	3/8"F-1/4"M Drive, Adapter
34990	1/2" Impact Universal	451	3/8"F-1/2"M Drive, Adapter
40990	1/4" Chrome Universal	401	1/2"F-3/8"M Drive, Adapter
45190	3/8" Chrome Universal	407	1/2"F-3/4"M Drive Adapter
385	1/4"F-3/8"M Drive Adapter		

Packaged in a molded plastic case.

## Impact Utility Socket

### For Buffalo Covers

Designed specifically for use on Tamper-Proof Buffalo Covers used by water and gas utility companies.



### 5 Point, 1/2" Drive, Impact Utility Socket

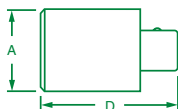
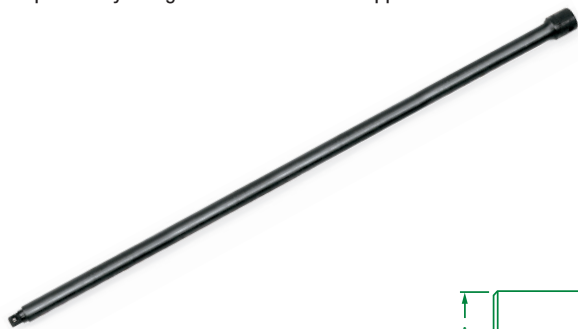
PART NO.	HEX SIZE	A	B	C	D	E
34205	13/16"	1.13	1.13	0.81	2.00	0.81

IMPACT SOCKETS

## Impact Extension Adapters

### Versatility and Access

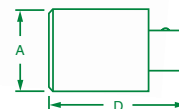
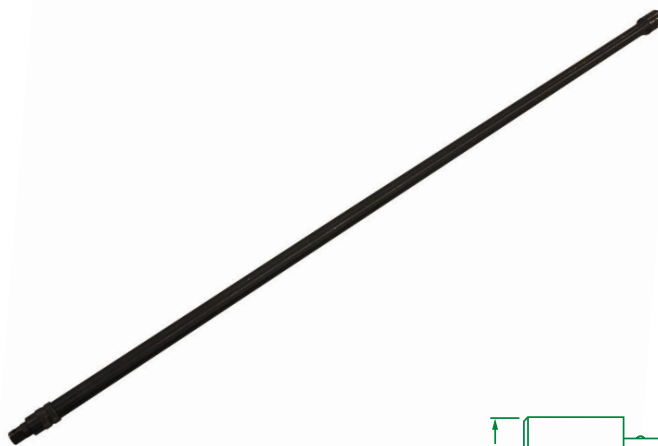
Extension adapters combine the versatility provided by an adapter with the accessibility provided by an extension. No. 46174 and No. 46175 are specifically designed for transmission applications.



### Impact Extension Adapters

PART NO.	SIZE	RING	PIN	A	D
46174	1/2"F-3/8"M	—	—	1.00	22.60
46175	1/2"F-3/8"M	—	—	1.00	36.00
85607	1"F-3/4"M	85341	85541	2.00	6.06

Ring and pin sold separately.



### Locking Impact Extension Adapters

PART NO.	SIZE	A	D
46177	1/2"F-3/8"M	0.71	24.00
46178	1/2"F-3/8"M	0.71	33.00



## Impact Socket Sets

### Improved Access

Both metric and fractional 1/2" Drive Sockets feature a unique longer-length nose-down design which provides better access to hard-to-reach fasteners.

### Safe, Secure Storage

All four sets featured are packaged in a molded plastic case for easy tool identification and safe, secure storage.



IMPACT SOCKETS

## No. 4050

17 Piece, 1/2" Drive, 6 Point, Standard and Deep Fractional Impact Socket Set Includes:

STANDARD PART NO.	SIZE	STANDARD PART NO.	SIZE	STANDARD PART NO.	SIZE	STANDARD PART NO.	SIZE	DEEP PART NO.	SIZE	DEEP PART NO.	SIZE	DEEP PART NO.	SIZE	DEEP PART NO.	SIZE
34012	3/8"	34016	1/2"	34020	5/8"	34024	3/4"	34212	3/8"	34216	1/2"	34220	5/8"	34224	3/4"
34014	7/16"	31018	9/16"	34022	11/16"			34214	7/16"	34218	9/16"	34222	1 1/16"		
34990	Universal			46170	3" Extension			46171	5" Extension						

Packaged in a molded plastic case.



## No. 4051

28 Piece, 1/2" Drive, 6 Point, Standard and Deep Fractional Impact Socket Set Includes:

STANDARD PART NO.	SIZE	STANDARD PART NO.	SIZE	STANDARD PART NO.	SIZE	STANDARD PART NO.	SIZE	DEEP PART NO.	SIZE	DEEP PART NO.	SIZE	DEEP PART NO.	SIZE	DEEP PART NO.	SIZE
34012	3/8"	34020	5/8"	34028	7/8"	34036	1 1/8"	34212	3/8"	34220	5/8"	34228	7/8"	34236	1 1/8"
34014	7/16"	34022	1 1/16"	34030	15/16"	34040	1 1/4"	34214	7/16"	34222	1 1/16"	34230	15/16"	34240	1 1/4"
34016	1/2"	34024	3/4"	34032	1"			34216	1/2"	34224	3/4"	34232	1"		
34018	9/16"	34026	13/16"	34034	1 1/16"			34218	9/16"	34226	13/16"	34234	1 1/16"		

Packaged in a molded plastic case.