

## High-pressure pump accessories

### Follower plates

Recommended when pumping lubricants that will not seek their own level.

#### Model 84775

Deluxe universal follower for use with 25 to 50 lb. (11 to 22 kg) containers for 1, 1 1/4, and 1 1/2 in. diameter pump tubes. All rubber unit ensures complete grease dispensing to the bottom of dented or plastic lined drums; wipes pail or drum clean. Metal cap holds insert firmly in place, ensuring seal and maintaining vacuum.

#### Model 84780

Same as 84775 except for use with 120 lb. (54 kg) containers for 1, 1 1/4 and 2 1/8 in. diameter pump tubes. Used with series 20 and 40 air-operated grease pumps.

#### Model 83366

Deluxe pressed steel follower plate for 400 lb. (181 kg) drums includes a seal in the hub to prevent channelling of grease past the pump tube.

### Drum Covers

#### Model 46007

Drum cover for 120 lb. (54 kg) or 16 gallon (60 liter) open top refinery containers for all series 20, 25 and 40 pumps.

#### Model 81523

Drum cover for 400 lb. (181 kg) or 55 gallon (208 liter) open top refinery containers for all series 20, 25 and 40 pumps.

### Pump elevator

#### Model 83447

Pump elevator assembly lifts pump assembly clear of drum for easy, one person drum changes. Helps prevent introduction of foreign material into grease during drum changes. Height with drum is 39 3/8 in. (1 000 mm), 67 1/4 in. (1 708 mm) with elevator raised. Drum not included. For 120 lb. (54 kg) drum.

Model 84775



Model 83366



Model 46007



Model 81523



Model 83447



### Follower plates

| Model  | Drum size | Tube ID         | Type              |
|--------|-----------|-----------------|-------------------|
| –      | lb. (gal) | in.             | –                 |
| 84775  | 400 (55)  | 1, 1 1/4, 1 1/2 | Tapered flexible  |
| 84780  | 120 (16)  | 1, 1 1/4, 2 1/8 | Tapered flexible  |
| 83366  | 400 (55)  | 1               | Rigid             |
| 275183 | 35 (5)    | 1 1/2           | Flexible-low cost |
| 275184 | 35 (5)    | 1 1/4           | Flexible-low cost |

## Follower plates

Recommended when pumping lubricants that will not seek their own level.

### Model 84775

Deluxe universal follower for use with 25 to 50 lb. (11 to 22 kg) containers for 1, 1 1/4, and 1 1/2 in. diameter pump tubes. All rubber unit ensures complete grease dispensing to the bottom of dented or plastic lined drums; wipes pail or drum clean. Metal cap holds insert firmly in place, ensuring seal and maintaining vacuum.

### Model 84780

Same as model 84775 except for use with 120 lb. (54 kg) containers for 1, 1 1/4, and 2 1/8 in. diameter pump tubes.

### Model 83369

For 400 lb. (181 kg) drums. Diameter 21 5/8 in.

### Model 81482 400 lb. (181 kg)

Includes mounting flange and tie rods for mounting any PowerMaster II pump. Includes model 84318 drum cover and model 84273 adapter flange.

### Model 84768

Same as 81482 except for PowerMaster III pumps.

### Model 84291 120 lb. (54 kg)

Same as model 81482, except for 120 lb. (54 kg) drums. Includes model 84299 drum cover and model 84273 adapter flange.

### Model 84767

Same as 84291 except for PowerMaster III pumps.

### Model 84273 flange mounting assembly

For rigidly mounting any PowerMaster II stub pump or drum pump to top of a fabricated bulk tank.

### Model 84963

Same as 84273 except for PowerMaster III pumps.

### Model 83119 tie rod assembly

Same as model 83131 except for 120 lb. (54 kg) drums.

### Model 360248 drum locator

Positions and secures 400 lb. (181 kg) drums when truck is in motion. Two identical angles in a circular segment with an 11 1/2 in. radius. Holes provided for fastening angle to platform. Welding optional.

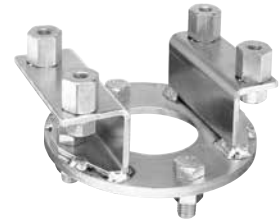
Model 84780



Model 83369



Model 84273



Model 360248



## Heavy-duty, air-operated grease pumps

### Model 9989\* 50:1 25, 50 lb. (11, 22 kg) portable pump with pail cover

Package includes:

- Bare pump model V350035000
  - Drum cover model 275370
  - Flexible follower model 84775
  - Air coupler/nipple model 5874/5875
  - 7 ft. (2,13 m) grease hose model 75084
  - Straight swivel model 82399
  - Universal swivel model 81387
  - Control valve model 740

### Model 9917 50:1 120 lb. (54 kg) portable with caster base

Package includes:

- Bare pump model V350120000
  - Drum cover model 46007
  - Flexible follower model 84780
  - Air coupler/nipple model 5874/5875
  - 7 ft. (2,13 m) grease hose model 75084
  - Straight swivel model 82399
  - Universal swivel model 81387
  - Control valve model 740
  - Caster base 80895

### Model 9917-57 50:1 120 lb. (54 kg) portable without caster base model 80895

## Air-operated grease pumps for 120 lb. (54 kg) drums

The following models contain Lincoln's high-pressure series 20 grease pumps.

### Model 917 120 lb. (54 kg) drum

Will dispense 45 oz. (1,3 kg) or 80 cu. in. (1 311 cm<sup>3</sup>) of NLGI 0 – 2 grease per

minute at 150 psi (10 bar). Assures positive prime at lowest temperature. Drum cover model 46007 finished in Lincoln red; roll-a-round base model 80895 base in black; air motor cover in white. Height 43 1/8 in. (1 095 mm). Base 17 in. (432 mm) square. Drum not included.

### Model 917–57 120 lb. (54 kg) drum

Same as model 917 without roll-a-round base.

### Model 6917 air-operated portable grease pump package

Lincoln's new heavy-duty portable grease pump delivers the same volume and pressure as the more expensive pumps – but at an affordable price.

- Lincoln's time-tested, 2 1/2 in. (63,5 mm), 50:1, air-operated, double-acting grease pump ensures dependable, high-output grease delivery.
- Lube the hard-to-reach fittings with the heavy-duty control valve and universal swivel.
- Standard follower wipes 120 lb. (54 kg) drum sides clean and keeps the pump primed.
- Four-wheel dolly maneuvers easily around the shop.

### Model 346P 120 lb. (54 kg) drum

Same as model 917 except with model 674 hand truck which provides convenient transportation for unit. Hand truck has two semi-pneumatic disc wheels and screw-type clamp which locks unit to truck. Drum not included.

Model 9989



Model 9917



Model 917



Model 6917



Model 346P



### Air-operated grease pumps for 120 lb. (54 kg) drums

| Model  | Bare pump | Drum cover | Base | Follower | Drum size |    |
|--------|-----------|------------|------|----------|-----------|----|
|        |           |            |      |          | lb.       | kg |
| 917-57 | 82050     | 46007      | –    | 84780    | 120       | 54 |

Delivery kit for unit includes: model 75084 high-pressure hose, model 11659 nipple, model 740 control valve, model 815 air coupler, model 82399 straight swivel and model 81387 universal swivel.

Note: Free delivery 80 cu. in./min. (1 311 cm<sup>3</sup>/min.)

### \* ⚠ WARNING

California Proposition 65:  
Cancer and reproductive harm  
[www.P65Warnings.ca.gov](http://www.P65Warnings.ca.gov)

Model 987



## Air-operated double-acting pumps for 35 lb. (16 kg) pails

### Model 987 25 to 50 lb. (11 to 22 kg) pail/ 60 lb. (27 kg) bulk

For 25 to 30 lb. (11 to 13 kg) refinery containers or 60 lb. (27 kg) bulk. Gasket and air vent in lid assembly makes unit completely dust-proof, leak-proof and spill-proof. Ideal for use in all types of weather; container rust-proofed and finished in Lincoln red. Height 31 3/4 in. (806 mm); inside diameter of container 12 1/2 in. (318 mm).

### Model 989 25 to 50 lb. (11 to 22 kg) drum

Steel cover has three thumb screws to clamp securely to any original 25 to 50 lb. (11 to 22 kg) refinery container. Carrying handle provides easy portability. Follower plate assures positive prime at lowest temperatures. Cover rust-proofed and finished in Lincoln red. Bucket not included.

Model 989



### Air-operated double-acting pumps for 35 lb. (16 kg) drums

| Model | Bare pump | Drum cover | Base | Follower                   | Drum size |          |
|-------|-----------|------------|------|----------------------------|-----------|----------|
|       |           |            |      |                            | lb.       | kg       |
| 987   | 83513     | 90656      | –    | Not supplied <sup>1)</sup> | 25 to 50  | 11 to 23 |
| 989*  | 82716     | 91499      | –    | 84775                      | 25 to 50  | 11 to 23 |

<sup>1)</sup> Optional follower plate model 384775 can be used with original 25 to 50 lb. (11 to 23 kg) refinery grease bucket inside model 987 canister.  
Delivery kits for all units include: model 75084 high-pressure hose, model 11659 nipple, model 740 control valve, model 815 air coupler, model 82399 straight swivel and model 81387 universal swivel.  
**Note:** Free delivery 80 cu. in./min. (1 311 cm<sup>3</sup>/min.)  
**\*⚠WARNING** California Proposition 65: Cancer and reproductive harm. [www.P65Warnings.ca.gov](http://www.P65Warnings.ca.gov)

Model 84775



## Follower plates

### Model 84775

Deluxe universal follower for use with 25 to 50 lb. (11 to 22 kg) containers for 1, 1 1/4, 1 1/2 in. (25, 32, 38 mm) diameter pump tubes. All rubber unit ensures complete grease dispensing to the bottom of dented or plastic lined drums; wipes pail or drum clean. Metal cap holds insert firmly in place, ensuring seal and maintaining vacuum.

### Model 84780

Same as model 84775 except for use with 120 lb. (54 kg) containers for 1, 1 1/4, 2 in. (25, 32, 51 mm) diameter pump tubes. Used with series 20 and 40 air-operated grease pumps.

## Accessories

### Model 66060 2 1/2 in. (63.5 mm) caster for roll-a-round base units

Standard equipment on Lincoln drum and band dollies.

### Model 84941

Eye bolt kit for all series 20, 25 and 40 pumps, makes drum changing easy. Two part model 84941 kit screws directly onto pump for lifting with pump elevator.

### Model 5841 drum plug wrench

Simplifies the opening and closing of caps and plugs on fluid drums, eliminating the need for cumbersome makeshift tools, such as screwdrivers and hammers. Suitable for agriculture, construction, industrial, fleet maintenance and vehicle service applications. Compatible with standard metal and plastic caps or plugs on 16- and 55-gallon (60 and 208 l) drums.

- Non-sparking, non-corrosive aluminum construction
- Practical, hard-wearing tool
- Comfortable, textured grip for ease of use
- Fits most steel and plastic caps, including 3/4-inch vent plugs

## Follower plates

Recommended when pumping lubricants that will not seek their own level.

### Model 84775

Deluxe universal follower for use with 25 to 50 lb. (11 to 22 kg) containers for 1, 1 1/4, and 1 1/2 in. diameter pump tubes. All rubber unit ensures complete grease dispensing to the bottom of dented or plastic lined drums; wipes pail or drum clean. Metal cap holds insert firmly in place, ensuring seal and maintaining vacuum.

### Model 84780

For use with 120 lb. (54 kg) containers for 1, 1 1/4, 1 3/8, 1 1/2 and 2 1/8 in. diameter pump tubes. Used with series 20 and 40 air-operated grease pumps.

### Model 4417 for 120 lb. (54 kg) drums (drum not included)

Includes 40:1 value series pump, drum cover, high-pressure control valve, universal swivel, coupler, 7 ft. (2.1 m) connecting hose, follower plate and band dolly.

### Model 4459 for 25 to 50 lb. (11 to 22 kg) pail (pail not included)

Includes 40:1 value series pump, pail cover, handle, high-pressure control valve, universal swivel, coupler, 7 ft. (2.1 m) connecting hose, follower plate and band dolly.

### Model 4489 for 25 to 50 lb. (11 to 22 kg) pail (pail not included)

Same as model 4459 except without band dolly.

Model 66060



Model 84941



Model 5841



Model 84775



Model 4417



Shown with drum (drum not included)

Model 4459



Shown with pail (pail not included)