



OPERATING MANUAL

MODELS UG5000W, UG5000EW, UG5000EWFS SOLVENT AND WATERBORNE SPRAY GUN CLEANERS



**CAUTION
RIGHT TANK
FOR WATER BORNE PAINTS ONLY
NOT DESIGNED
FOR USE WITH SOLVENT BASED PAINT**

Conforms to Article 13(1)b ii, Council Directive 2014/34/EU



EX9A 18 02 78342
002


CORPORATION

WWW.UNIRAM.COM

- 381 Bentley Street, Markham ON L3R 9T2
- Tel. 1-800-417-9133
- sales@uniram.com

Revised 2020-09

CONTENTS

INTRODUCTION 3

FEATURES 3

SETUP

INSPECTION 3

INCLUDED PARTS 3

STRUCTURE 4

LOCATION 6

LEVELING, VENT AND AIR SUPPLY 6

SOLVENT SELECTION 6

PAIL SETUP - SOLVENT SIDE 7

INSTALL WASH GUN AND WHIP LINE COUPLER 7

PAIL SETUP - WATER SIDE 7

CLEANING OPERATION

RIGHT TANK WATER

 PRE-CLEAN 8

 CLEAN SPRAY GUNS 8

 WATER RECLAIM 10

LEFT TANK, SOLVENT 11

 PRE-CLEAN 11

 PLACING SPRAY GUNS AND CUPS IN WASH TANK 12

CLEANING CYCLE 14

 USING THE FLOW-THROUGH BRUSH 14

 MAINTENANCE 15

TROUBLESHOOTING CHART 17

TROUBLESHOOTING PROCEDURES 19

FLOW DIAGRAM 20

REPLACEMENT PARTS 26

WARRANTY 28

INTRODUCTION

Uni-ram holds many patents on designs used in its innovative products. Every machine is tested for compliance with Quality Assurance standards. Follow the directions in this manual under Setup, Operation and Maintenance in order to operate this machine safely and effectively. Not following these instruction can lead to malfunction or damage to the machine. Follow directions under the section below, Cautions and Warnings and on labels attached to the machine. Ensure that the manual is readily available for the operator at all times. If you have any questions about the operation of this machine, call your distributor.

CE Declaration of Conformity

Conforms to Article 13(1)b ii, Council Directive 2014/34/EU



EX9A 18 02 78342
002

CAUTIONS AND WARNINGS

- Always disconnect this machine from power sources before performing maintenance
- **Do not smoke or use near open flames, sparks or heat.**
- **Make sure unit is grounded properly.**

FEATURES

This unit combines a Spray Gun Cleaner for solvent-based paints on one side (left) and a Spray Gun Cleaner for water borne paints on the other (right) side.

The left (solvent) side has automatic wash, air flush, solvent rinse, fume venting with on/off control, manual wash with Flow-through Brush, manual rinse with a spigot and a stainless steel tank and lid. Two spray guns can be cleaned at the same time. The right, water, side is used to manually clean and rinse one spray gun at a time in a stainless steel tank. The used water can be reclaimed.

The unit comes with 2 closed-top high density plastic pail for washing and rinsing, already installed on the left side and an open-top plastic pail with filters on the right side, also installed.

MODEL	UG5000W	UG5000EW	UG5000EWFS
MANUAL RINSE WITH SPIGOT			YES
COMBO READY		YES	YES
SHIPPING SIZE (WDH)	47 X 17 X 46 inches 119 X 43 X 117 cm		
SHIPPING WEIGHT (LB / KG)	170 / 77	170 / 77	

SETUP

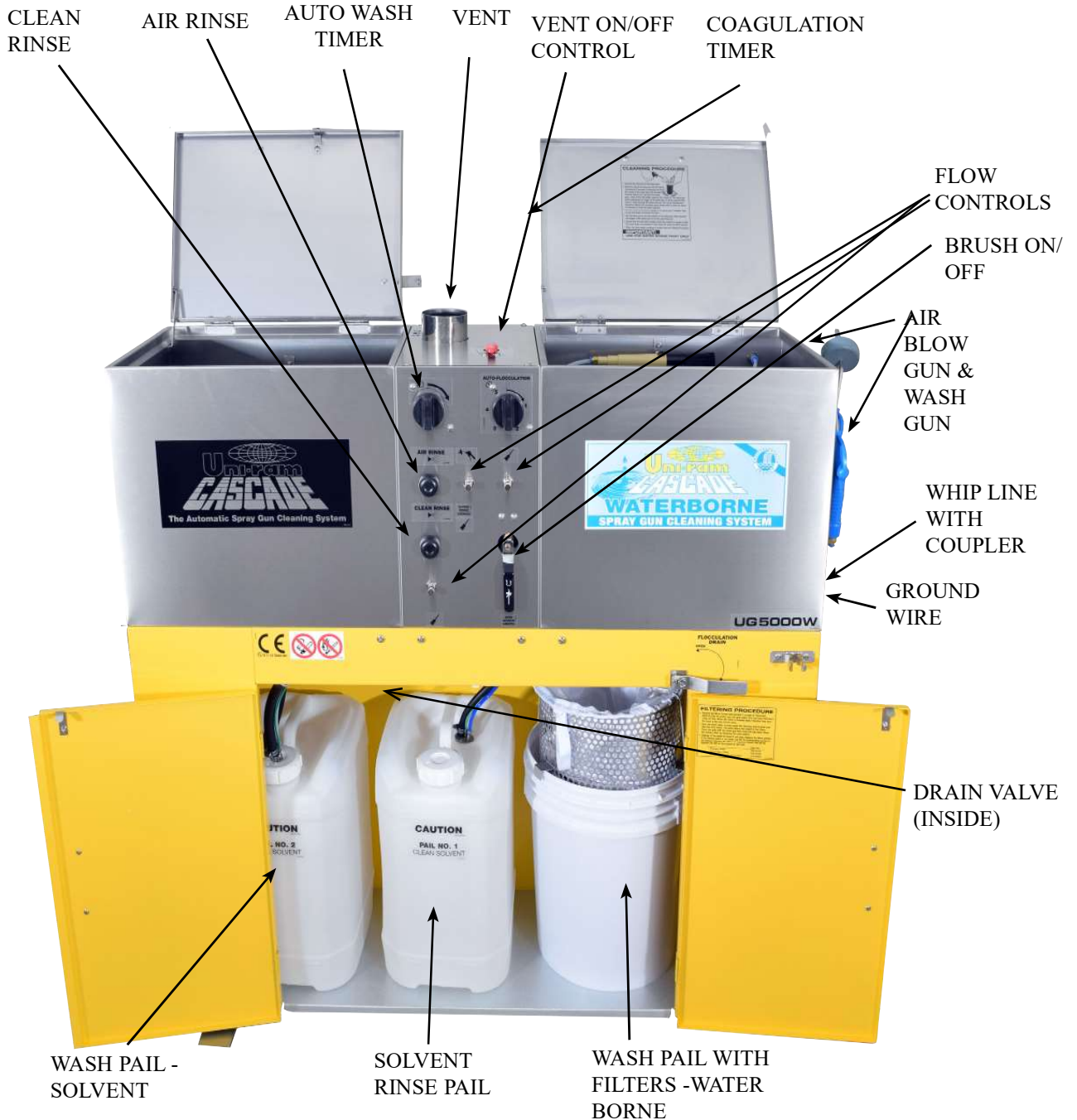
INSPECTION

- Report any transport damage immediately to the carrier and your vendor. Initiate a freight claim with the carrier.

INCLUDED PARTS (see Replacement Parts section for part numbers)

- Manual
- Spray Containment Chamber
- COAG-KLEEN FP, flocculant powder and AQUA-KLEEN cleaning concentrate
- Air Blow Gun
- Wash Gun
- Whip Line and Coupler

UG5000W SHOWN
UG5000EW AND UG5000EWFs
SEE NOTE BELOW.



NOTE:
SOLVENT PAILS WITH THE OVERFLOW TUBE AND RISER ARE NEEDED FOR USE WITH A SOLVENT RECYCLER (SEE NEXT PAGE). THE PAIL SET FOR THE UG5000W (SHOWN ABOVE) DOES NOT REQUIRE THE OVERFLOW TUBE AND RISER.

PAIL SETUP - UG5000EW AND UG5000EWFS

FOR USE WITH A UNI-RAM SOLVENT RECYCLER



1 2 3 4 5 6 7 8 9 10 11 12 13

ITEM	DESCRIPTION	ITEM	DESCRIPTION
1	GROUND WIRE	8	OVERFLOW TUBE
2	TRANSFER OUT HOSE TO RECYCLER	9	RINSE PUMP
3	DRAIN HOSE	10	AIR SUPPLY FOR RINSE PUMP
4	SUCTION TUBE FOR FLOW-THROUGH BRUSH	11	GROUND WIRE
5	SUCTION TUPE FOR AUTO WASH	12	CLEAN PAIL
6	WASH PAIL	13	TRANSFER IN HOSE FROM RECYCLER
7	DRAIN VALVE (HORIZONTAL=CLOSED)		

PAIL SETUP - UG5000EW and UG5000EWFS

- Combo Ready units come with the pails already installed as shown. Transfer Hoses are provided with Uni-ram Solvent Recyclers designed for Combo operation.
- Fill the Wash Pail with about 3 Gal (12 L) of clean solvent.
- Fill the Rinse Pail with about 5 Gal (19 L) of clean solvent (about 1" below the overflow pipe).
- After setting up the pails, make sure the Drain Valve is open (handle is in the vertical position).

If any item is missing, contact your supplier. Position in a well-ventilated area away from sparks, heat and open flames.

LOCATION

GROUND WIRES

Connect the green ground wire (right side of cabinet) to a grounded object in the facility using the ring terminal.

Ring Terminal



Note: The pump and metal tube that inserts into each pail are bonded.

DOOR HANDLES

The cabinet has 4 doors. The 4 door handles are located on the inside of each door for shipping purposes. Re-locate the door handles to the outside of the doors.

LEVELING

- Level the machine using the adjustable legs.
- Remove the cover on the "Air Input" (right side of machine) and attach an air supply adapter (not supplied).

AIR SUPPLY

- Connect a male air fitting (not supplied) into the female Air Inlet on the unit located on right side. The male air supply adapter is 1/4" NPT.
- Connect the female air supply hose to the male air fitting. The air supply hose must be at least 3/8" inside diameter. The air supply pressure must be at least 85 PSI.

The supply air must be free from contaminants such as water, dust, rust, tar and grease. If the air supply is not clean and dry install a moisture filter (not provided). The operation and longevity of the pumps and other components depends on clean dry supply air.

- To prevent damage to the Diaphragm Pump an internal Air Pressure Regulator has been installed to limit the air pressure to 85 PSI. Do not install a second air pressure regulator or use a pressure set below 85 PSI.

SOLVENT SELECTION

The adhesion quality of automotive paint has dramatically improved in recent years. The choice of solvent is critical. Only use quality compliant solvent that is formulated for your paint and intended for use with automatic spray guns cleaners. **DO NOT USE CHLORINATED SOLVENT.**

PAIL SETUP

There are 3 pails to fill, 2 with solvent and 1 with tap water on the right. Open the drain valve which controls the flow of solvent to the wash pail. See the photo, The Structure Figure 1 on page 4 and the photos below.



DRAIN VALVE - OPEN POSITION
(HANDLE IN VERTICAL POSITION).



DRAIN VALVE I- CLOSED
(HANDLE IN HORIZONTAL POSITION).

- Nozzle Extension, one installed (left tank); 2 push on nozzle extensions to accomodate different types of spray guns.
 - Trigger Clamp and Plug Kit - 2 Pieces
- If any item is missing, contact your supplier.

The filling of each pail is described in turn.

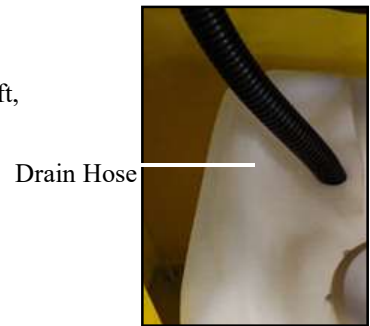
Use protective gloves, eyewear and respirator when filling pails.

PAIL SETUP - SOLVENT RINSE PAIL

Method - To fill the clean solvent pail move the clean pail, second pail from the left, outside of cabinet.

The procedure follows.

- Open the door to the base cabinet and lift the second pail from left outside of the cabinet.
- Fill the pail with solvent to the over flow pipe.



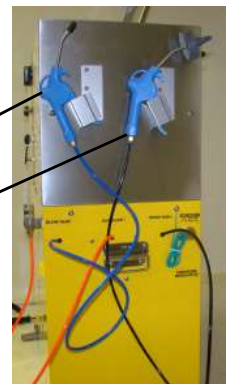
PAIL SETUP - SOLVENT WASH PAIL

- Ensure drain hose is in the wash solvent pail, see photo on right.
- Open drain valve (vertical position) and pour 16 L of solvent into the wash tank to drain to the wash pail through the drain hose.

INSTALL BLOW GUN, WASH GUN AND WHIP LINE COUPLER

Remove the Blow Gun, Wash Gun and Whip Line Coupler from the Accessory Kit bag (inside the tank) and install on the right side of unit by inserting the appropriate air tubes into the tools and hanging them on the brackets (Blow Gun and Wash Gun on the right side and Coupler on the front). Use the labels below the tubes as a guide. See photo on right.

Blow Gun
Wash Gun



PAIL SETUP and ADDITION OF UNI-RAM AQUA-KLEEN (RIGHT SIDE, WATER)

Aqua-Kleen is a state-of-the-art cleaning additive with an enhanced corrosion inhibitor for optimal protection of your expensive spray guns.

- Open the door to the base cabinet
- Move the Drain Valve handle to the "closed" (horizontal) position if it is not already there (under right tank.)

Aqua-Kleen
(102-8200)



Location of carton contain-
ing Aqua-Kleen

- Move the pail outside the unit. Remove the two filters. Pour a full bottle of Uni-ram Aqua Kleen into the pail and add tap water until the combined liquid level reaches the bottom of the filter holder. Replace filters.
- Insert the manual wash suction tube into the pail between the Filter Holder and the wall of the pail. Move the pail into the cabinet.



CLEANING OPERATION

RIGHT TANK (WATER)

This tank is used to clean spray guns, cups and parts. There are two modes of operation - Manual Wash and Manual Rinse. **NOTE: WATERBORNE PAINT DRIES QUICKLY! TO MINIMIZE HARDENING OF THE PAINT, BEGIN CLEANING AS SOON AS POSSIBLE AFTER COMPLETION OF THE PAINT JOB.**

PRE-CLEAN

- Disconnect the spray gun from the air hose. Pour paint from the conventional cup (when present) into a 20 L waste pail (not supplied). With disposable cups, use a squirt bottle to pre-clean the paint channel.



CLEAN SPRAY GUNS

- Ensure the the Flocculation Drain Valve under the reservoir is in the closed position so that the used water accumulates in the reservoir under the Work Screen.
- Connect the whip line at the front of the unit to the air connection on the spray gun. **This prevents water from reaching the air channel of the spray gun and speeds cleaning.**



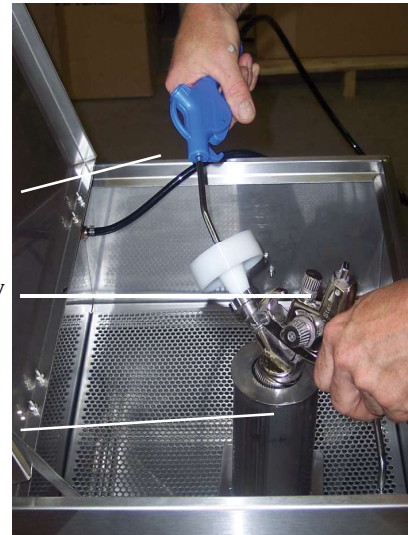
Air Fitting of
Spray Gun

Coupler of
Whip Line

CLEANING WITH THE WASH GUN

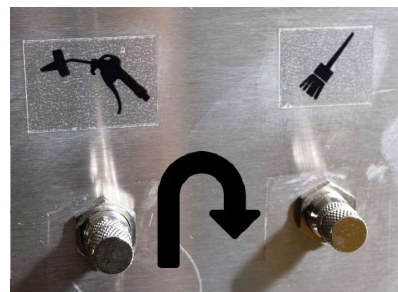
- To clean with the Wash Gun, make sure the Brush Control lever on the front of the unit is in the "Close" position (horizontal). Place the Spray Containment Chamber on the Work Screen in the wash tank. Place the nozzle of the Wash Gun into the paint channel (where the cup joins the spray gun) as shown in photo. Place the cap of the spray gun in the Containment Chamber.
- Step on the foot pedal and squeeze the trigger of the spray gun while squeezing the trigger of the Wash Gun to send a pressurized flow of water through the paint channel. Use the Wash Gun Flow Control on the side of the cabinet to adjust the flow as necessary. The Spray Containment Chamber contains the spray. Allow water to flow for about 20 seconds to clean the paint channel.

Wash Gun
Spray Gun
Spray Containment Chamber



TO ADJUST THE FLOW CONTROL

- Use the Flow Control to adjust the flow of water on the Water Gun and the Brush.
To increase the flow loosen the locking nut and rotate the dial anti-clock wise and then tighten the locking nut.



Flow Control Water Gun Flow Control Brush

CLEANING WITH THE BRUSH

- If necessary, use the Flow-through Brush to clean the outside of the spray gun. Make sure the Brush Control Lever on the front of the unit is in the "Open" position (vertical). Step on the foot pedal to send a pressurized flow of water through the Brush. To control the flow of water through the Brush, use the Brush Flow Control on the side of the cabinet as necessary.
- Use the blow gun to dry the inside and outside of the spray gun.
- To maximize the drying operation, dry the paint channel with the Blow Gun while squeezing the trigger of the spray gun. As a final check for dryness, remove the cap and check it for moisture.

NOTE: THOROUGH DRYING OF THE GUN BOTH INSIDE AND OUT WILL PREVENT CORROSION.

WATER RECLAIM

When no water remains in the water container under the cleaning tank it is time to reclaim the dirty water. There are 2 choices. Use a Uni-ram liquid recycler to recycle the dirty water or flocculate and filter the dirty water. The flocculation / filtering process is described next.

- Remove the Work Screen and the side rails. Sprinkle 2 full scoops* of the flocculant, COAG-KLEEN, evenly over the dirty water. The COAG-KLEEN Flocculant is included with your spray gun cleaner. Close the lid and turn the Flocculation Timer fully. When the Timer is finished wait 2 minutes and turn the timer a second time to the one minute mark.
- Open the Flocculation Drain Valve, using the Control on the front of the unit to drain and filter the dirty water. **Note: As the flocculation proceeds, the water should become clear.** The debris consisting of paint absorbed into the flocculant will collect in the filters. Clean the tank with the wash gun, wipe off the screen and rails, reinsert them and then close the drain valve. Ensure that the Air Agitator in the bottom of the tank lies flat.
- Remove the two filters containing the debris and set aside for about 20 minutes to dry. When the debris is dry, it should have an "oatmeal like" consistency. The debris should be disposed of according to local environmental regulations.
- If the filtered water is not clean, see the Troubleshooting section.
- The reclaimed water can be reused until it becomes "silky" to the touch and then it should be disposed of according to local environmental regulations. When adding fresh water, refill until the water reaches the bottom of the filter holder.
- Reuse the filters and replace as required.

* Each scoop = 1 fl oz or 34g of flocculant; 2 kg = about 50-58 scoops.



Co-Ag Flocculant



Co-Ag Flocculant Granules



Flocculant Timer



Flocculant Drain Valve

CLEANING OPERATION

CLEANING SOLVENTBORNE SPRAY GUNS IN LEFT SOLVENT TANK

PRE-CLEAN

- Disconnect the spray gun from the air line.
- Remove disposable cup from the spray guns as shown below in photo on right. Please be advised that in some jurisdictions the cup must be dried before disposal.
- Squirt solvent into the disposable cup adapter, shown in photo on far right.
- Pull the trigger and allow waste solvent to drain into a waste container (not supplied).
- Do not mix water and solvent waste.



SELECT NOZZLE EXTENSION

- The installed nozzle extension in the tank, part 780-3530, photo below, is for a disposable cup system, not for use with a conventional cup system.
- The chart and photos below describe the use for the push on nozzle extensions.
- Place the nozzle extension on the nozzle in the cleaning tank as shown in the photo, Wash Tank, on the next page.

	780-3530		110-430PPS	110-430
Type of Spray Gun	Most Disposable Cup Systems with larger openings.		Same nozzle as 780-3530 for use with disposable cup systems and conventional cup systems with a large opening.	Conventional Cup System with Narrow Opening.
Mount	Fixed in tank		Push-on	Push-on
Length (")	2.5		7.5	8.0
Included in Spray Gun Cleaner	Yes		Yes	Yes

780-3530 110-430PPS 110-430



INSTALLING SPRAY GUNS INTO WASH TANK

- Loosen the air cap of the spray gun 2 turns.
- To lock the trigger in the open position:
- Use the Trigger Lock Spring as shown in photo. See photo below.



Remove Gauge



Trigger Lock Spring



Trigger Lock Spring On Spray Gun

To prevent solvent from entering the air passage way of your spray gun select one of the following methods suitable for your gun:

- Attach the knurled nut that is attached to the trigger clamp chain or insert the white plastic plug into the air inlet of the spray gun as shown in the photo.



Air Plug inserted into the Air Passage way of the spray gun

- Place the spray gun on a nozzle extension in the wash tank with the air cap facing the corner. See photo below and on the next page.



Placing Spray Gun on Nozzle Extension

WASH TANK



Brush

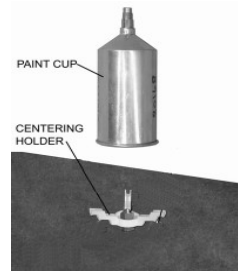
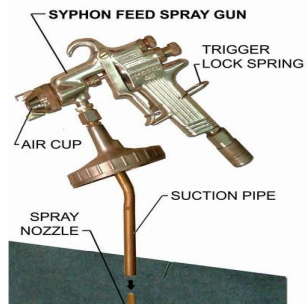
Cap points towards corner

Place white plug on the air fitting

Place Nozzle extension on this nozzle

Place Conventional Cup on the 3 prong fixture

DIFFERENT TYPES OF SPRAY GUNS



NOTE: THE PICTURES APPLY ONLY TO THE SOLVENT SIDE (LEFT TANK).

CLEANING CYCLE

- Close the lid of the spray tank and turn the "Auto Wash Timer" clockwise to start cleaning as in photo below. The wash cycle takes about 60 seconds. Solvent flows from the wash pail.
- Push and hold the "Air Rinse" button for about 2 seconds to evacuate the wash solvent. See photo below.
- Press and hold the "Clean Rinse" button for about 2 seconds to send 100 cc of clean solvent through the jets to rinse the spray guns, see the photo below. Clean-rinse is limited to 100 cc to minimize clean solvent consumption. Wait 30 seconds for the Rinse Pump to fully recharge before re-pressing the Clean Rinse button. Push and hold the "Air Rinse Control" button for about 2 second to air-rinse the guns.
- After cleaning the spray guns, remove the guns and cups from the tank and wipe them dry. Do not store spray guns and cups in the wash tank.

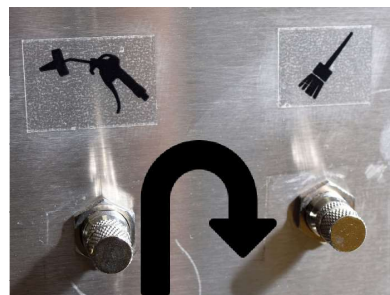


USING THE FLOW-THROUGH BRUSH

- To deliver wash solvent through the Brush for washing, (see left photo below) step on the foot pedal.
- Solvent flow is set at the factory but may be adjusted using the "Brush Flow Control". See the photo below.
- To increase flow, loosen the locking nut, rotate the dial anti-clock wise, then tighten locking nut.



Flow through brush

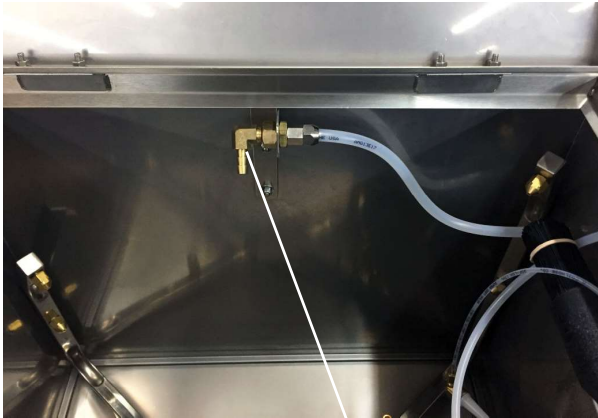


Flow Control Water Gun Flow Control Brush

USING CLEAN SPIGOT

UG5000EWFS

The spigot is a unique feature of the UG5000EWFS. Step on the Manual Rinse Foot pedal to activate the clean solvent flow through the spigot to rinse the spray guns. See photos below.



CLEAN SPIGOT



CLEAN SPIGOT

WASH BRUSH

MAINTENANCE

LEFT TANK (SOLVENT)

- A removable filter screen is installed at the end of the suction pipe, inside the left hand solvent wash pail. See A photo bellow.
- Once each month, remove the pail from the cabinet, then remove the suction pipe as in B photo below and clean the metal filter in a mixing cup of clean solvent. See photo C below.



A, Solvent Side Wash Pail



B, Metal Screen Filter



C, Metal Screen Filter to Clean

REPLACING SOLVENT IN PAILS (FOR LEFT SOLVENT TANK)

Replace the solvent when the solvent in the solvent wash tank has lost cleaning effectiveness or after approximately 100 cleanings.

- Remove the Rinse Pump from the clean solvent rinse pail and move this pail out of the cabinet.
- Close the drain valve, (horizontal position) as in the photo A below. Remove the drain hose, and suction pipe from the wash pail. See photo B and C.
- Remove the solvent wash pail from the cabinet. Pour the wash solvent into the waste drum.

See PAIL SET UP under SET UP for procedure to fill pails. Fill solvent wash pail with 16 L



Drain Valve



Suction Tube and Filter

Hole for Drain hose

Wash Pail

TROUBLESHOOTING CHART

of fresh solvent. Top up clean solvent pail to 19 L. Insert the Rinse Pump into the full clean solvent pail. Return hoses to the Wash Pail and return both pails to the cabinet.

PROBLEM	REASON	CORRECTIVE ACTION
WASH PUMP MAKES PUMPING SOUND BUT LIQUID DOES NOT FLOW FROM THE JETS	Drain valve closed	Open drain valve (put in vertical position), if not already open
	Liquid level too low	Check wash liquid level. Add liquid if less than 1/2 full.
		Fill to 4 gal (11 L).
	Debris in pump or suction and output hose	Follow Procedure 1, "Blocked Fluid Passage in Diaphragm pump" in the next section.
WASH PUMP MAKES HISSING SOUND AND LIQUID DOES NOT FLOW	Water or contaminants are in air line of pump.	Passage in Diaphragm Pump" in the next section.
	Flow Control is closed.	Manual flow control is located on the control panel on the front of the machine. Loosen the locking nut and rotate control to the left to increase flow.
	Liquid level too low	Check wash liquid level. Add liquid if less than 1/2 full up to 4 gal (11 L).
	Brush is clogged with debris.	Unthread brush from hose and operate foot pedal. If free solvent flow is now seen, replace brush with PN 144-390S
BRUSH PUMP DOES NOT MAKE A NOISE AND LIQUID DOES NOT FLOW WITH PEDAL DEPRESSED	Foot pedal switch not functioning	Inspect foot switch for free travel, and lubricate with gun oil. If switch will not travel freely, replace with PN 155-400BF2
	Water in air line causes pump to stall	Follow Procedure 2. "Blocked Air Passage in Diaphragm Pump" in the next section.
WASH PUMP DOES NOT STOP UNLESS TIMER IS TURNED BY HAND OR AIR IS SHUT OFF. WASH PUMP DOES NOT START.	Defective Timer	Replace Timer, PN 115-200K.
TIMER KNOB SPINS BACK WHEN TURNED	Defective Timer	Replace Timer. PN 115-200K.

Trouble shooting continued		
SYMPTOM	REASON	CORRECTIVE ACTION
INSIDE WALL OF TANK IS COATED WITH PAINT EVEN THOUGH OPERATOR MAINTAINS TANK	Liquid lacks cleaning strength	Replace solvent / water and AQUA-KLEEN in pail. Consider a solvent that is formulated for type of paint used and for use with automatic spray gun cleaning.
GUNS NOT CLEAN, PUMP WORKING, SOLVENT FLOW NORMAL	Trigger not locked in open position	Use Trigger Lock Spring PN 120-350
	Spray gun is not properly installed on to nozzle	Re-install with proper adapter
	Incompatible solvent	solvent formulated for type of paint
	Low pressure in air supply	of 85 PSI
	Plugged jets	through the jets. If not successful,
SOLVENT APPEARS RED or ORANGE	Water in solvent is corroding metal pail	Replace or recycle wash solvent
GUNS NOT CLEAN, WASH SOLVENT IS MILKY WHITE	Wash solvent is contaminated with water	Replace or recycle wash solvent
CLEAN RINSE DOES NOT WORK	Not enough liquid in clean rinse pail (right side)	Add liquid
	Rinse Pump is leaking from a crack caused by corrosion due to acidic or chlorine contaminated solvent	Replace rinse pump, PN URP-100SF
CLEAN RINSE IS DIRTY	Faulty Valve	Replace Combination Valve, PN UVB-400KIT

(4" UDP4TA Pump shown but procedures are the same for the 2" UDP2TAB Pump)

PROCEDURE 1

Blocked Fluid Passage In Diaphragm Pump

If the pump sounds like it is working but liquid does not flow, clear the fluid passage as follows:

- Remove suction tube from the pail and blow air at 85 PSI into the INLET Sovent Hose (see diagram). Step on foot pedal. This procedure may have to be repeated several times. If this procedure does not help, blow some water into the suction hose using a spray gun, wait one minute and step on foot pedal. This procedure may have to be repeated several times. If this procedure does not work, the pump must be replaced.

If you need to replace the pump log-on to Service Channel and Fixxbook or call the Uni-ram Service Engineer. The warranty on the diaphragm pump is two years from date of purchase.

This procedure will also clear a blockage in the fluid line for the wash gun.



PROCEDURE 2

Blocked Air Passage In Diaphragm Pump

If there is a steady hissing sound and the pump is not cycling, the spool valve has stalled due to a blocked air passage. Follow the procedure below to clear the blockage.

- Connect a blow gun to an 85 PSI source. Locate the blue hose that extends from the air exhaust port of the diaphragm pump. Use a blow gun to blow air into the open end of this hose. Turn timer. If the procedure is successful, the pump will start working. The procedure may have to be repeated several times. If this procedure does not work, replace the pump.
- Cause: Contaminants in the air supply (water, oil, solid particles etc)
- Preventative Action: If necessary, install an Airline (Moisture) Filter.



PROCEDURE 3

Blocked Passage in Air Line

The components in the air line are the diaphragm pump, air valve, foot pedal, 3-way ball valve and regulator. See the Flow Diagram and the section: Replacement Parts.

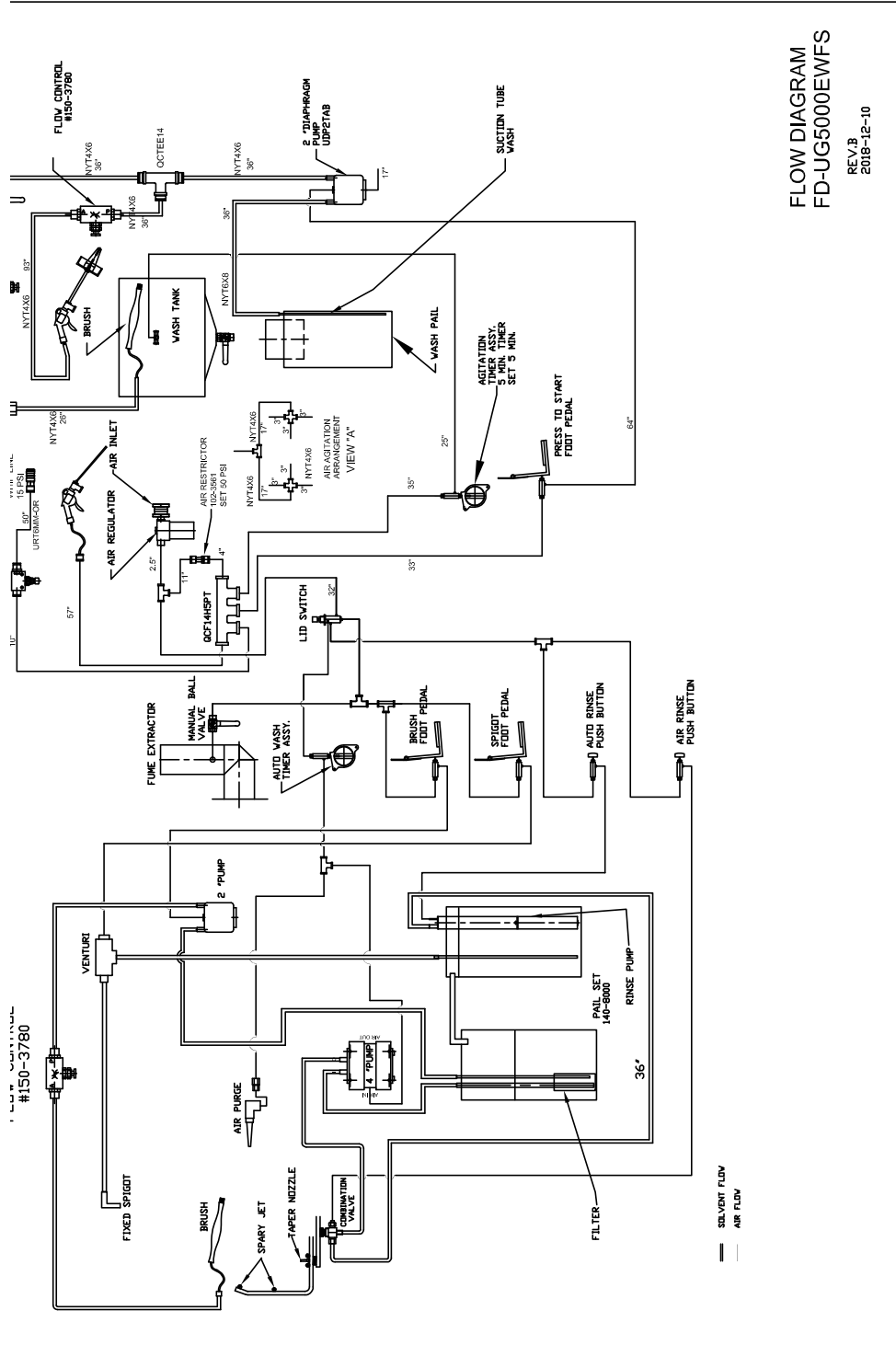
To troubleshoot a component:

- 1) Disconnect the air line to the component using the quick disconnect.
- 2) Step on foot pedal and check for presence of positive air pressure in the air line. If there is ample positive air pressure, replace the component.

If air pressure is absent, there is a faulty component upstream. Reconnect the air line and check the operation of the next component upstream by following steps 1 and 2 above.

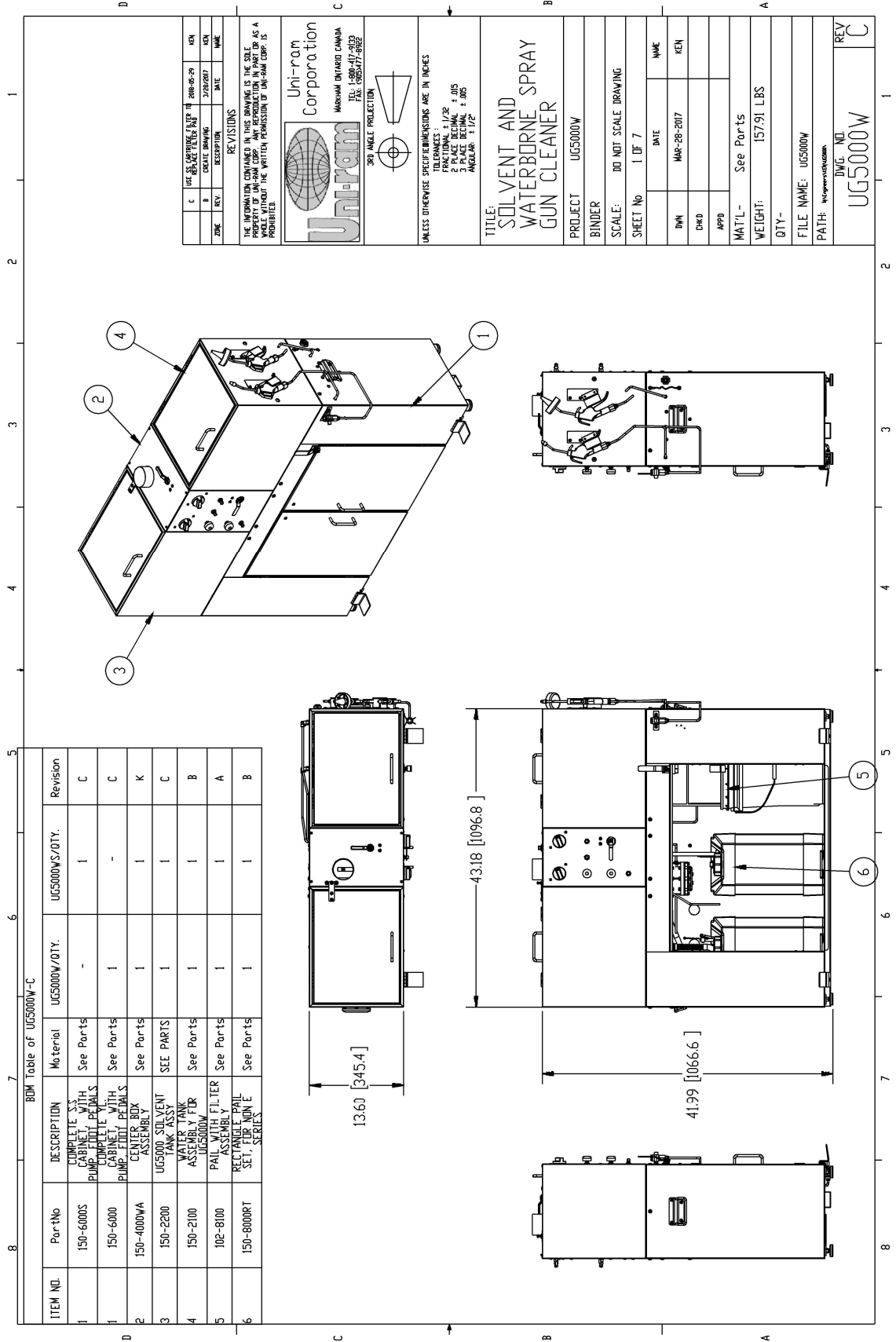
FLOW DIAGRAM FOR UG5000EWFS

Shows the flow of solvent and compressed air.

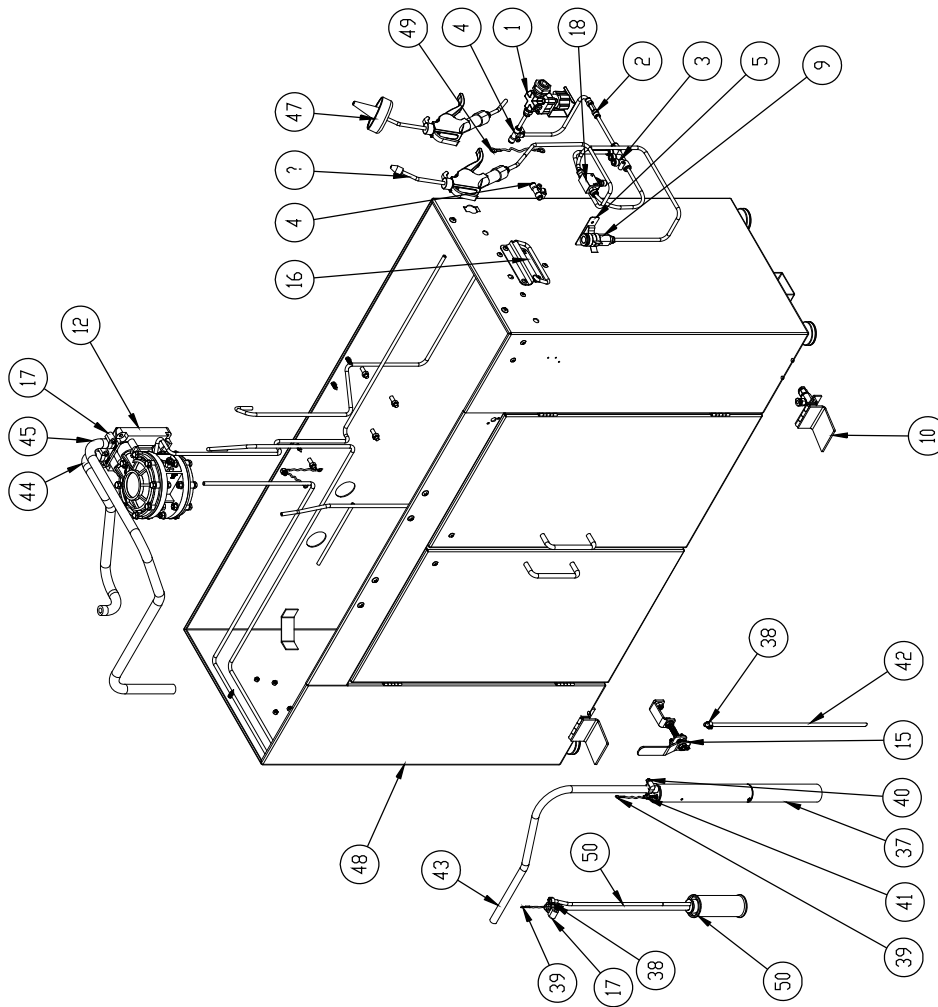


FLOW DIAGRAM
FD-UG5000EWFS

REV. B
2018-12-10



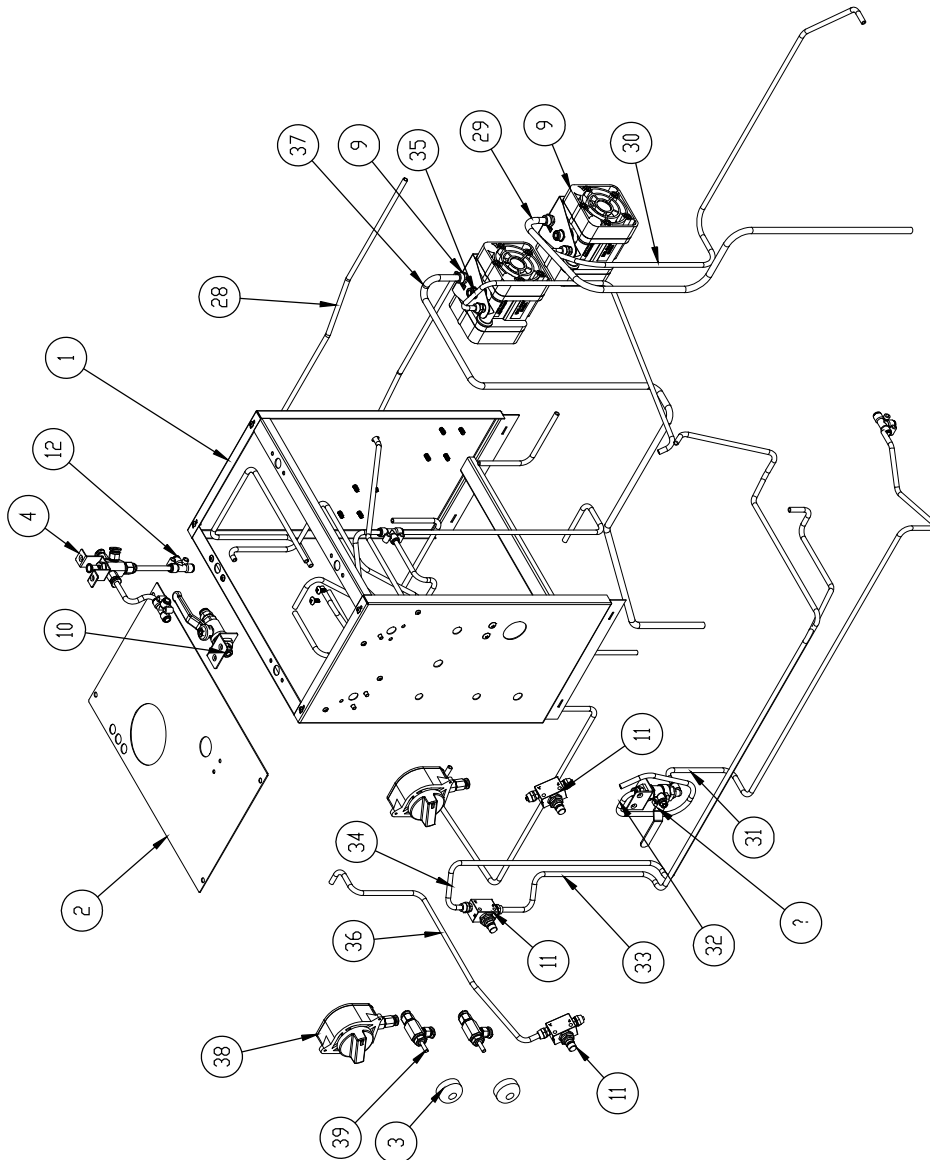
ITEM NO.	PartNo	DESCRIPTION	150-6000/QT Y.
1	150-600	YELLOW PAINT CABINET WITH TOP AND LEGS, 1300MM AIR PRESSURE POT	1
2	120-020PR	AIR RESTRICTOR SUB-ASSY Push-to-Connect 1/4" ID TUBE, 3 PLYS	1
3	0CF14HSPT	UC FITTING 1/4" ID	2
4	0CTEE14	BRUSH HOLDER	1
5	102-3022F	QUICK COUPLER 1/4" BODY, WITH FOOT PEDAL, VALVE	2
9	102-3990	4" DIAPHRAGM PUMP	1
10	240-7510	4" DELRIN BODY TEFLON DISC.B/M INCL	1
12	UDP4TA	DRAIN VALVE, ADJUST HANDLE	1
15	150-6210	CLAMP ASSEMBLY FOR 1 1/2" ID. UPG TO 1600P	2
16	320-3253	HOSE THINER RESIST 1/4" ID X 1/2" LG	1
17	100-261	HOSE THINER RESIST 3/8" ID X 1/2" LG	1
18	102-3950A	AIR FLOW CONTROL ASSEMBLY 6MM TUBE	1
19	100-200S	SINGLE PULSE PUMP 9.5MM 36.1 G.GREEN	2
39	100-8335	GROUND WIRE ASSY 14GA, 36.1 G.GREEN	2
40	100-261S	HOSE THINER RESIST 1/4" ID X 1/2" LG	1
41	100-255	HOSE THINER RESIST 3/8" ID X 1/2" LG	1
42	102-835A	SUCTION PIPE 1/4" ODK 0035"	1
43	RBH4X12R	HOSE THINER RESIST 1/4" ID X 1/2" LG	1
44	RBH38X1116	HOSE THINER RESIST 3/8" ID X 1/2" LG	1
45	RBH38X1116	HOSE THINER RESIST 3/8" ID X 1/2" LG	1
46	102-7010	AIR BLOW GUN ASSY. WITH FITTING	1
47	102-7020	WASH GUN ASSY. WITH FITTING	1
48	150-600	PAINTED CABINET WITH FLOOR, TOP AND LEGS	1
49	100-835-6	GROUND WIRE ASSY 18GA, 1300MM.GREEN, BOTH ENDS WITH 1/4" NON-INSULATED TIN-PLATED COPPER RING TERMINAL	1
50	150-4200	INLET TUBE WITH FILTER SUB-ASSY 1	1



UNI-RAM CORPORATION
REV. MAY-2018

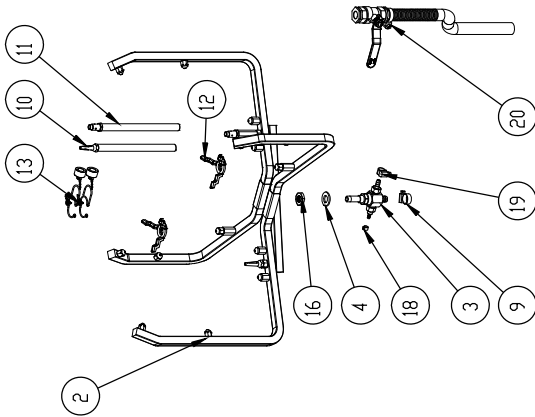
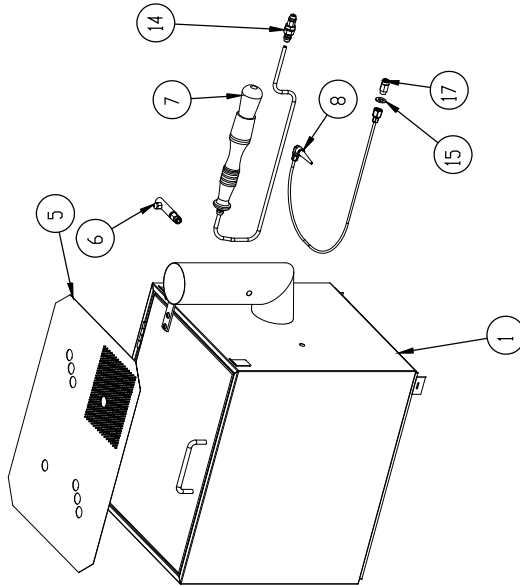
BOM Table of 150-4000WA

ITEM NO.	PartNo	DESCRIPTION	QTY.
1	150-410A	CENTER BOX WELDED FOR UG5000W	1
2	140-4112W	TOP COVER, FOR CENTER BOX	1
3	140-731F	PUSH BUTTON, RINSE	2
4	14-800V	LID SWITCH ASSY, 4-WAY, 3-OUT	1
5	14-800V	LID SWITCH ASSY, 4-WAY, 3-OUT	1
6	NYT4X6	SOFT NYLON TUBE, 6MM ID, 36" LG	12
7	NYT4X6	SOFT NYLON TUBE, 6MM ID, 36" LG	12
8	NYT4X6	SOFT NYLON TUBE, 6MM ID, 36" LG	12
9	UDP2TAB	2-PHASE PUMP WITH BALL BEARING, 8MM INLET AND 6MM OUTLET, WITH FILLINGS	2
10	780-4610	BALL VALVE ASSEMBLY, 1/4", WITH BRACKET	1
11	150-3780	L100D FLOW CONTROL ASSEMBLY, 6MM TUBE	3
12	OC1EE14	QC FITTING, 1/4" FOR 8MM OD HOSE	3
28	NYT4X6	SOFT NYLON TUBE, 6MM ID, 34" LG	1
29	NYT6X8	SUPER FOFT NYLON, 6MM ID X 8MM OD, 36" LG	1
30	NYT4X6	SOFT NYLON TUBE, 6MM ID, 36" LG	1
31	NYT4X6	SOFT NYLON TUBE, 6MM ID, 36" LG	1
32	NYT4X6	SOFT NYLON TUBE, 6MM ID, 14" LG	1
33	NYT4X6	SOFT NYLON TUBE, 6MM ID, 36" LG	1
34	NYT4X6	SOFT NYLON TUBE, 6MM ID, 93" LG	1
35	NYT4X6	SOFT NYLON TUBE, 6MM ID, 20" LG	1
36	NYT4X6	SOFT NYLON TUBE, 6MM ID, 29" LG	1
37	NYT6X8	SUPER FOFT NYLON, 6MM ID X 8MM OD, 40" LG	1
38	115-200K	MECH. MANUAL TIMER KIT, 5 MINS.	2
39	115-400	RINSE VALVE ASSY, 2-WAY, HEAVY DUTY, M10 THREAD	2

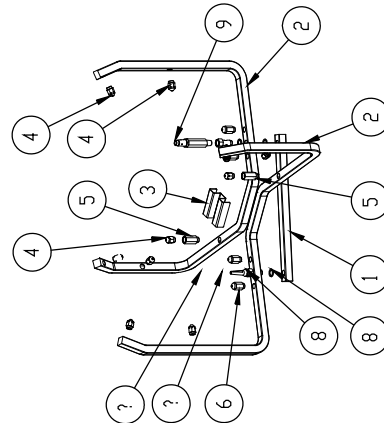


UNI-RAM CORPORATION
REV. MAY-2018

ITEM NO.	PartNo	DESCRIPTION	QTY.
1	140-300N	UG4000 TANK	1
2	140-360S	DELIVERY S.S. TUBE ASSY	1
3	150-400W	COMBINATION VALVE ASSY, FOR UG5000	1
4	110-465	NYLON WASHER 25.4*13.35	1
5	100-332N	FLAME RETARDING SCREEN	1
6	36-110J	AIR VENTURI AND SUPPORT	1
7	144-390S	MANUAL BRUSH WITH COMPRESS FITTING,6MM, FOR SOLVENT	1
8	140-230	AIR PURGE KIT, SPRAY GUN	1
9	110-261	HOSE CLAMP, #5, S.S.FOR 11/16"OD, 10mm. TO 16mm.	1
10	110-430	TAPER NOZZLE ADAPTER, ALM. TUBE, 6.5" LG	1
11	110-430PPS	NOZZLE ADAPTER FOR PPS, ALM. TUBE, 6.5" LG	1
12	100-413F	CUP HOLDER	2
13	140-2340	TWO SETS KIT-PLUG, INCL.TWO 140-2341	1
14	110-470	FITTING SUB-ASSY TO MANUAL BRUSH	1
15	780-4651	WASHER, ZD1910, 0.750"ODX0.390"IDX.062" T	1
16	100-463	BRASS NUT, UNION ADAPTOR, 1/4" NPS	1
17	0CF141BL	QUICK CONNECTOR, 1/4"OD TUBE X 1/8" NPT LONG	1
18	100-252	HOSE CLAMP 7mm I-FAR 9/32	1
19	100-261S	HOSE CLAMP #4 S.S.	1
20	140-460	DRAIN VALVE WITH FITTINGS AND HOSE SUB-ASSY	1



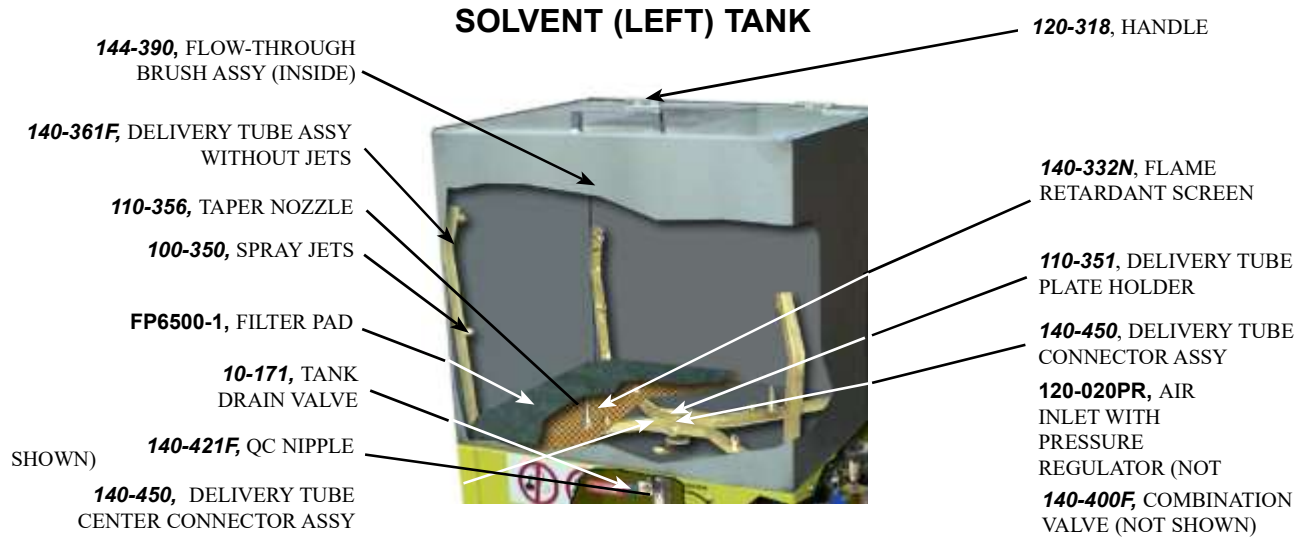
ITEM NO.	PartNo	DESCRIPTION	QTY.
1	140-371S	SS BLANCE TUBE	1
2	110-361S	SS DELIVERY TUBE	2
3	100-331S	SS CENTRE BRACKET FOR DELIVERY TUBE	1
4	100-331S	EXTENSION ASSEMBLY	1
5	100-331S	EXTENSION ASSEMBLY	1
6	100-331S	EXTENSION ASSEMBLY	1
7	100-331S	EXTENSION ASSEMBLY	1
8	99-612P	FLA WASHER PL	4
9	780-3530	NOZZLE, 0.405" ID X 0.350" OD X 0.451" L	4
10	110-353S	FITTING SET, INCLUDE: 100-457 & 110-356	1



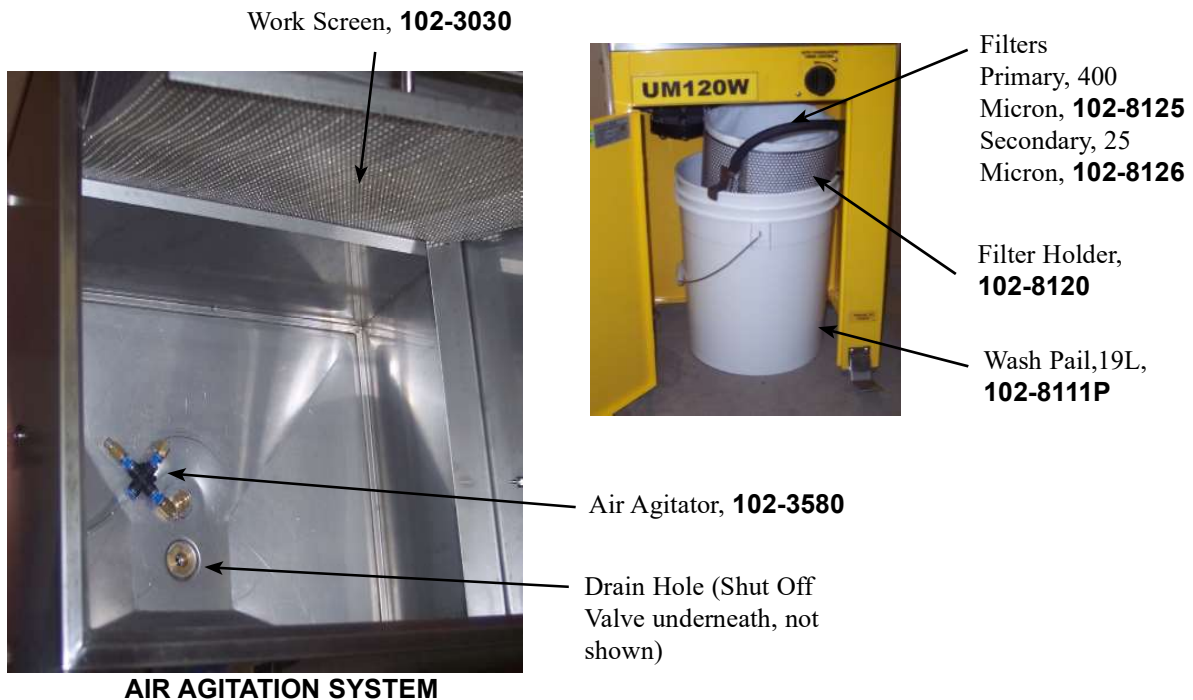
UNI-RAM CORPORATION
REV. MAY-2018

REPLACEMENT PARTS

DESCRIPTION	Part Number
FLOW-THROUGH BRUSH, SOLVENT	144-390
FLOW-THROUGH BRUSH, WATER	144-390W
2" DIAPHRAGM PUMP (WATERBORNE SIDE)	UDP2TAB
4" DIAPHRAGM PUMP (SOLVENT SIDE AND BRUSH)	UDP4TA
AIR BLOW GUN	102-7010
WASH GUN	102-7020
TIMER KIT	115-200/K
VALVES (PEDAL,RINSE ETC)	115-400BF
NOZZLE EXTENSION, CONVENTIONAL SYSTEMS ONLY	110-430
NOZZLE EXTENSION, ALL MODELS, PUSH ON	110-430PPS
NOZZLE EXTENSION, DISPOSABLE CUP SYSTEMS ONLY	780-3530
TRIGGER CLAMP & PLUG KIT	140-2340
AIR PASSAGE PLUG	140-230
LID SWITCH	115-350F
WASH PAIL	150-8111P
RINSE PAIL	150-8114P
LID FOR WASH OR RINSE PAIL	780-8113
PAIL, WATERBORNE (OPEN TOP)	102-8111P
GROUND WIRE	600-8901
WHIP LINE AND COUPLER	102-3980T
PAINT CAP HOLDER	100-413F
FILTER BAG, PRIMARY	102-8125
FILTER BAG, SECONDARY	102-8126
FILTER HOLDER	102-8120
AIRLINE MOISTURE FILTER	10-220
FILTER PAD, REGULAR, 13.75 X 17.5", PKG OF 10	FP6500-10
COAG KLEEN	102-8300
AQUA-KLEEN	102-8200



WATER (RIGHT) TANK





Full Product Warranty

These Uni-ram products have been engineered and manufactured to high performance standards. Each unit has been subjected to detailed factory testing before shipment.

This product comes with a one-year full warranty from the date of purchase. Uni-ram Corporation reserves the right to repair or replace the unit, free of charge, to the original purchaser if a part is found to be defective in material or workmanship as determined by factory service personnel. The items listed below under "Conditions of Warranty" as consumables are not covered.

Uni-ram reserves the right to direct the customer to ship the unit collect to the Uni-ram factory or to an approved Service Center for repair using the Uni-ram Return Goods Procedure or to repair the unit on-site. To prevent damage in transport, the purchaser must ship the unit in the original packaging or use alternate adequate packaging. All units must be **shipped clean and free of liquid**.

Diaphragm Pump:

We are pleased to advise that the warranty on the diaphragm pump, the heart of the spray gun cleaner, comes with a 2 year replacement warranty. If, in the unlikely event your diaphragm pump fails during the first two years of service, call Uni-ram Service at 1-800-417-9133. We will send you a new pump free of charge and arrange for the return of your original pump.

Conditions of Warranty:

As Uni-ram Corporation has no control over the working conditions or circumstances under which the purchaser stores, handles or uses the product, Uni-ram makes no warranty or claim, either expressed or implied with respect to this product's fitness for any purpose or the result to be obtained from its use. This condition applies to the sale of all products and no representative or distributor of Uni-ram Corporation has the authority to waive or change these conditions.

This warranty applies only to the original purchaser and does not apply if the unit has been misused, overloaded, neglected, altered or used for any purpose other than those specified in the operating and installation instructions. Deterioration due to normal wear is not covered by this warranty. Damage due to accident, transportation, fire, floods or acts of God is also not covered. Units whose serial numbers have been altered or removed are not covered. The warranty is invalid if unauthorized chemicals as noted in the manual or liquids with acid content are used in this unit. Unauthorized attempts at self-repair or alterations by the owner also invalidate this warranty. Interior or exterior finishes are not covered by this warranty.

Consumable Items are not covered by this warranty (eg: gaskets, screens, bags, filters, nozzles and air jets).

This warranty replaces all other warranties expressed or implied by statute or otherwise.

To make a claim, call Uni-ram Service at 1-800-417-9133 and quote the serial number of the unit.