

# SANDING BLOCKS

## SB-1 Soft Block



The original flexible sanding block features two different densities to achieve the ultimate in block sanding of curved or irregularly shaped surfaces.

Size: 2-5/8"x5-1/4"  
Application: Wet & Dry Sanding, Color Sanding

## WB-1 Wonder Block



A large, ergonomically designed block with a unique profile that offers maximum gripping power over flat to slightly curved surfaces.

Size: 2-1/2"x6-1/2"  
Application: Dry Sanding, Color Sanding, PSA Rolls or Sheets

## RK-1 Rocker Block



Wrap a 6" sanding disc around this block for any type of sanding. Features a unique radius edge for contour sanding. Rigid inner layer prevents transfer of finger marks.

Size: 2-3/4"x6"  
Application: Wet & Dry Sanding, Filler Sanding, Color Sanding, Contour Sanding

## RKH-1/RKL-1 Hook & Loop Rocker Blocks

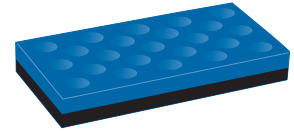


Rocker Block models designed for 6" hook (RKH-1) and Loop (RKL-1) faced abrasive discs. Designed to reduce consumable costs and make quick work of sanding contours.

This unique two-sided block features a blue side with holes which act like a grater for 30% faster cutting. Black side is for less aggressive blocking.

Size: 2-5/8"x5-1/4"  
Application: Fast Blocking, Filler Sanding, Dry Sanding

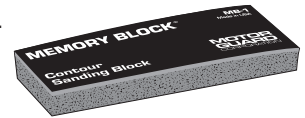
## HT-1 Holey Terror



A firm vinyl side offers extreme curving power for fender crowns and motorcycle tanks. Other side features soft yet dense memory foam to reduce pressure on nibs, louvers, etc.

Size: 2-5/8"x6-1/2"  
Application: Dry Sanding, Color Sanding

## MB-1 Memory Block



Utilizes a standard sheet folded into thirds. Unique radius sides lift the edges of the PSA sheet away from the work surface for smoother, more even sanding.

Size: 2-5/8"x5-3/8"  
Application: Wet Sanding, Fine Color Sanding, Contour Sanding

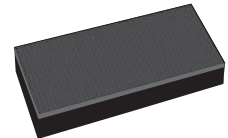
## RL-1 Roller Block



Soft and flexible for scuffing areas not accessible to rigid blocks. Designed to evenly distribute pressure, imparting an even tooth over the entire panel in a single pass.

Size: 4"x6"  
Application: Scuffing

## BBS-1 Soft Backer Block



## BIG BLOCKS

### BG6-1/BGK6-1 Standard Big Block



Power up hand sanding with these large, flexible blocks that feature multi-layered construction and radius edges to match contours.

Size: 2-5/8x6-1/2"  
Application: Dry Sanding, Filler Sanding, Blocking

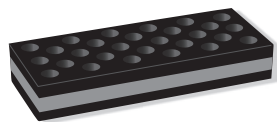
Maximum length Big Block for fast blocking over large areas. Unique multi-layered construction flexes to match curved panels.

Size: 2-5/8x12"  
Application: Dry Sanding, Filler Sanding, Blocking

### BG12-1/BGK12-1 Standard Big Block



### BGH6-1 Hole-Side Big Block



This one-of-a-kind Big Block features a hole side that acts like a grater for faster cutting. smooth side is for less aggressive blocking and radius edges match body contours.

Size: 2-5/8x6-1/2"  
Application: Fast Blocking, Filler Sanding, Dry Sanding

A soft-sided Big Block for fine color sanding over large areas. Rigid inner layer prevents the transfer of finger marks and radius edges match body contours.

Size: 2-5/8x6-1/2"  
Application: Wet & Dry Sanding, Color Sanding

### BGS6-1 Soft-Side Big Block



### BGR-1 Rigid Block



Create the ultimate blocking bar by wrapping an abrasive sheet around this narrow rigid block. Just the right width for power blocking in small areas, this block flexes slightly to follow contours.

Size: 1-1/2x11"  
Application: Blocking and Sanding Contours and Small Areas

An extra-rigid sanding block that flexes just enough to follow slightly curved surfaces. A comfort-fit block for high-production blocking and other demanding applications.

Size: 2-5/8x5-1/2"  
Application: Aggressive Blocking, Filler Sanding

### BGR6-1/BGRK6-1 Rigid Block



### BGR12-1/BGRK12-1 Rigid Block



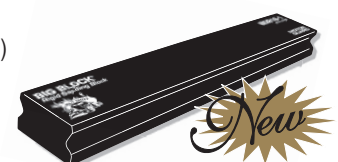
For aggressive two-handed blocking, this rigid sanding block is unequalled. Super flat face flexes just enough to follow slightly curved surfaces.

Size: 2-5/8x11"  
Application: Aggressive Blocking, Filler Sanding

Power block the largest panels with speed and power with our longest rigid sanding block. Users of this block report maximum material removal in minimal time.

Size: 2-5/8x16"  
Application: Aggressive Blocking, Filler Sanding

### BGR16-1/BGRK16-1 Rigid Block



## FLEXI-BLOCK™ FLEXIBLE SANDING BARS



## MINI-BLOCKS™ DETAIL SANDING BLOCKS

These new flexible sanding bars are for detail sanding applications. Constructed of a dense yet flexible compound that allows bending to suit body profiles while maintaining a firm and durable backing for highly effective sanding. Each bar measures 11 inches in length.

These new miniature sanding blocks are designed for fine detail sanding in tight spaces. Constructed of a specialty formulated compound, their ergonomic shapes allow for fine, fingertip sanding on a wide variety of profiles and body lines. Each bar measures 3-1/2 inches in length.



**AP-6**  
Flexi-Block Assortment

Flexi-Blocks™ are available in three styles, the Rectangular Flexi-Block (FB-1) for flat sanding and sharp corners, the Double D Flexi-Block (FB-2) with radiused sides for sanding inside contours, and the Curved Flexi-Block (FB-3) for complex body lines and details. The blocks are also offered in a see-through pegboard display of all three, the AP-6 Flexi-Block™ Assortment.



**AP-7**  
Mini-Block Assortment

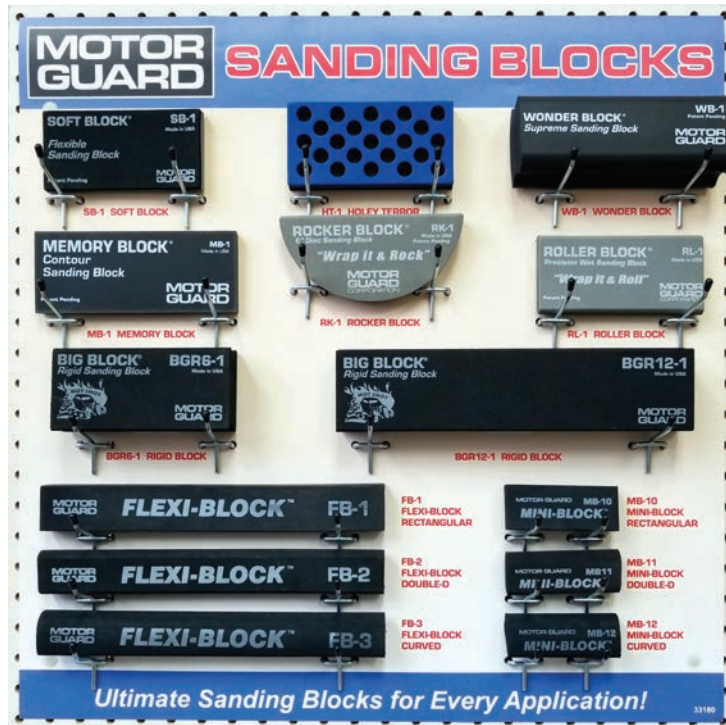
Mini-Blocks™ are available in three styles, the Rectangular Mini-Block (MB-10) for flat sanding and sharp corners, the Double D Mini-Block (MB-11) with radiused sides for sanding inside contours, and the Curved Mini-Block (MB-12) for complex body lines and details. The blocks are also offered in a see-through pegboard display of all three, the AP-7 Mini-Block™ Assortment.



**FB-1 - Rectangular Flexi-Block**  
**FB-2 - Double-D Flexi-Block**  
**FB-3 - Curved Flexi-Block**



**MB-10 - Rectangular Mini-Block**  
**MB-11 - Double-D Mini-Block**  
**MB-12 - Curved Mini-Block**



Ultimate Sanding Blocks for Every Application!

# MOTOR GUARD DP-5000

## In Store Display Board Special Jobber Cost

Includes one each of the below blocks  
24"x24" Graphic Sheet Pegboard,  
28 Hooks, Prepaid freight to Jobber

BGR6-1	00793	BIG-BLOCK SANDING BLOCK, RIGID, 5 1/2" LENGTH
BGR12-1	00794	BIG-BLOCK SANDING BLOCK, RIGID, 11" LENGTH
FB-1	00706	FLEXI-BLOCK SANDING BAR, RECTANGULAR SHAPE
FB-2	00707	FLEXI-BLOCK SANDING BAR, DOUBLE-D SHAPE
FB-3	00708	FLEXI-BLOCK SANDING BAR, CURVED SHAPE
HT-1	00751	HOLEY TERROR ULTIMATE BLOCK SANDING
MB-1	00742	MEMORY BLOCK - "MEMORY" SIDE, & PSA SIDE
MB-10	00826	MINI-BLOCK SANDING BLOCK, RECTANGULAR SHAPE
MB-11	00827	MINI-BLOCK SANDING BLOCK, DOUBLE-D SHAPE
MB-12	00828	MINI-BLOCK SANDING BLOCK, CURVED SHAPE
RK-1	00744	ROCKER-BLOCK 6" DISC SANDING BLOCK
RL-1	00754	ROLLER-BLOCK PRECISION WET SANDING BLOCK
SB-1	00746	SOFT BLOCK FLEXIBLE SANDING BLOCK
WB-1	00740	WONDER BLOCK SUPREME SANDING BLOCK