

209



209

### FILLER FAUCET

- Easy operation and smooth flow due to long flexible rubber spout with lever control
- Heavy duty, ruggedly built with stainless steel springs
- Operating pressure (standard municipal (city) water pressure): 30-35 PSI
- Nitrile rubber spout
- Spout length: 4"

Boxed Part No.	Bulk Part No.	Retail Part No.	Per Card	Product Specs		
				NPT (in)	Connection	Material
209	209BK	s-209	1	1/4"	Female	Zinc Alloy

### COUPLER & PLUG KITS

s-210



s-210

### 12-pc M-Style® Coupler/Plug Kit

- Air flow: 40 SCFM
- Max inlet pressure: 300 PSI

Part No.	s-210
Qty	Description
2	#715 Female Brass Couplers
8	#727 Male Steel Plugs
2	#728 Female Steel Plugs



s-211



s-211

### 5-pc M-Style® Coupler/Plug Kit

- Air flow: 40 SCFM
- Max inlet pressure: 300 PSI

Part No.	s-211
Qty	Description
1	#715 Female Brass Coupler
3	#727 Male Steel Plugs
1	#728 Female Steel Plug



s-212



s-212

### 7-pc M-Style® Coupler/Plug Kit

- Air flow: 40 SCFM
- Max inlet pressure: 300 PSI

Part No.	s-212
Qty	Description
1	#715 Female Brass Coupler
3	#727 Male Steel Plugs
3	#728 Female Steel Plugs



s-213



s-213

### 5-pc A-Style Coupler/Plug Kit

- Air flow: 40 SCFM
- Max inlet pressure: 300 PSI

Part No.	s-213
Qty	Description
1	#775 Female Brass Coupler
3	#777 Male Steel Plugs
1	#778 Female Steel Plug



BLO-GUNS  
100 SERIES

KITS & FAUCETS  
200/300 SERIES

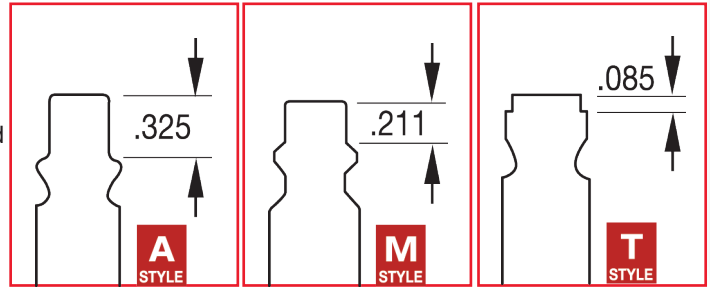
TIRE HARDWARE  
400/1400 SERIES

INFLATOR GAGES  
500 SERIES

FITTINGS & HOSES  
600/1600 SERIES

**A-M®-T STYLE 3 WAY COUPLERS**

- 1/4" basic flow size
- A-M®-T Style are push type with Drag Guard
- 3 ball bearing connection
- Heavy duty brass - rust resistant
- Accepts the 3 most popular 1/4" basic style plugs sold
  - Milton® or industrial style plugs (M-Style®)
  - Aro 210-style plugs (A-Style)
  - Tru-Flate/Parker automotive style plugs (T-Style)
- Air Flow: 42 SCFM



**745 • 746**

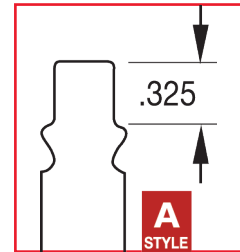


Boxed Part No.	Bulk Part No.	Retail Part No.	Per Card	NPT (in)	Connection	Product Specs		Features	
						Body	Sleeve		
745	745BK	s-745	1	1/4"	Female	Heavy Duty Brass	Heavy Duty Brass	Push-Type	Drag Guard
746	746BK	s-746	1		Male	Brass	Brass		

**A-STYLE ARO "210" INTERCHANGE**

- 1/4" basic flow size
- A-Style couplers are push type for quicker connection
- 2 locking rod connection
- A-Style couplers are steel, plated to resist rust
- A-Style plugs are case hardened steel, plated to resist rust

- Maximum inlet pressure: 300 PSI
- Maximum temperature: 250°F
- Air flow: 34 SCFM
- Seals: Buna-N



**775 • 776**

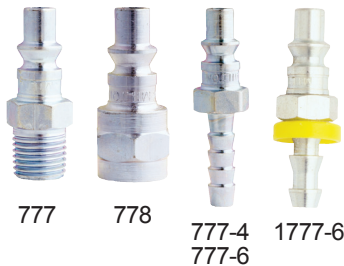


**A-Style Couplers**

Boxed Part No.	Bulk Part No.	Retail Part No.	Per Card	NPT (in)	Connection	Product Specs		
						Body	Sleeve	Feature
775	775BK	s-775	1	1/4"	Female	Case Hardened Plated Steel	Case Hardened Plated Steel	Push-Type
776	776BK	s-776	1		Male			
776-4					1/4" ID Hose Barb			
776-6					3/8" ID Hose Barb			

**A-STYLE SAFETY COUPLERS AVAILABLE ON PGS. 52 & 61**

**777 • 778 • 1777**



**A-Style Plugs**

Boxed Part No.	Bulk Part No.	Retail Part No.	Per Card	NPT (in)	Product Specs	
					Connection	Material
777	777BK	s-777	2	1/4"	Male	Case Hardened Plated Steel
778	778BK	s-778	2		Female	
777-4	777-4BK				1/4" ID Hose Barb	
777-6					3/8" ID Hose Barb	
1777-6					3/8" ID Push-on & Lock	

**s-772 • s-213 • s-775-4**



**A-Style 1/4" Coupler Kits**

Kit Part No.	Kit includes (qty):		
	#775	#777	#778
s-213	1	3	1
s-772	1	1	
s-775-4	4		



**WARNING: FOR USE WITH COMPRESSED SHOP AIR ONLY. NOT FOR BREATHABLE AIR USE**