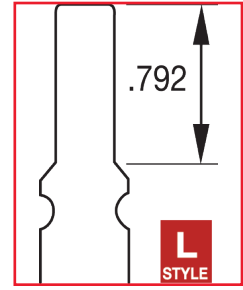


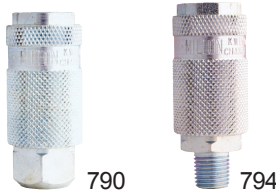
**L-STYLE LINCOLN INTERCHANGE**

- 1/4" basic flow size
- L-Style couplers are push type for quicker connection
- 3 ball bearing connection
- L-Style couplers are steel, plated to resist rust
- L-Style plugs are case hardened steel, plated to resist rust

- Maximum inlet pressure: 300 PSI
- Maximum temperature: 250°F
- Air flow: 32 SCFM
- Seals: Buna-N



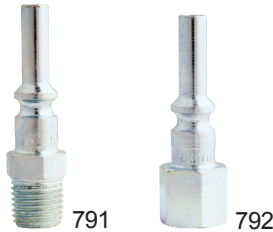
**790 • 794**



**L-Style Couplers**

Boxed Part No.	Bulk Part No.	Retail Part No.	Per Card	NPT (in)	Product Specs Connection	Body	Sleeve Release
790	790BK	s-790	1	1/4"	Female	Plated Steel	Push-Type
794		s-794	1		Male		

**791 • 792**



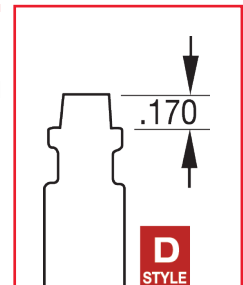
**L-Style Plugs**

Boxed Part No.	Bulk Part No.	Retail Part No.	Per Card	NPT (in)	Product Specs Connection	Material
791	791BK	s-791	2	1/4"	Male	Case Hardened Plated Steel
792	792BK	s-792	2		Female	

**D-STYLE DIAMOND-U INTERCHANGE**

- 1/4" basic flow size
- D-Style couplers are steel, plated to resist rust
- 3 ball bearing connection
- D-Style plugs are case hardened steel, plated to resist rust

- Maximum inlet pressure: 300 PSI
- Maximum temperature: 250°F
- Air flow: 34 SCFM
- Seals: Buna-N



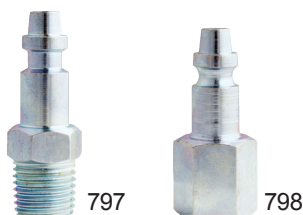
**795 • 796**



**D-Style Couplers**

Boxed Part No.	NPT (in)	Product Specs Connection	Body
795	1/4"	Female	Plated Steel
796		Male	

**797 • 798**



**D-Style Plugs**

Boxed Part No.	NPT (in)	Product Specs Connection	Material
797	1/4"	Male	Case Hardened Plated Steel
798		Female	

**WARNING:** FOR USE WITH COMPRESSED SHOP AIR ONLY. NOT FOR BREATHABLE AIR USE