

AIR COUPLERS & PLUGS

COUPLER/PLUG STYLES

- Milton® offers 11 different automotive & industrial styles
- Most styles are not interchangeable. However, couplers & plugs within the same style, from most manufacturers, will work together
- Milton®'s "Match-Up System" ensures that all couplers and plugs with the same letter code can be used together regardless of thread size
- Milton®'s 3-way couplers (page 5) simplify the process by working with A, M® & T style plugs
- Milton®'s 5 in ONE™ universal couplers (page 4) are the ultimate in versatility. They securely connect with A, M®, T, V & L style plugs
- Couplers & plugs are not D.O.T. certified

MILTON® INDUSTRIAL PLUG IDENTIFIER

<p>M-Style® Milton/Industrial Interchange</p> <p>$.211$ $\frac{1}{4}$" FLOW SIZE</p> <p>PAGE 6</p>	<p>V-Style High Flow/European Interchange</p> <p>$.185$ $\frac{1}{4}$" FLOW SIZE</p> <p>PAGE 9</p>	<p>A-Style ARO "210" Interchange</p> <p>$.325$ $\frac{1}{4}$" FLOW SIZE</p> <p>PAGE 10</p>
--	--	--

NOTE: PLUG PROFILES ARE ACTUAL SIZE

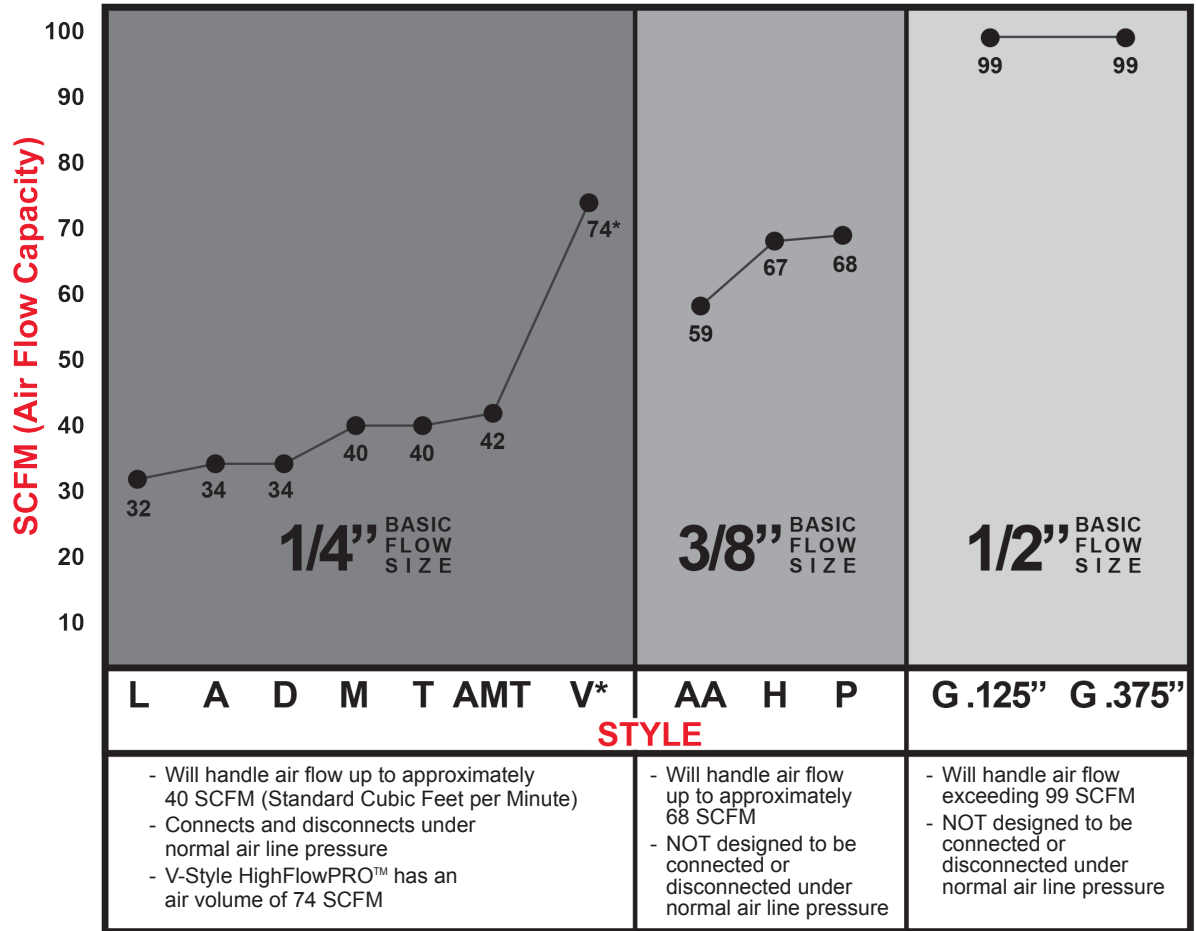
<p>T-Style Tru-flate/Parker Interchange</p> <p>$.085$ $\frac{1}{4}$" FLOW SIZE</p> <p>PAGE 11</p>	<p>L-Style Lincoln Interchange</p> <p>$.792$ $\frac{1}{4}$" FLOW SIZE</p> <p>PAGE 12</p>	<p>D-Style Diamond-U Interchange</p> <p>$.170$ $\frac{1}{4}$" FLOW SIZE</p> <p>PAGE 12</p>	<p>P-Style Tru-flate/Parker Interchange</p> <p>$.128$ $\frac{3}{8}$" FLOW SIZE</p> <p>PAGE 13</p>
<p>H-Style Milton/Industrial Interchange</p> <p>$.312$ $\frac{3}{8}$" FLOW SIZE</p> <p>PAGE 14</p>	<p>AA-Style ARO "310" Interchange</p> <p>$.589$ $\frac{3}{8}$" FLOW SIZE</p> <p>PAGE 14</p>	<p>G-Style (.125) Tru-flate/Parker Interchange</p> <p>$.125$ $\frac{1}{2}$" FLOW SIZE</p> <p>PAGE 15</p>	<p>G-Style (.375) Milton/Industrial Interchange</p> <p>$.375$ $\frac{1}{2}$" FLOW SIZE</p> <p>PAGE 15</p>

WARNING: FOR USE WITH COMPRESSED SHOP AIR ONLY. NOT FOR BREATHABLE AIR USE



AIR HANDLING CAPACITY

- Basic Flow Size defines the air flow capacity
- Please do not confuse Basic Flow Size with Thread Size
- Thread Size is not directly related to air flow capacity in any way



- Will handle air flow up to approximately 40 SCFM (Standard Cubic Feet per Minute)
- Connects and disconnects under normal air line pressure
- V-Style HighFlowPRO™ has an air volume of 74 SCFM

- Will handle air flow up to approximately 68 SCFM
- NOT designed to be connected or disconnected under normal air line pressure

- Will handle air flow exceeding 99 SCFM
- NOT designed to be connected or disconnected under normal air line pressure

*Low Pressure, High Volume

DEFINITION OF TERMS

DRAG GUARD



Protects couplers from accidental disconnection

PUSH-TYPE



Eliminates need to retract coupler sleeve to connect. Convenient and time saving option

PUSH-ON & LOCK

Push cut hose onto hose barb. Locks hose in place. Only for use with Push-on & Lock hose on page 24

RE-CAP

Recap plugs screw directly onto tire valves to allow for direct coupler connection and faster pressurization

HIGHFLOWPRO™ UP TO 75% MORE FLOW

2-pc V-Style HIGHFLOWPRO™ Hi-Flow Coupler/Plug Kit



- Max inlet pressure: 300 PSI
- Air flow: 74 SCFM

Part No.	s-216
Qty	Description
1	#760-1 Male Hi-Flow Steel Plug
1	#764 Female Hi-Flow Brass Coupler



6-pc V-Style HIGHFLOWPRO™ Hi-Flow Coupler/Plug Kit



- Max inlet pressure: 300 PSI
- Air flow: 74 SCFM

Part No.	s-217
Qty	Description
2	#760-1 Male Hi-Flow Steel Plugs
2	#761-1 Female Hi-Flow Steel Plugs
2	#764 Female Hi-Flow Brass Couplers

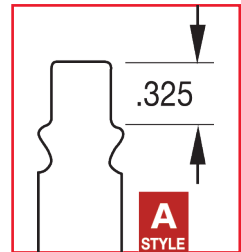


A-STYLE ARO "210" INTERCHANGE

- 1/4" basic flow size
- 2 locking rod connection
- A-Style couplers are push type for quicker connection
- A-Style couplers are steel, plated to resist rust
- A-Style plugs are case hardened steel, plated to resist rust

- Maximum inlet pressure: 300 PSI
- Maximum temperature: 250°F
- Air flow: 34 SCFM
- Seals: Buna-N

A-STYLE
ARO "210"

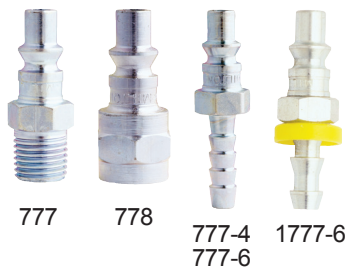


A-Style Couplers



Boxed Part No.	Bulk Part No.	Retail Part No.	Per Card	NPT (in)	Product Specs			
775	775BK	s-775	1	1/4"	Female	Case Hardened Plated Steel	Case Hardened Plated Steel	Push-Type
776	776BK	s-776	1		Male			
776-4					1/4" ID Hose Barb			
776-6					3/8" ID Hose Barb			

A-Style Plugs



Boxed Part No.	Bulk Part No.	Retail Part No.	Per Card	NPT (in)	Product Specs	
777	777BK	s-777	2	1/4"	Male	Case Hardened Plated Steel
778	778BK	s-778	2		Female	
777-4	777-4BK				1/4" ID Hose Barb	
777-6					3/8" ID Hose Barb	
1777-6					3/8" ID Push-on & Lock Hose Barb	

SEE PG. 24 FOR PUSH-ON & LOCK HOSE

A-Style 1/4" Coupler/Plug Kits



Kit Part No.	Kit includes (qty):		
	#775	#777	#778
s-213	1	3	1
s-772	1	1	
s-775-4	4		



WARNING: FOR USE WITH COMPRESSED SHOP AIR ONLY. NOT FOR BREATHABLE AIR USE