

2-1/4"



**7157**

**Locknut Socket Ford, Dodge, GM**

- Services 1993–newer Ford Ranger Bronco II and Explorer with manual hubs; 1995–96 Ford F-series 1/2-ton truck and full-size Bronco with manual hubs; 1995–newer Ford F-series 3/4-ton and 1-ton trucks with manual hubs; 1959–85 Ford F-series 1/2- and 3/4-ton trucks and full-size Bronco; 1960–90 GM 1/2-ton truck and full-size Blazer/Jimmy; 1969–89 Dodge 1/2-ton truck with manual hubs; 1969–72 International 1/2-ton truck.
- 1/2" sq. drive.
- Similar to Ford 205-192 (T83T-1197-B)

**7158**

**Locknut Socket Ford, Dodge, GM**

- Services 1985-1/2–95 Ford F-series H.D. 3/4- and 1-ton Dana 50 IFS of Dana 60 front axle; 1982–90 GM H.D. 3/4- and 1-ton trucks, 1994–newer Dodge Dana 60 with Cummins.
- 1/2" sq. drive.
- Similar to Ford 205-D065 (D85T-1197-A)



2-1/2"

**6006**

**Locknut Socket - Dodge**

- Services 1994–newer Dodge 1/2-ton 4x4 pickups with Dana 44 front axle and Dana 60 axle with vacuum disconnect front axle.
- 1/2" sq. drive.

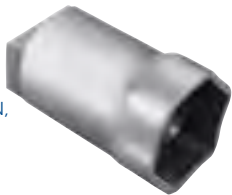


1-11/16" 43 mm

**7612**

**Locknut Socket Toyota**

- 54 mm hex socket fits front wheel bearing adjusting nut of Toyota FJ, LN, and RN. Has 1/2" square drive end, permitting use of a torque wrench.
- 1/2" sq. drive.



2-1/8" 54 mm

**7698**

**Locknut Socket Isuzu, Honda, Jeep**

- Services 1988–1995 Isuzu Trooper, Rodeo, Amigo, and pickup; 1989–1995 Honda Passport; Jeep J20 pickups with Dana 60 axle.
- 1/2" sq. drive.



2-1/4"

**7795**

**Locknut Socket Ford**

- Services 1995–1996 Ford F-series 1/2-ton trucks and full-size Bronco with automatic hubs.
- 1/2" sq. drive.
- Similar to Ford 205-348 (T95T-1197-A)



2-1/2"

**7796**

**Locknut Socket Ford**

- Services 1995–1998 Ford F-series 3/4- and 1-ton trucks with automatic hubs.
- 1/2" sq. drive.
- Similar to Ford 205-349 (T95T-1197-B)



2-3/4"

**7941**

**Locknut Socket Toyota**

- Specially designed to fit 4WD lock-out hubs on Toyota's 1995–2002 Tacoma, and 1996–2002 T100 and 4Runner.
- 1/2" sq. drive.
- Similar to Toyota 09318-12010-01.

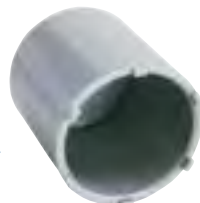


2.366 center to center on pins

**7090A**

**Locknut Socket Ford, GM**

- Services 1978–84 Ford F-series H.D. 3/4- and 1-ton 4WD trucks; 1973–81 GM 3/4- and 1-ton 4WD trucks.
- 1/2" sq. drive.
- Similar to Ford 205-D001 (D78T-1197-A)



2-5/8"



2-3/8"

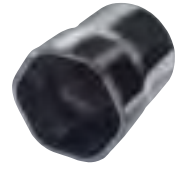
**7270A**

**Locknut Socket Ford, Dodge**

- Services 1984–92 Ford Ranger and Bronco II with manual hubs; 1986–95 Ford F-series 1/2-ton truck; full size Bronco with Dana 44 front axle; 1990–93 Dodge trucks with Dana 44 automatic hubs.
- 1/2" sq. drive.
- Similar to Ford 205-244 (T86T-1197-AR)



6612, 6921



6796, 6928

- 6612 54 mm hex locknut socket** designed for use on front wheel adjusting nuts found on Toyota FJ, LN, and RN models.
- 6921 2-1/2" hex locknut socket** its hex nut found on rear axles and various front axle applications on light-duty trucks.
- 6796 2-3/4" rounded hex locknut socket.** Works on 3/4- and 1-ton Ford F-250 and F-350 trucks with automatic locking hubs. (Ford No. T95T-1197-B & 205-349).
- 6928 2-9/16" rounded hex locknut socket.** Works on 1990–93 Dodge trucks with Dana 60 manual hubs.

**7217**

**Axle Nut Socket**

- Designed to fit the axle nut on Chevy Topkick/Kodiak, 2003 - Newer.
- Similar to J-44275.



**7218**

**Axle Hub Nut Socket**

- Removes/installs the axle hub bearing retaining nut.
- Fits GM 11-1/2" rear axle found on 2011 and newer trucks.
- 9 Pin socket, 1/2" drive.
- Similar to CH-50636.



1-11/16" 43 mm



### 6006 Locknut Socket - Dodge

- Services 1994–newer Dodge 1/2-ton 4x4 pickups with Dana 44 front axle and Dana 60 axle with vacuum disconnect front axle.

### 6601 Locknut Socket - Ford

- Services 2003–newer Ford F-250, F-350, and F-450 Super Duty trucks with 10-1/2 inch rear axle.
- 1/2" sq. drive.

Similar to Ford 205-448



2-3/4" O.D.



2-1/4"

### 7157 Locknut Socket Ford, Dodge, GM

- Services 1993–newer Ford Ranger Bronco II and Explorer with manual hubs; 1995–96 Ford F-series 1/2-ton truck and full-size Bronco with manual hubs; 1995–newer Ford F-series 3/4-ton and 1-ton trucks with manual hubs; 1959–85 Ford F-series 1/2- and 3/4-ton trucks and full-size Bronco; 1960–90 GM 1/2-ton truck and full-size Blazer/Jimmy; 1969–89 Dodge 1/2-ton truck with manual hubs; 1969–72 International 1/2-ton truck.

- 1/2" sq. drive.

Similar to Ford 205-192 (T83T-1197-B)

### 7158 Locknut Socket Ford, Dodge, GM

- Services 1985-1/2–95 Ford F-series H.D. 3/4- and 1-ton Dana 50 IFS of Dana 60 front axle; 1982–90 GM H.D. 3/4- and 1-ton trucks, 1994–newer Dodge Dana 60 with Cummins.

- 1/2" sq. drive.

Similar to Ford 205-D065 (D85T-1197-A)



2-1/2"

### 7269 Locknut Socket Ford, GM

- Services 1985–newer Ford F-series 3/4- and 1-ton trucks with Dana 80 rear axle.

- 1/2" sq. drive.

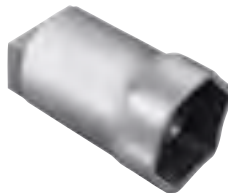
Similar to Ford 205-282 (T88T-4252-A) Kent Moore J-42855



2-3/4"

### 7612 Locknut Socket Toyota

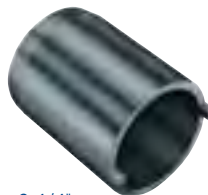
- 54 mm hex socket fits front wheel bearing adjusting nut of Toyota FJ, LN, and RN. Has 1/2" square drive end, permitting use of a torque wrench.
- 1/2" sq. drive.



2-1/8" 54 mm

### 7698 Locknut Socket Isuzu, Honda, Jeep

- Services 1988–1995 Isuzu Trooper, Rodeo, Amigo, and pickup; 1989–1995 Honda Passport; Jeep J20 pickups with Dana 60 axle.
- 1/2" sq. drive.



2-1/4"

### 7795 Locknut Socket Ford

- Services 1995–1996 Ford F-series 1/2-ton trucks and full-size Bronco with automatic hubs.

- 1/2" sq. drive.

Similar to Ford 205-348 (T95T-1197-A)



2-1/2"

### 7796 Locknut Socket Ford

- Services 1995–1998 Ford F-series 3/4- and 1-ton trucks with automatic hubs.

- 1/2" sq. drive.

Similar to Ford 205-349 (T95T-1197-B)



2-3/4"

### 7941 Locknut Socket Toyota

- Specially designed to fit 4WD lock-out hubs on Toyota's 1995–2002 Tacoma, and 1996–2002 T100 and 4Runner.

- 1/2" sq. drive.

Similar to Toyota 09318-12010-01.



2.366 center to center on pins

### 7090A Locknut Socket Ford, GM

- Services 1978–84 Ford F-series H.D. 3/4- and 1-ton 4WD trucks; 1973–81 GM 3/4- and 1-ton 4WD trucks.

- 1/2" sq. drive.

Similar to Ford 205-D001 (D78T-1197-A)



2-5/8"



2-3/8"

### 7270A Locknut Socket Ford, Dodge

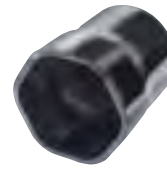
- Services 1984–92 Ford Ranger and Bronco II with manual hubs; 1986–95 Ford F-series 1/2-ton truck; full size Bronco with Dana 44 front axle; 1990–93 Dodge trucks with Dana 44 automatic hubs.

- 1/2" sq. drive.

Similar to Ford 205-244 (T86T-1197-AR)



6612, 6921



6796, 6928

- **6612** 54 mm hex locknut socket designed for use on front wheel adjusting nuts found on Toyota FJ, LN, and RN models.

- **6921** 2-1/2" hex locknut socket its hex nut found on rear axles and various front axle applications on light-duty trucks.

- **6796** 2-3/4" rounded hex locknut socket. Works on 3/4- and 1-ton Ford F-250 and F-350 trucks with automatic locking hubs. (Ford No. T95T-1197-B & 205-349).

- **6928** 2-9/16" rounded hex locknut socket. Works on 1990–93 Dodge trucks with Dana 60 manual hubs.



### 7217 Axle Nut Socket

- Designed to fit the axle nut on Chevy Topkick/Kodiak, 2003 - Newer.
- Similar to J-44275.



### 7218 Axle Hub Nut Socket

- Removes/installs the axle hub bearing retaining nut.
- Fits GM 11-1/2" rear axle found on 2011 and newer trucks.
- 9 Pin socket, 1/2" drive.
- Similar to CH-50636.