

# EVERCOAT®

**NEW &  
IMPROVED**

# rage® ULTRA

**WORLD'S BEST SANDING BODY FILLER**



## THE NEW & IMPROVED FORMULA

- Spreads smoothly and self-levels
- Virtually eliminates micro-pinholes
- Excellent vertical hang properties
- Can be applied directly to sanded OEM clearcoat
- Superior adhesion to aluminum, stainless steel, galvanized steel, SMC, fiberglass and silicon bronze welds
- Passes 500 hour salt spray testing for corrosion protection (ASTM B117)
- Eliminates the need for finishing putty
- Contains patented **ECORESIN** technology

Available in:  
1 Gallon (#100125)  
3 Gallon pail (#100127)

[evercoat.com](http://evercoat.com)





# EVERCOAT®



Watch the Video!

## RAGE® ULTRA EXPRESS REPAIR PROCESS

The following process is true for large and small repairs unless otherwise specified.



### 1: CLEAN *LIMPIAR*

Clean and degrease the body panel to be repaired.  
*Limpiar y desengrasar el panel de carrocería a reparar.*



### 2: STRAIGHTEN PANEL *ENDEREZAR EL PANEL*

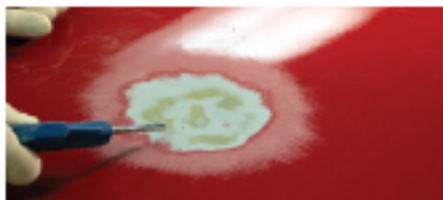
Straighten the panel to be repaired as needed.  
*Enderezar el panel a reparar, según sea necesario.*



### 3: PAINT REMOVAL *ELIMINACIÓN DE LA PINTURA*

Remove paint, only where fractured, with 80 grit in the area to be filled.  
*Eliminar la pintura, sólo donde esté fracturada, con abrasivo de grano 80 en la parte a rellenar.*

• Sand and featheredge using 180 grit for small repairs. • *Lija con grano 180 para reparaciones pequeños.*



### 4: PREPARATION *PREPARACIÓN*

Sand and featheredge the area with 180, then remove sanding dust with clean compressed air.  
*Lijar y biselar la superficie con 180, luego eliminar el polvo de lijado con aire comprimido limpio.*

• Skip to step 5 for small repairs. • *Brinca al paso 5 para reparaciones pequeños.*



### 5: APPLY RAGE® ULTRA *APLICAR LA MASILLA RAGE® ULTRA*

Apply Rage® Ultra with even, firm pressure in a thin coat, apply additional material as needed. Extend Rage® Ultra into the clearcoat featheredge area.

*Aplicar la masilla Rage® Ultra con una presión firme y uniforme en una fina capa, aplicar material adicional según sea necesario. Extender la masilla Rage® Ultra en la superficie biselada con revestimiento transparente.*



### 6: SAND & FEATHEREDGE *LIJAR Y BISELAR*

Sand the filler to shape with 80 grit, then final sand and featheredge with 180 grit.

*Lijar la masilla para dar forma con abrasivo de grano 80, luego aplicar el lijado y biselado final con abrasivo de grano 180.*

• Sand and featheredge using 180 grit for small repairs. • *Lija con grano 180 para reparaciones pequeños.*



### 7: REMOVE DUST & INSPECT *ELIMINAR EL POLVO E INSPECCIONAR*

Remove the sanding dust with clean compressed air and inspect area for coarse sand scratches, pinholes, or imperfections.

*Eliminar el polvo de lijado con aire comprimido limpio e inspeccionar la superficie para rasguños de lijado gruesos, picaduras o imperfecciones.*



### 8: APPLY 440 EXPRESS™ *APLICAR 440 EXPRESS™*






Use sponge to apply 440 Express™ over entire repair surface.

*Usar una esponja para aplicar 440 Express™ sobre toda la superficie de reparación.*

#### ▶ COMPLETE THE RAGE® ULTRA EXPRESS REPAIR PROCESS WITH 440 EXPRESS™ :

- One step primer pretreatment - no sanding required
- Reduces primer usage by up to one third
- Reduces rework by eliminating micro-pinholes
  - #100440 440 Express™ 16oz. Bottle
  - #100444 440 Express™ Kit with 4oz. Bottle and Applicators
  - #100439 440 Express™ Applicators



<p><b>Approved Substrates</b></p> 	<p>Approved substrates include: steel, stainless steel, aluminum, fiberglass, galvanized steel, SMC, sanded OEM paint and silicon bronze welds.  <b>NOTE: For structural repairs prone to high degrees of stress and flexibility, use a fiber reinforced filler such as Fiber Tech®, Everglass®, or Kitty Hair®.</b></p>										
<p><b>Preparation</b></p> 	<ul style="list-style-type: none"> <li>• Clean and degrease the entire panel to be repaired with soap and water, followed by a mild cleaning solvent. Thoroughly dry the surface before repairing.</li> <li>• Keep the repair area small. Use 80-180 grit to remove the paint and featheredge with 180. <b>NOTE: Smaller repairs on OEM Paint can be prepared with 180 grit.</b></li> </ul>										
<p><b>Mixing</b></p> 	<ul style="list-style-type: none"> <li>• Stir the filler before using. Knead the cream hardener.</li> <li>• Measure hardener 2% by weight by adding a ribbon of cream hardener from edge to edge across the center of a 4" (10 cm) diameter puddle.</li> <li>• Puddles larger than 4" (10 cm) in diameter will require additional hardener. Mix thoroughly until uniform color is achieved. <b>NOTE: ONLY USE EVERCOAT® CREAM HARDENER!*</b></li> </ul>										
<p><b>Application</b></p> 	<ul style="list-style-type: none"> <li>• Apply in layers with even firm pressure.</li> <li>• Do not apply all at once.</li> </ul>										
<p><b>Finishing</b></p> 	<ul style="list-style-type: none"> <li>• Sand body filler with 80-180 grit sandpaper.</li> <li>• If necessary, reapply Rage® Ultra to fill any pinholes or low spots, allow filler to dry and then sand with 180 grit sandpaper.</li> <li>• Finish sand body filler with 180 grit. <b>NOTE: Allow minimum of 20 minutes sanding time over silicon bronze welds. NOTE: To optimize primer performance apply 440 Express™ before applying primer surfacer.</b></li> </ul>										
<p><b>Technical</b></p>	<table border="1"> <tr> <td>Appearance</td> <td>Off-White Paste</td> </tr> <tr> <td>VOC</td> <td>Refer to Section 9 of Safety Data Sheet</td> </tr> <tr> <td>Relative Density</td> <td>Refer to Section 9 of Safety Data Sheet</td> </tr> <tr> <td>Sand Time</td> <td>15-20 mins.</td> </tr> <tr> <td>Max Recommended Thickness (sanded)</td> <td>1/4 inch (6mm)</td> </tr> </table> <p><b>NOTE: Properties are typical values and should not be considered as sales specifications. Physical testing performed @ -72°F (22°C) / 75% RH unless otherwise noted.</b></p>	Appearance	Off-White Paste	VOC	Refer to Section 9 of Safety Data Sheet	Relative Density	Refer to Section 9 of Safety Data Sheet	Sand Time	15-20 mins.	Max Recommended Thickness (sanded)	1/4 inch (6mm)
Appearance	Off-White Paste										
VOC	Refer to Section 9 of Safety Data Sheet										
Relative Density	Refer to Section 9 of Safety Data Sheet										
Sand Time	15-20 mins.										
Max Recommended Thickness (sanded)	1/4 inch (6mm)										
<p><b>Safety</b></p>	<p>Read all directions and warnings prior to using Evercoat® products. Safety Data Sheets can be found online at evercoat.com. Never return mixed filler to container. <b>NOTE: Keep can closed and store in a cool dry place. ONLY USE EVERCOAT® CREAM HARDENER!*</b></p>										



\*Evercoat® Cream Hardener can be identified by the red diamond and exclamation symbol (!) on the tube with the address: Rocket Plastics, 1505 DuPont Ave. Unit J, Ontario, CA 91761.



Rage® Ultra is part of the MetalWorks® System, a family of premium body fillers and finishing putties backed by the industry's original corrosion warranty. All MetalWorks® products have been formulated for better adhesion on all substrates eliminating featheredge peel back and allowing for a smoother finish. MetalWorks® repairs are tack free, which helps eliminate sandpaper clogging and extends the life of sandpaper. See warranty for specific details and exclusions.