



18v LXT[®] Lithium-Ion Brushless Cordless 4-1/2" Cut-Off/Angle Grinder Kit

Model XAG03M/Z

AUTOMATIC SPEED CHANGE[™] TECHNOLOGY ADJUSTS SPEED AND TORQUE DURING OPERATION FOR OPTIMUM PERFORMANCE

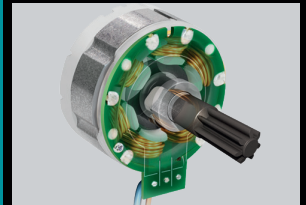
- BL[™] Brushless Motor delivers 8,500 RPM
- The BL[™] Brushless Motor eliminates carbon brushes, enabling the BL[™] Motor to run cooler and more efficiently for longer life
- Efficient BL[™] Brushless motor is electronically controlled to optimize battery energy use for up to 50% longer run time per charge
- The electronically-controlled BL[™] Brushless Motor efficiently uses energy to match torque and RPM to the changing demands of the application
- Compact and ergonomic design at only 14-1/4" long

INNOVATION



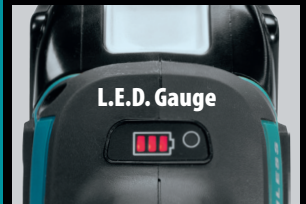
Automatic Speed Change[™] technology adjusts speed and torque during operation for optimum performance

POWER



BL[™] Motor delivers 8,500 RPM

CONVENIENCE



3-stage L.E.D. gauge indicates battery charge level

ERGONOMICS



Compact and ergonomic design at only 14-1/4" long

CORDED GRINDING PERFORMANCE

18v LXT® Lithium-Ion Brushless Cordless 4-1/2" Cut-Off/Angle Grinder Kit

Model XAG03M/Z

FEATURES & BENEFITS

- Automatic Speed Change™ technology adjusts speed and torque during operation for optimum performance
- The BL™ Brushless Motor eliminates carbon brushes, enabling the BL™ Motor to run cooler and more efficiently for longer life
- Efficient BL™ Brushless motor is electronically controlled to optimize battery energy use for up to 50% longer run time per charge
- The electronically-controlled BL™ Brushless Motor efficiently uses energy to match torque and RPM to the changing demands of the application
- Compact and ergonomic design at only 14-1/4" long
- Weighs only 5.5 lbs. with battery for reduced operator fatigue
- Rubberized soft grip provides increased comfort on the job
- 3-stage L.E.D. gauge indicates battery charge level
- Slide switch with lock-on for operator convenience
- Soft start suppresses start-up reaction for smooth start-ups and longer gear life
- Spiral bevel gears for smoother rotations and a more efficient transfer of energy
- Anti-restart protection engineered to prevent motor start up when battery is inserted with switch locked on
- Wire mesh intake covers are engineered to prevent debris from entering motor
- 3-year warranty on tool 1-year warranty on battery

SPECIFICATIONS

Grinding Wheel or Cut-Off Wheel	4-1/2"
Wire cup brush	3-1/2"
No Load Speed	8,500 RPM
Battery	18V LXT® Lithium-Ion 4.0 Ah
Overall Length	14-1/4"
Net Weight	5.5 lbs. (w/battery)
Shipping Weight	18 lbs.
UPC Code XAG03M	088381-689229
UPC Code XAG03Z	088381-684590

STANDARD EQUIPMENT

- (2) 18V LXT® Lithium-Ion 4.0 Ah Battery (BL1840)
- 18V Lithium-Ion Rapid Optimum Charger (DC18RC)
- Grinding wheel guard (123144-0)
- Grinding wheel (A95956)
- Cutting wheel guard (122910-2)
- Cutting wheel (724115-A)
- Side handle (158337-4)
- Tool Case
- XAG03Z - Tool only

All specifications subject to change without prior notice. All models and accessories subject to stock on hand.

The Makita Teal Color is the trade dress of Makita Corporation and is protected under common law and registered with the U.S. Patent and Trademark Office NTF-0914.MA4259-14



Model XAG03M



Model XAG03Z



OPTIONAL ACCESSORIES

- 18V Lithium-Ion Rapid Optimum 4-Port Charger (DC18SF)
- 18V LXT® Lithium-Ion 3.0 Ah Battery (BL1830)



Makita offers a wide variety of accessories. For a complete listing, please refer to the Makita General Catalog or visit our website at makitatools.com, or call 1-800-4MAKITA.